

**SCHIAVONE
DIAMOND**

ROYAL LePAGE
Royal LePage Real Estate
Services Ltd., Brokerage



School Information

Public

Alton Village Elementary (JK - Gr 8)
3280 Steeplechase Drive
905-332-8057

Orchard Park Elementary (Gr 1 - 8)
(French Immersion)
5151 Dryden Avenue
905-331-7233

Dr. Frank J. Hayden Secondary (Gr 9 - 11)
(French Immersion)
3040 Tim Dobbie Drive
905-332-5235

M.M. Robinson Secondary (Gr 12)
(French Immersion)
2425 Upper Middle Road
905-335-5588

Catholic

St Anne Elementary (JK - Gr 8)
4701 Doug Wright Drive
905-315-8384

St Gabriel Elementary (Gr 5 - 8)
(French Immersion)
2227 Parkway Drive
905-332-3333

Corpus Christi Secondary (Gr 9 - 12)
5150 Upper Middle Road
905-331-5591

For more information & pictures visit:
SchiavoneDiamond.com



Bill Schiavone
Broker

Tel. 905.338.6550
Cell 416.999.6084
Fax. 905.338.7452
Bill@SchiavoneDiamond.com



Steve Diamond
Sales Representative

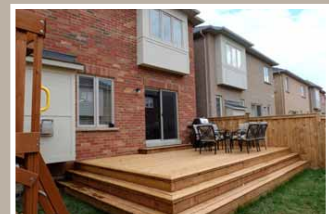
Tel. 905.338.6550
Cell 416.566.9496
Fax. 905.338.7452
Steve@SchiavoneDiamond.com

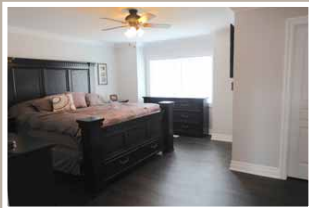
ALL information contained herein has been supplied by the Seller to the best of his knowledge and while deemed accurate is NOT guaranteed by Royal LePage Real Estate Services Ltd., Brokerage. ALL measurements are approximate.

**SCHIAVONE
DIAMOND**

ROYAL LePAGE
Royal LePage Real Estate
Services Ltd., Brokerage

Welcome to...
3352 Moses Way
\$769,000





Main Level

- Foyer**
Large foyer open to second level, double door entry with iron inserts, sidelight windows and transom, window with wide-slat blinds and side yard view, double mirrored door coat closet, ebony-stained hardwood stairs with broadloom runner, 2 contemporary crystal chandeliers
- Dining Room 12' x 13'**
Ebony-stained hardwood floor, open to great room, crown moulding, chrome light fixture, window with wide-slat blinds and side yard view
- Kitchen 11' x 10'**
Ceramic tile floor, white cabinets, granite counters, kitchen island with marble ledgerstone detail, double stainless steel sink with chrome pull-out faucet, stainless steel KitchenAid fridge, stove & built-in dishwasher, brushed stainless steel hardware, crown moulding, pendant light fixture
- Breakfast 13' x 9'**
Ceramic tile floor, charcoal ledgerstone accent wall, double glass sliding doors with vertical blinds to rear deck
- Great Room 16' x 12'**
Ebony-stained hardwood floor, gas fireplace with charcoal ledgerstone surround, crown moulding, open to kitchen and dining area, 2 windows with wide-slat blinds and rear yard views
- 2pc Bath**
Ceramic tile floor, dark wood vanity with integrated sink & counter, window with wide-slat blind and side yard view
- Laundry Room 11' x 6'**
Ceramic tile floor, front loading Whirlpool washer and dryer, dark wood upper cabinetry, laundry tub with faucet, storage closet, inside entry from garage

Second Level

- Family Room 20'7" x 12'10"**
Dark-stained hardwood floor, crown moulding, 2 windows (1 Palladium) with wide-slat blinds overlooking front yard
- Master Bedroom 15'8" x 16'**
Ebony-stained hardwood floor, walk-in closet, double mirrored door closet, crown moulding, ceiling fan, window with wide-slat blinds overlooking rear yard
- 5pc Ensuite Bath**
12 x 24 porcelain tile floor, dark wood vanity with granite counter, 2 undermount sinks and brushed stainless faucets, corner soaker tub with tile surround and skirting, glass enclosed shower with tile surround, 2 windows with wide-slat blinds overlooking rear yard
- 2nd Bedroom 12' x 10'**
Broadloom, closet, ceiling fan, window with wide-slat blind overlooking side yard
- 3rd Bedroom 10'2" x 10'1"**
Broadloom, double door closet, ceiling fan, window with wide-slat blinds overlooking side yard
- 4th Bedroom 11'3" x 10'2"**
Broadloom, closet, ceiling fan, window with wide-slat blinds overlooking side yard
- 5pc Bath**
Ceramic tile floor, dark wood vanity with granite counter, double undermount sinks with chrome faucets, deep soaker tub/shower combination with ceramic tile surround

Basement

- Recreation Room**
Professionally finished with premium broadloom, smooth ceilings, LED pot lights, storage room
- 2pc Bath**
12x24 porcelain tile floor, dark wood vanity with integrated counter and sink, chrome faucet

Exterior & Additional Features

- Additional Features**
- Entire house is smart wired for audio/video
 - New upgraded baseboards, casement trim and crown moulding throughout
 - New interior doors and oiled bronze hardware throughout
 - Professionally painted throughout (June 2014)
 - New hardwood on main and 2nd level family room, hallway and master bedroom
 - New upgraded carpet in 3 bedrooms and basement
 - New central vacuum
 - New humidifier
- Rear Yard**
- New 20 x 14 deck
 - Natural gas BBQ hook-up
 - Fully fenced yard
- Front Yard**
- Brick and stone exterior
 - Double paved driveway and double car garage
 - Tumbled stone walkway and stone steps