

SCHIAVONE
DIAMOND

ROYAL LePAGE
Royal LePage Real Estate
Services Ltd., Brokerage



School Information

Public

Post's Corners Elementary (JK - Gr 8)
2220 Caldwell Drive
905-845-1661

Sunningdale Elementary (Fr. Imm. Gr 1 - 8)
1434 Oxford Avenue
905-844-9941

White Oaks Secondary (Gr 9 - 12) (Fr. Imm.) (ESL) (LEAP) (Vocational)
1055 McCraney Street East
905-845-5200

Catholic

St. Andrew Elementary (JK - Gr 8)
145 Millbank Drive
905-257-7102

St. Matthew Elementary (Fr. Imm. Gr 5 - 8)
1050 Nottinghill Gate
905-847-0088

Holy Trinity Secondary (Gr 9 - 12) (Fr. Imm.)
2420 6th Line
905-257-3534

For more information & pictures visit:
SchiavoneDiamond.com



Bill Schiavone
Broker

Tel. 905.338.6550

Cell 416.999.6084

Fax. 905.338.7452

Bill@SchiavoneDiamond.com



Angie Schiavone
Sales Representative

Tel. 905.338.6550

Cell 416.709.9681

Fax. 905.338.7452

Angie@SchiavoneDiamond.com

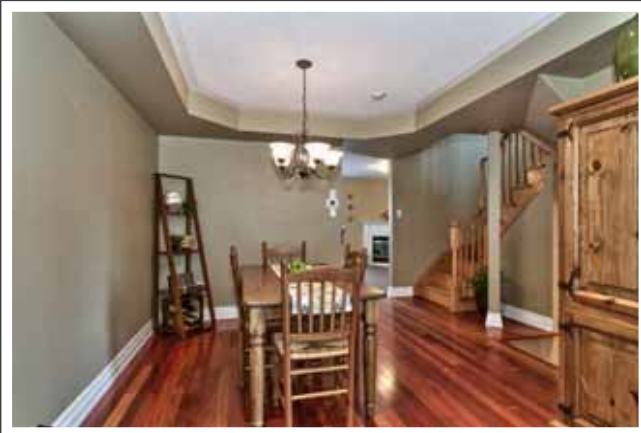
SCHIAVONE
DIAMOND

ROYAL LePAGE
Royal LePage Real Estate
Services Ltd., Brokerage

Welcome to...
210 Roxton Road



ALL information contained herein has been supplied by the Seller to the best of his knowledge and while deemed accurate is NOT guaranteed by Royal LePage Real Estate Services Ltd., Brokerage. ALL measurements are approximate.



Main Level

Entry

Ceramic tile floor, single door entry with sidelight window, coat closet, oak hardwood stairs, handrail and pickets

Living Room/Dining Room 11'10 x 13'1

Hardwood floor, coffered ceiling, pot lights, wrought iron chandelier, 3 windows with California shutters and front yard views

Kitchen 10'0 x 16'5

Ceramic tile floor, maple cabinets, laminate countertops, double stainless steel sink, chrome faucet with spray, Whirlpool Gold fridge, Kenmore smooth-top stove, built-in over-the-range microwave, built-in stainless steel Bosch dishwasher, pantry, corner gas fireplace with white mantle, French door to rear patio, window with California shutters and rear yard view

2pc Bath

Porcelain tile floor, pedestal sink, brushed stainless steel faucet and fixtures, framed mirror, upgraded light fixture

Bedroom Level

Family Room

Hardwood floor, pot lights, 4 windows with wide-slat blinds overlooking front yard

2nd Bedroom

Berber broadloom, double sliding door closet, window with blind, drapes and rod overlooking rear yard

3rd Bedroom

Berber broadloom, double sliding door closet, window with blind, drapes and rod overlooking rear yard

4pc Bath

Ceramic tile floor, white vanity with porcelain sink, brushed stainless steel faucet, tub/shower combination with ceramic tile surround, built-in medicine cabinet

Laundry

Ceramic tile floor, shelving

Third Level

Master Bedroom

Berber broadloom, large walk-in closet, crystal and drum light fixture, 2 windows with silhouette blinds, drapes and rods overlooking rear yard

4pc Ensuite Bath

Ceramic tile floor, white vanity with laminate counter, chrome faucet and fixtures, large soaker tub with ceramic tile surround, separate shower with ceramic tile surround, display niche, window with wide-slat blinds overlooking rear yard

Basement

Recreation Room

Berber broadloom, pot lights, storage closet, utility room with storage

Exterior & Additional Features

Features

- 2nd floor linen closet
- Alarm system
- Central vacuum + Attachments
- New central air conditioner
- New humidifier on furnace

Rear Yard

Stone patio, garden beds with perennials and trees, fully fenced, access to 2 car garage, backs onto parkette/green space

Front Yard

Stone steps, porch with railings, garden beds with perennials and shrubs