

SCHIAVONE
DIAMOND

ROYAL LePAGE
Royal LePage Real Estate
Services Ltd., Brokerage



School Information

Catholic

St. Basil Elementary (K1 - Gr 8)
905-624-4529
Divine Mercy (Fr. Imm. Gr 1 - 4)
905-812-5445
St. Elizabeth Seton (Fr. Imm. Gr 1 - 4)
905-821-2277
St. Gertrude (Fr. Imm. Gr 1 - 7)
905-568-7660
St. Margaret of Scotland (Fr. Imm. Gr 1 - 8)
905-820-5115
St. Pio of Pietrelcina (Fr. Imm. Gr 1 - 4)
905-361-1327
Philip Pocock Secondary (Gr 9 - 12) (Ext. Fr.) 905-602-6172

Public

Janet McDougald Elementary (JK - Gr 5)
905-278-2477
Glenhaven Senior (Gr 6 - 8)
905-625-5250
Burnhamthorpe Elementary (Fr. Imm. Gr 1 - 5)
905-625-0140
Tomken Road Middle (Fr. Imm. Gr 6 - 8)
905-277-0321
Glenforest Secondary (Gr 9 - 12)
905-625-7731
Applewood Heights Secondary (Fr. Imm. Gr 9 - 12)
905-279-6090

Lot Size: 39.37' x 101.71'
2016 Taxes: \$2,430

For more information & pictures visit:
SchiavoneDiamond.com



Bill Schiavone

Broker

Tel 905.338.3737

Cell 416.999.6084

Fax. 905.338.7452

Bill@SchiavoneDiamond.com



Jo-Anne Copeland

Sales Representative

Tel 905.338.3737

Cell 905.301.6677

Fax. 905.338.7452

Jo-Anne@SchiavoneDiamond.com

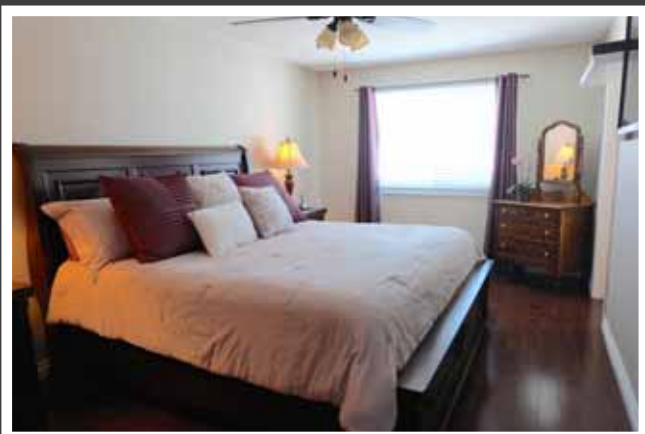
SCHIAVONE
DIAMOND

ROYAL LePAGE
Royal LePage Real Estate
Services Ltd., Brokerage

Welcome to...
4154 Rockwood Road



ALL information contained herein has been supplied by the Seller to the best of his knowledge and while deemed accurate is NOT guaranteed by Royal LePage Real Estate Services Ltd., Brokerage. ALL measurements are approximate.



Main Level

Entry

Single door entry with sidelight window, 12 x 24 porcelain tile floor, coat closet, dark stained hardwood stairs with broadloom runner

Dining Room 10'6 x 13'7

Dark stained hardwood floor, 5 light chandelier, large window with drapes & rod and front yard view

Kitchen 20'6 x 10'10

Gourmet kitchen by D.V. Kitchens, dark stained hardwood floor, espresso cabinets with pot drawers and pantry cupboards, upper valance trim, under cabinet lighting, centre island with breakfast bar, granite counters, double stainless steel undermounted sink, brushed stainless steel pull-out faucet, tumbled stone tile backsplash, Kenmore Elite stainless steel fridge, Kenmore Elite built in wall oven and convection/microwave oven, Kenmore Elite smooth top induction cooktop, Kenmore Elite stainless steel built-in dishwasher, KitchenAid stainless steel range hood/fan, pot lights, large window with wide slat blinds and rear yard view

Breakfast 10'3 x 7'8

Dark stained hardwood floor, 5 light brushed stainless steel chandelier, 2 windows with wide slat blinds, new sliding glass doors to rear deck

Family Room 15'11 x 10'6

Dark stained hardwood floor, wood burning fireplace with tile surround, pot lights, window with wide slat blinds, drapes & rod and rear yard view

2pc Bath

12x24 porcelain tile floor, dark wood vanity, granite counter, undermounted sink, brushed stainless steel faucet, dual flush toilet, framed mirror, updated light fixture

Laundry Room

12x24 porcelain tile floor, inside entry from garage, separate entrance from side yard, LG front loading washer and dryer, laundry sink with faucet, upper cabinets

Bedroom Level

Master Bedroom 18'4 x 10'0

Dark stained hardwood floor, walk-in closet with organizers, French door leads to office/library niche overlooking foyer, ceiling fan, window with wide slat blinds, drapes and rod overlooking front yard

3pc Ensuite Bath

Newly renovated with porcelain tile floor, espresso vanity with granite counter, undermounted sink, chrome faucet and fixtures, dual flush toilet, glass shower with built-in shampoo shelf and tile surround, Riobel rainfall shower head and hand-held spray, glass display shelves, pot lights, 3 light chrome & glass light fixture, frosted window overlooking rear yard

2nd Bedroom 9'11 x 12'1

Dark stained hardwood floor, closet, window with wide slat blinds, drapes and rod overlooking rear yard

3rd Bedroom 11'2 x 12'3

Dark stained hardwood floor, closet, window with side slat blinds, drapes and rod overlooking front yard

4pc Bath

Newly renovated with 12 x 24 porcelain tile floor, espresso vanity with vessel sink, chrome faucet and fixtures, framed mirror, 3 light chrome & glass light fixture, dual flush toilet, tub/shower combination with 12x24 tile surround, frosted window overlooking rear yard

Basement

New laminate flooring, 2 large recreation areas, recessed lighting, storage room, large cold room, utility room with laundry sink & faucet

3pc Bath

Tile floor, vanity and sink, shower with tile surround

Exterior & Additional Features

- Tumbled stone interlock walkways and front porch, double car garage, paved double drive (new asphalt 2015)
- Fully fenced rear yard with pergola covered wood deck, garden shed
- New dark stained hickory wood floors throughout main and upper level
- Upper floor linen closet
- Updates include: roof (2002), furnace & A/C 2014, windows and patio doors 2009, new garage doors & opener 2014