



School Information

Public

Montclair Elementary (JK - Gr 8)
1285 Montclair Drive
905-845-9590

Sunningdale Elementary (Fr. Imm. Gr 2 - 8)
1434 Oxford Avenue
905-844-9941

White Oaks Secondary (Gr 9 - 12) (Fr. Imm.)
1330 Montclair Drive
905-845-5200

Catholic

St. Michael Elementary (JK - Gr 8)
165 Sewell Drive
905-844-6811

St. Bernadette Elementary (Fr. Imm. Gr 5 - 8)
1201 Heritage Way
905-827-7235

Holy Trinity Secondary (Gr 9 - 12) (Fr. Imm.)
2420 Sixth Line
905-257-3534

2018 Taxes: \$2,317

For more information & pictures visit:
SchiavoneDiamond.com



Bill Schiavone
Broker

Tel 905.338.3737

Cell 416.999.6084

Fax 905.338.7351

Bill@SchiavoneDiamond.com



Steve Diamond
Sales Representative

Tel 905.338.3737

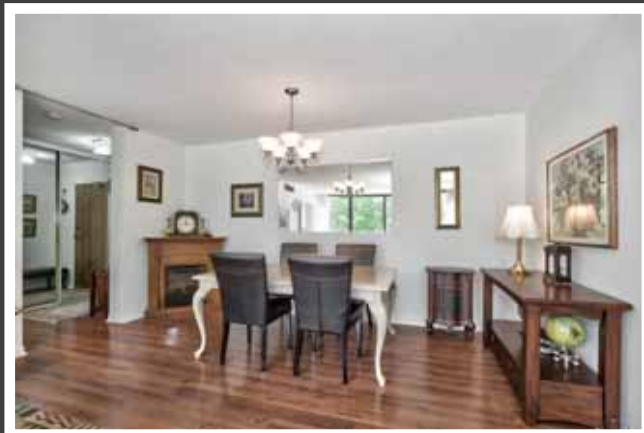
Cell 416.566.9496

Fax 905.338.7351

Steve@SchiavoneDiamond.com

Welcome to...
#208-1240 Marlborough Court





Main Level

Entry

Wood-look laminate floor, double mirrored door coat closet

Living Room 20'8 x 9'11

Wood-look laminate floor, sliding glass doors to sunroom, large windows with vertical blinds and forest views overlooking ravine

Dining Room 16'11 x 10'3

Wood-look laminate floor, 5-light chandelier

Kitchen 14'11 x 12'2

Renovated kitchen with linoleum tile-look flooring, espresso cabinets with brushed stainless steel hardware, laminate counters, white single sink with matte black faucet, glass mosaic tile backsplash, GE stainless steel fridge, GE stainless steel smooth-top stove, Samsung stainless steel built-in dishwasher, ceiling fan, sink window overlooking forest, breakfast area open to sunroom

Sunroom 9'9 x 8'4

New tile-look linoleum floor, floor to ceiling windows with vertical blinds and forest views overlooking the ravine

3pc Bath

New tile-look laminate floor, white vanity with laminate counter, chrome faucet and fixtures, corner shower with tile surround and pebbled glass door, Toto toilet

Master Bedroom 15'8 x 10'9

New wool carpeting and underpad, walk-in closet with shelving, vanity area with laminate counter and large mirror, large window with vertical blinds and forest views overlooking ravine

4pc Ensuite Bath

New linoleum tile-look floor, white vanity with laminate counter, chrome faucet and fixtures, framed mirror, tub/shower combination, Toto toilet

2nd Bedroom 13'4 x 10'5

Berber broadloom, double door closet, linen closet, double doors open to living area and can be used as a study/office, large window with vertical blinds with forest views overlooking ravine

Laundry/Utility

Tile floor, stacked Maytag washer and dryer, shelving

Exterior & Additional Features

- Spectacular forest views from every window
- Update kitchen cabinets, counters, sink, faucet, backsplash and stainless steel appliances
- 7 new windows installed, new screens, ledges sealed and painted
- New blinds in bedrooms
- Professionally painted
- Shower and bathtub faucets replaced
- Amenities include indoor pool, exercise room, games room, party room, security guard, visitor parking