

# 281 Trafalgar Road

Oakville, Ontario



SCHIAVONE  
DIAMOND

**ROYAL LEPAGE**  
Royal LePage Real Estate Services Ltd., Brokerage





# Welcome Home





# Gourmet Kitchen







# Luxurious Living





# Master Suite







# Great for Entertaining





Features

281 Trafalgar Road

MAIN LEVEL

**Entry** **10'4 x 5'5**  
Single door entry with sidelight & transom windows, Carrera marble tile floor with inlay, crown moulding, pot lights, crystal chandelier, double door coat closet, broom closet, dark-stained hardwood stairs with white risers & balusters

**Living Room** **19'1 x 13'7**  
Hardwood floor, gas fireplace with French cast stone mantle & marble hearth, crown moulding, pot lights, 3 windows with front & side yard views

**Dining Room** **22'3 x 13'7**  
Hardwood floor, gas fireplace with French cast stone mantle & marble hearth, crown moulding, pot lights, wall sconces, 9-light iron chandelier, 4 windows with front & side yard views

**Kitchen** **21'7 x 18'3**  
Limestone tile floors, antiqued cream custom cabinetry with upper and lower valance, under-cabinet lighting, textured marble counters and backsplash, centre island with breakfast bar, double stainless steel undermounted sink & chrome pull-out faucet, single stainless steel undermounted bar sink with chrome faucet, SubZero integrated fridge, Bosch 5 burner gas cooktop, pot filler faucet, Bosch built-in stainless steel double wall ovens, integrated built-in dishwasher, Marvel stainless steel beverage fridge, crown moulding, pot lights, 4 pendant lights above island, spacious breakfast area with 6-light oiled bronze chandelier, 2 sets of French garden doors to rear patio

**Family Room** **16'9 x 16'4**  
Hardwood floor, gas fireplace with marble surround and cast stone mantle, crown moulding, pot lights, 2 windows with side yard views, 2 sets of French doors with drapes & rods to rear patio

**2pc Powder Room**  
Limestone tile floor, carved wood vanity with marble counter and antique brass scalloped sink & faucet, oiled bronze fixtures, framed mirror, Kohler toilet, 4-light chandelier, crown moulding, pot lights, window with side yard view

**Mud Room**  
Limestone tile floor, entry from front driveway, double door closet, crown moulding, pot lights

**Laundry Room** **15'4 x 7'2**  
Limestone tile floor, antiqued upper cabinets, laundry sink with faucet, front loading LG washer and dryer with pedestals, entry from rear driveway & yard

**2pc Bath**  
Limestone tile floor, crown moulding, Kohler pedestal sink & toilet, chrome faucet, oiled bronze fixtures, oiled bronze coach lantern

BEDROOM LEVEL

**Master Bedroom** **21'8 x 18'2**  
Double door entry, hardwood floor, large walk-in closet, gas fireplace with wood mantle, crown moulding, pot lights, 2 windows with drapes and rods overlooking rear yard

**5pc Ensuite Bath**  
Limestone tile floors, carved wood vanity with marble counter, double brass sinks & faucets, framed mirrors, separate glass shower with marble slab surround & rainfall shower head, jetted soaker tub with marble tile surround, crown moulding, sconce lights, pot lights, water closet with Kohler toilet, 2 windows overlooking front & side yards

**2nd Bedroom** **16'9 x 16'4**  
Hardwood floor, double door closet with lighting, crown moulding, pot lights, 3 windows overlooking rear & side yards

**3pc Ensuite Bath**  
Limestone tile floor, Kohler pedestal sink & toilet, chrome faucet & fixtures, separate shower with tile surround, window overlooking side yard

**3rd Bedroom** **19'5 x 13'9**  
Hardwood floor, double door closet with lighting, crown moulding, chandelier, pot lights, 4 windows overlooking front & side yards

**3pc Ensuite Bath**  
Limestone tile floor, Kohler pedestal sink & toilet, chrome faucet & fixtures, separate shower with tile surround

**4th Bedroom** **16'11 x 13'10**  
Hardwood floor, double door closet with lighting, pot lights, chandelier, crown moulding, 3 windows overlooking front & side yards

**4pc Ensuite Bath**  
Limestone tile floor, Kohler pedestal sink & toilet, chrome faucet & fixtures, tub/shower combination with tile surround

**Office/Study** **10'4 x 8'9**  
French door entry, hardwood floor, crown moulding, coach lantern, pot lights, window with drapes & rod overlooking front yard

BASEMENT LEVEL

**Recreation Room** **16'6 x 15'11**  
Berber broadloom, gas fireplace with white mantle, pot lights, 2 above-grade windows

**Play Room** **21'3 x 17'10**  
Berber broadloom, pot lights, adjacent toy area (14'11 x 7'0)

**5th Bedroom** **19'5 x 13'2**  
Berber broadloom, 2 double door closets, 2 above-grade windows

**6th Bedroom** **16'1 x 13'8**  
Berber broadloom, walk-in closet, 2 above-grade windows

**4pc Bath**  
Marble tile floor, casement-style wood vanity with marble counter, undermount sink, chrome faucet & fixtures, Kohler toilet, jetted soaker tub with tile surround & shower, pot lights

**Utility Room** **21'1 x 7'5**

**Storage Room** **7'6 x 7'3**

**Cold Room** **11'2 x 5'3**



# Additional Information

## EXTERIOR & ADDITIONAL FEATURES

Classic Georgian style exterior with Flemish bond brickwork, functioning shutters, covered porch with double columns, professionally landscaped with foundation plants and perennials, double driveway fits multiple vehicles

Detached garage at rear yard has a 555 square foot loft space above with staircase access, concrete patio surrounded by foundation plants & perennials, mature trees, sprinkler system, landscape lighting

- 10 ft ceilings throughout
- Dark-stained hardwood floors throughout
- Central vacuum
- Cat-5 wiring

**Lot Size:** 68' x 214'

**2019 Taxes:** \$18,256

## SCHOOL INFORMATION

**Public**  
**New Central Elementary (JK - Gr 6)**  
133 Balsam Drive 905-844-3081

**Maple Grove Elementary (Gr 7 - 8)**  
288 Maple Grove Drive 905-844-9322

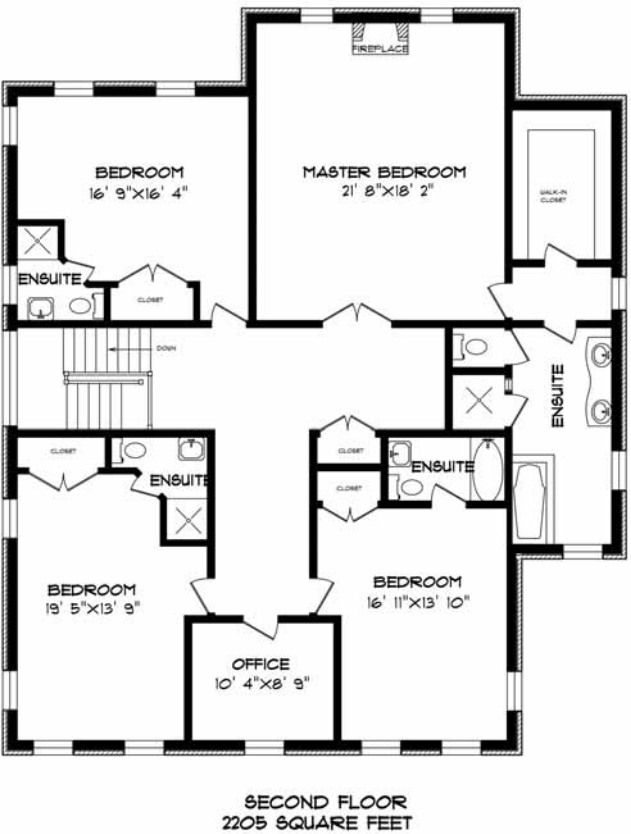
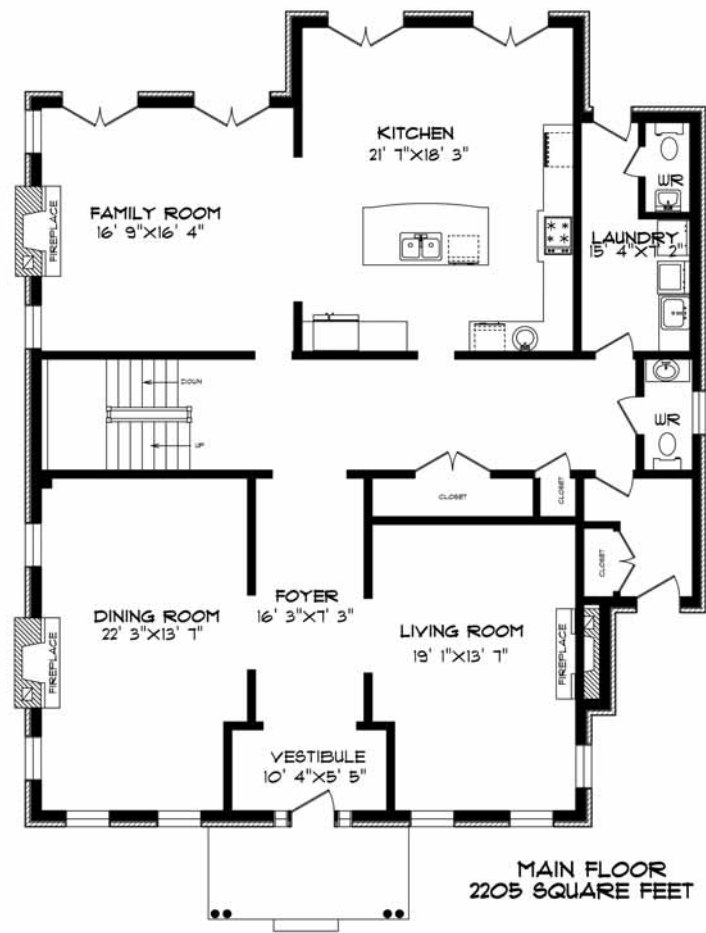
**E. J. James Elementary (Fr. Imm. Gr 2 - 8)**  
338 Cairncroft Road 905-845-2015

**Oakville Trafalgar Secondary (Gr. 9 - 12) (Fr. Imm.)**  
1460 Devon Road 905-845-2875

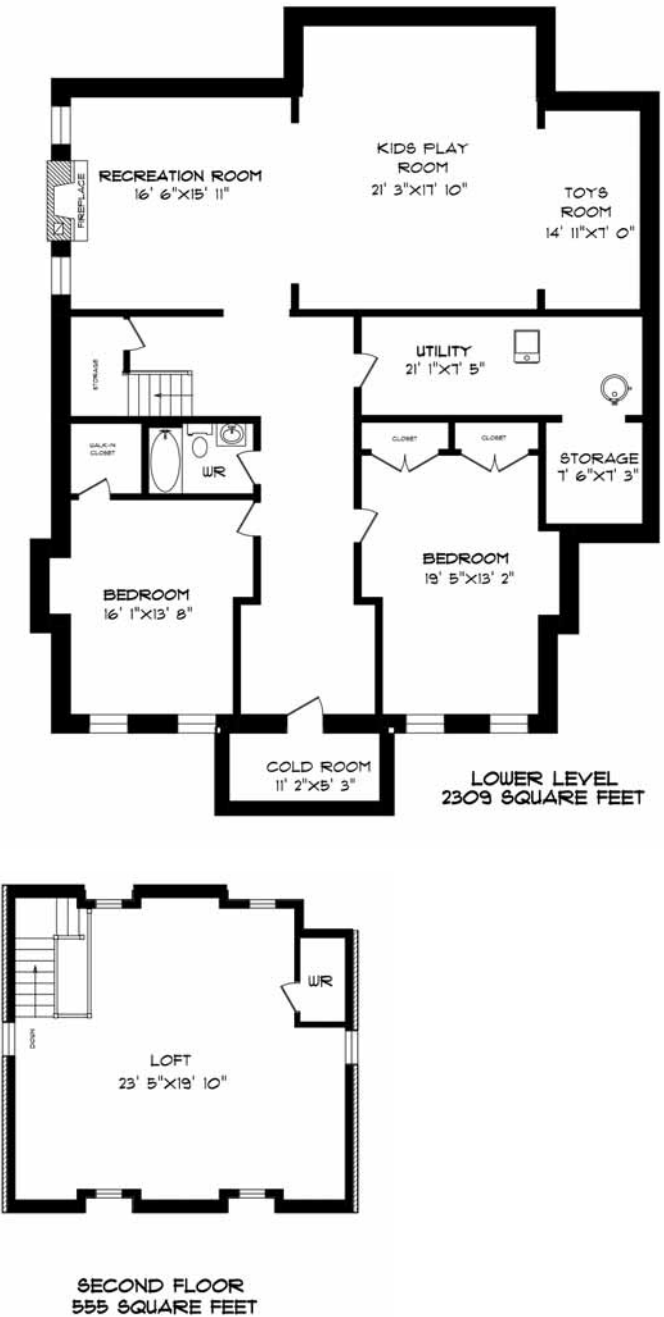
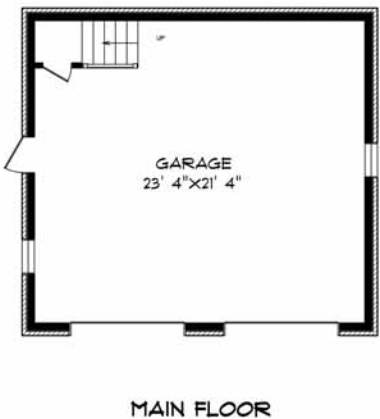
**Catholic**  
**St. Vincent Elementary (JK - Gr 8)**  
1280 Braeside Drive 905-849-0777

**St. Nicholas Elementary (Fr. Imm. Gr 5 - 8)**  
477 Warminster Drive 905-827-4231

**St. Thomas Aquinas Secondary (Gr 9 - 12) (Fr. Imm.)**  
124 Dorval Drive 905-842-9494



## Garage Floor Plans





# Backyard Retreat







For more information & pictures visit:  
**SchiavoneDiamond.com**



**Bill Schiavone**

Broker

**Tel 905.338.3737**

Cell 416.999.6084

Fax 905.338.7351

Bill@SchiavoneDiamond.com



**Steve Diamond**

Sales Representative

**Tel 905.338.3737**

Cell 416.566.9496

Fax 905.338.7351

Steve@SchiavoneDiamond.com