

SCHIAVONE DIAMOND

ROYAL LePAGE
Royal LePage Real Estate
Services Ltd., Brokerage



School Information

Public

Gladys Speers Elementary (JK - Gr 6)
2150 Samway Road 905-827-4841

Eastview Elementary (Gr 7 - 8)
2266 Hixon Street 905-827-1541

Pine Grove Elementary (Fr. Imm. Gr 2-8)
529 Fourth Line 905-844-6371

**Thomas A. Blakelock Secondary (Gr 9 - 12)
(Fr. Imm.)**
1160 Rebecca Street 905-827-1158

Catholic

St. Dominic Elementary (JK - Gr 8)
2405 Rebecca Street 905-827-4401

St. Nicholas Elementary (Fr. Imm. Gr 5 - 8)
477 Warminster Drive 905-827-4231

**St. Thomas Aquinas Secondary (Gr 9 - 12)
(Fr. Imm.)**
124 Dorval Drive 905-842-9494

2020 Taxes: \$6,006

For more information & pictures visit:
SchiavoneDiamond.com



Bill Schiavone

Broker

Tel 905.338.3737

Cell 416.999.6084

Fax 905.338.7351

Bill@SchiavoneDiamond.com



Fabe Fedrigo

Sales Representative

Tel 905.338.3737

Cell 905.302.5718

Fax 905.338.7351

Fabe@SchiavoneDiamond.com

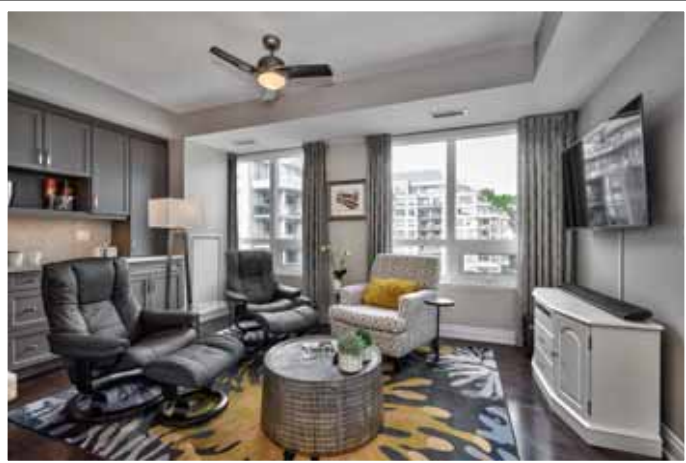
ALL information contained herein has been supplied by the Seller to the best of his knowledge and while deemed accurate is NOT guaranteed by Royal LePage Real Estate Services Ltd., Brokerage. ALL measurements are approximate.

SCHIAVONE DIAMOND

ROYAL LePAGE
Royal LePage Real Estate
Services Ltd., Brokerage

Welcome to...
#427-3500 Lakeshore Road West





Main Level

Entry

Hardwood floor, double door coat closet

Living Room 18'6 x 11'0

Hardwood floor, large window with custom blinds and lake view

Dining Room 10'3 x 10'0

Hardwood floor, chrome and glass chandelier, floor-to-ceiling windows with custom blinds and walk-out to balcony with lake views, natural gas bbq hookup with gas bbq included

Kitchen 13'9 x 7'3

Hardwood floor, white cabinets, under-cabinet lighting, glass tile backsplash, quartz counters, breakfast bar, oversized single stainless steel undermounted sink, brushed stainless steel pull-out faucet, built-in gas cooktop, built-in stainless steel wall oven and warming drawer, built-in stainless steel microwave, integrated built-in dishwasher, integrated fridge, stainless steel built-in beverage fridge, 3 pendant lights, pot lights

Family Room 16'0 x 11'3

Hardwood floor, custom built-in grey cabinetry coffee bar, ceiling fan, 2 windows with custom blinds

2pc Bath

Tile floor, pedestal sink, chrome faucet and fixtures, framed mirror

Master Bedroom 15'0 x 11'0

Hardwood floor, walk-in closet with custom organizers, windows with custom blinds and walk-out to private balcony with lake view, ceiling fan, pot lights

5pc Ensuite Bath

Tile floor, dark wood vanity, marble counter, double undermounted sinks, chrome faucets and fixtures, framed mirrors, deep soaker tub with marble decking and tile surround, storage cabinet, separate glass shower with tile surround

2nd Bedroom 12'6 x 10'0

Hardwood floor, large double door closet with custom organizers, ceiling fan, large window with custom blind

4pc Ensuite Bath

Tile floor, dark wood vanity with marble counter and undermounted sink, chrome faucet and fixtures, tub/shower combination with tile surround and glass partition

Laundry

Tile floor, stacked front loading washer and dryer, upper cabinets, laundry sink and faucet

Features

- Beautifully appointed corner 2 bedroom unit with fabulous South East lake views
- 2 full ensuite baths + 2 piece powder room
- Upgraded light fixtures
- In-suite laundry
- 2 owned underground parking spaces
- 1 owned storage locker

Building Amenities

- Indoor hot tub, steam room and sauna
- Gym and exercise area
- Outdoor gazebo and patio with bbq area
- Path along the waterfront
- Outdoor swimming pool
- Guest Suites
- Underground visitor parking
- Concierge and security guard