

2150 Elmhurst Avenue

Oakville, Ontario



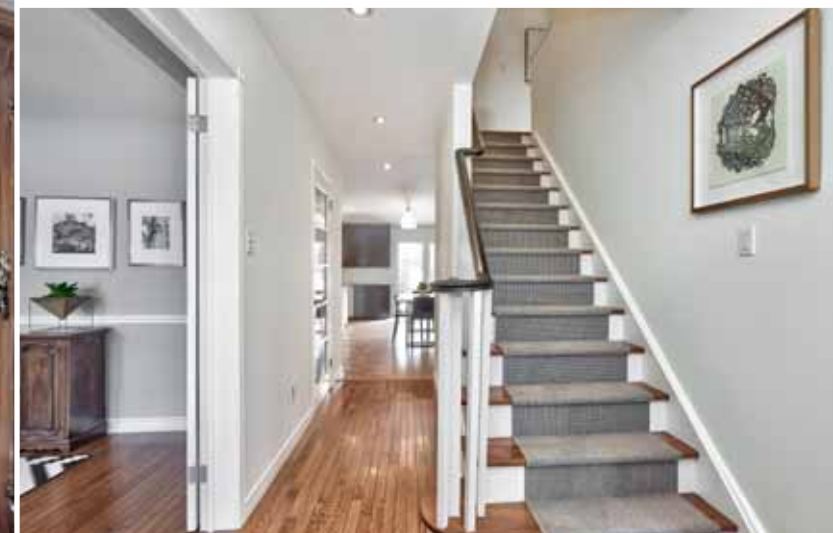
SCHIAVONE
DIAMOND

ROYAL LEPAGE
Royal LePage Real Estate Services Ltd., Brokerage





Welcome
Home





Gourmet Kitchen



Luxurious Living



Master Suite







Features

2150 Elmhurst Avenue

MAIN LEVEL

Entry
Solid wood single door entry with sidelights, hardwood floor, coat closet, hardwood stairs with white pickets & risers and broadloom runner, pot lights

Dining Room 15’11 x 12’7
Double French door entry, hardwood floor, tray ceiling, orb chandelier, pot lights, large window with custom roman blinds and front yard view

Office 12’1 x 12’0
Double French door entry, hardwood floor, large window with custom roman blinds and front yard view

Kitchen 19’3 x 12’5
Cork floor, espresso shaker-style cabinetry with pot drawers, stainless steel bar hardware, open shelving, garbage & recycling pull-outs and wine storage, granite counters, oversized subway tile backsplash, large centre island with quartz counter, built-in Panasonic microwave and KitchenAid stainless steel built-in oven, KitchenAid stainless steel side-by-side Fridge, Miele stainless steel built-in dishwasher, KitchenAid gas 5 burner cooktop, Faber stainless steel hood vent, oversized undermounted single stainless steel sink with garburator, Hans Grohe brushed stainless steel faucet & soap dispenser, stainless steel undermounted bar sink with Franke brushed stainless steel faucet, walk-in pantry with second full-size fridge, open shelving and window overlooking side yard, magazine/cookbook display rack, glass pendant over island, pot lights, sink window with rear yard view

Breakfast Area 21’1 x 7’1
Cork floor, 3 pendant lights, pot lights, glass patio doors to rear patio

Living Room 20’0 x 13’9
Cork floor, pot lights, window with custom roman blind and rear yard view

Family Room 19’1 x 12’0
Sunken family room with vinyl plank floor, remote-controlled linear gas fireplace with fan on tiled feature wall, vaulted ceiling, display niche, wall-to-wall windows, drum light pendant, door to rear yard

2pc Bath
Tile floor, glass vanity with glass vessel sink, wall-mounted chrome faucet, tile backsplash, Toto toilet, painted brick accent wall

Mudroom/Laundry 11’11 x 11’2
Tile floor, storage cabinets, upper cabinets, laundry sink with pull-out faucet, stacked Maytag Maxima front-loading washer and dryer, painted brick accent wall, keyless side door entrance, inside entry from garage, pot lights

BEDROOM LEVEL

Master Bedroom 22’1 x 19’3
Berber broadloom, corner gas fireplace with stone surround, walk-in closet with custom built-ins, separate office (12’8 x 8’0) (currently used as office space but can be used as nursery or converted to second walk-in closet), ceiling fan, pot lights, window with custom shade overlooking rear yard, window with custom silhouette blind, drapes and rod overlooking rear yard

5pc Ensuite Bath
Heated tile floor with decorative inlay design, espresso vanities with 2 vessel sinks, wall-mounted brushed stainless steel faucets, tile backsplash and granite counters, mirrored upper cabinets with door activated cabinet lighting, jetted soaker tub with tile surround, separate large glass shower with tile surround, shampoo shelves and bench seat, Toto toilet, pot lights, window with custom silhouette shade overlooking side yard, large bay window with custom silhouette shades overlooking front yard

2nd Bedroom 16’2 x 13’10
Broadloom, 2 closets, ceiling fan, window with custom roman blind, drapes & rod overlooking front yard

3pc Ensuite Bath
24x24 tile floor, grey floating vanity with integrated sink & counter, chrome faucet and fixtures, glass display shelves, glass shower with tile surround and linear floor drain, window with custom shade overlooking front yard

3rd Bedroom 12’10 x 11’8
Berber broadloom, closet, drum light fixture, window with drapes & rod overlooking rear yard

4th Bedroom 13’10 x 12’11
Broadloom, closet, 2nd closet (converted to study area), window with custom roman blind, drapes & rod overlooking front yard

5pc Bath
Stone tile floor, grey vanity with quartz counter and double undermounted sinks, chrome faucets & fixtures, framed mirror, tub/shower combination with glass doors, window with shutters overlooking rear yard

BASEMENT LEVEL

Recreation Room 26’ x 18’7
Berber broadloom, gas fireplace, pot lights, windows with shades

Office/Study Area 9’1 x 7’3
Berber broadloom, window with shade

3pc Bath
Tile floor, wood vanity with laminate counter, chrome faucet & fixtures, glass shower with tile surround, pot lights

Gym/Exercise Area 11’11 x 11’9
Berber broadloom

Utility/Storage Room 32’1 x 23’2
Workshop area, storage space, access to crawl space

Cold Cellar

Features

Floor Plans

EXTERIOR & ADDITIONAL FEATURES

Fabulous curb appeal with stucco and stone exterior, double driveway, double car garage with red cedar tongue & groove B&M garage door, square-cut flagstone porch with interlock tumbled stone walkway, wood soffits, copper plated overhang above entrance and garage, coach-style lantern, copper garage lanterns, driveway parking for up to 5 cars, professionally landscaped with mature trees and perennials

Backyard entertainer's delight with multi-level concrete patio, outdoor change area and bench storage, contemporary wire railings, armour stone accents, Jamieson salt-water in-ground solar heated pool with 2 deck jets and dual skimmers, concrete decking, feature wall, 10x10 Royal outdoor shed for pool gear, 8x20 Royal outdoor shed at side of house, natural gas BBQ hookup, professionally landscaped with mature trees and perennials

- Garage drywalled, storage cabinets & epoxy sealed floor
- HE Furnace (2002) (heat exchange burner 2014)
- Baseboard heaters in some bedrooms for back up heat
- 3.5 ton Lennox A/C (2015)
- Owned HWT
- Central Vacuum
- Sprinkler system with timer and rain sensor
- Roof, soffits and eavestroughs (2004)
- Upper hallway has hardwood floor, pot lights and linen closet

SCHOOL INFORMATION

Public
Maple Grove Elementary (JK - Gr 8)
288 Maple Grove Drive 905-844-9322

E.J. James Elementary (Fr. Imm. Gr 2 - 8)
338 Cairncroft Road 905-845-2015

Oakville Trafalgar Secondary (Gr 9 - 12) (Fr. Imm.)
1460 Devon Road 905-845-2875

Catholic
St. Vincent Elementary (JK - Gr 8)
1280 Braeside Drive 905-849-0777

St. Nicholas Elementary (Fr. Imm. Gr 5 - 8)
47 Warminster Drive 905-827-4231

St. Thomas Aquinas Secondary (Gr 9 - 12) (Fr. Imm.)
124 Dorval Drive 905-842-9494

Lot Size:

- 90' x 133.64'

2020 Taxes:

- \$11,963



Floor plans may not be exactly as shown.

Backyard Retreat







For more information & pictures visit:
SchiavoneDiamond.com



Bill Schiavone

Broker

Tel 905.338.3737

Cell 416.999.6084

Fax 905.338.7351

Bill@SchiavoneDiamond.com



Steve Diamond

Sales Representative

Tel 905.338.3737

Cell 416.566.9496

Fax 905.338.7351

Steve@SchiavoneDiamond.com