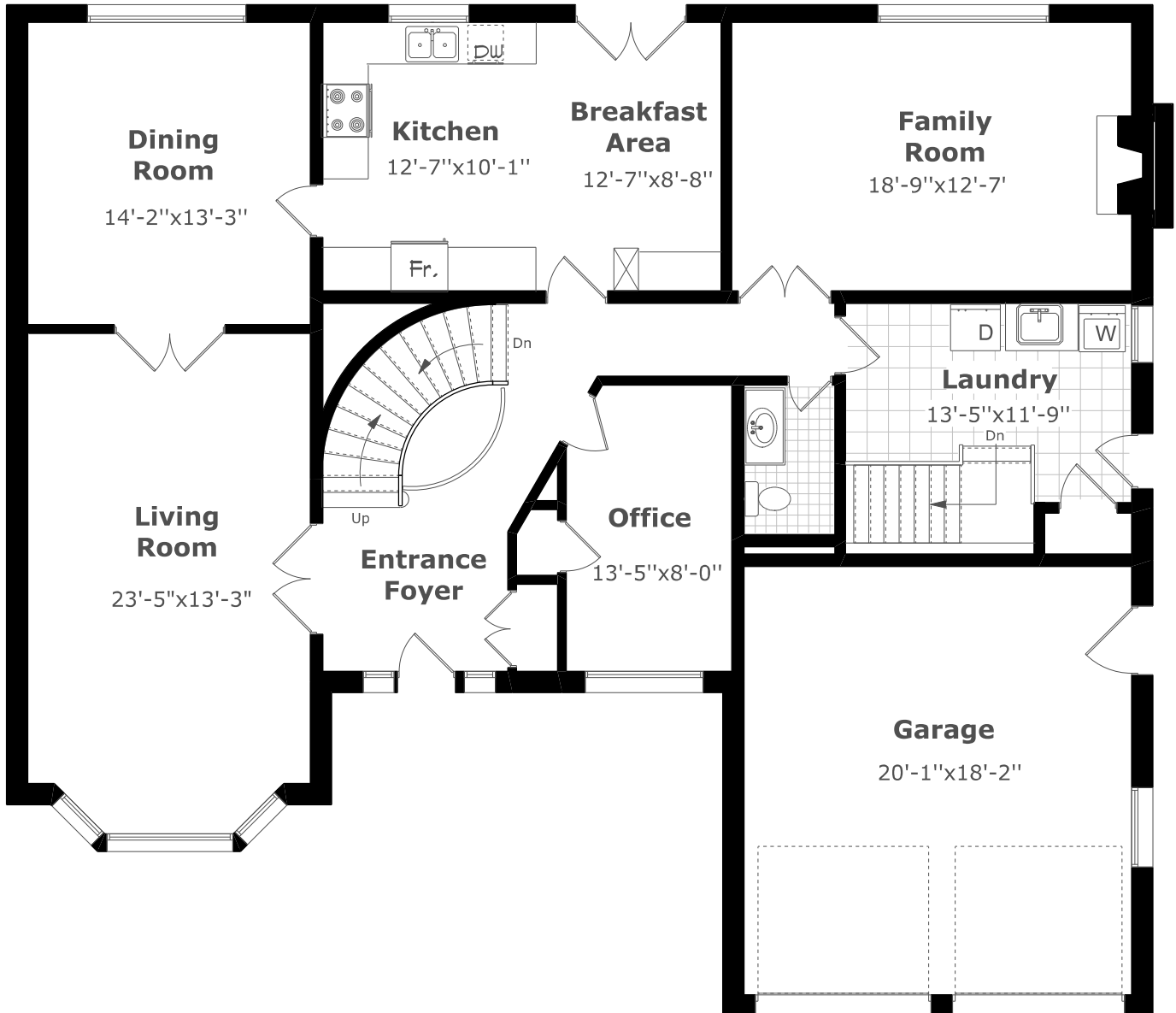
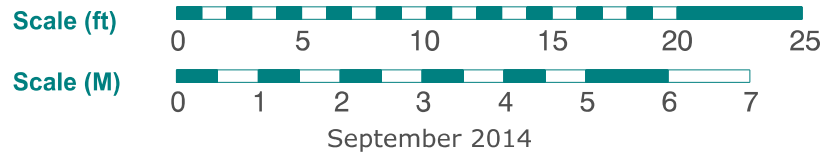


120 Trelawn Avenue



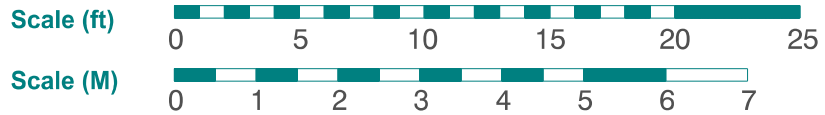
Main Floor Plan

1,719.7 sq. ft.+
419.3 sq. ft. (Garage)

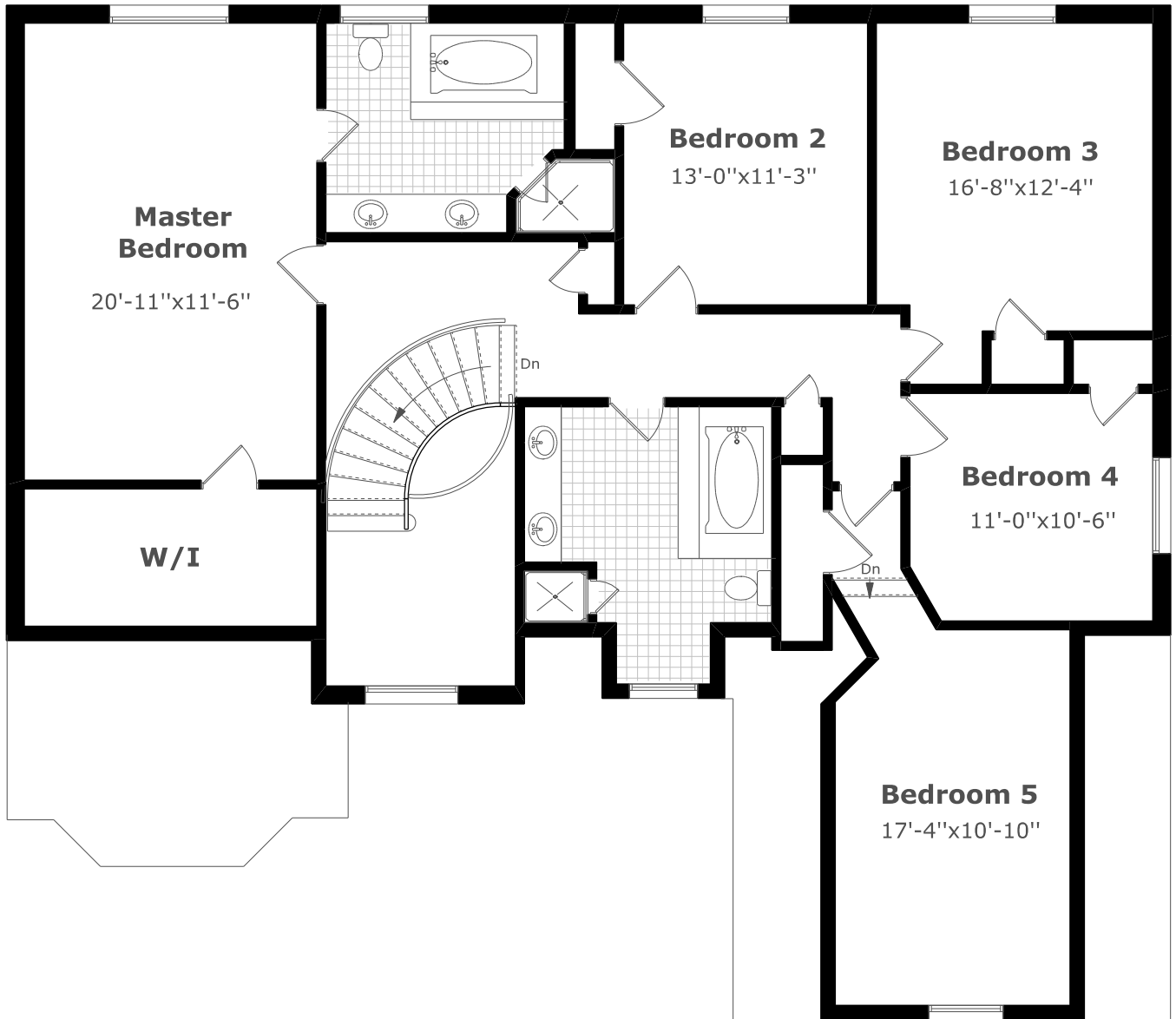


Measurements may not be 100% accurate. Floor Plans provided for illustrative purposes only. Room sizes not used to calculate area.

120 Trelawn Avenue



September 2014



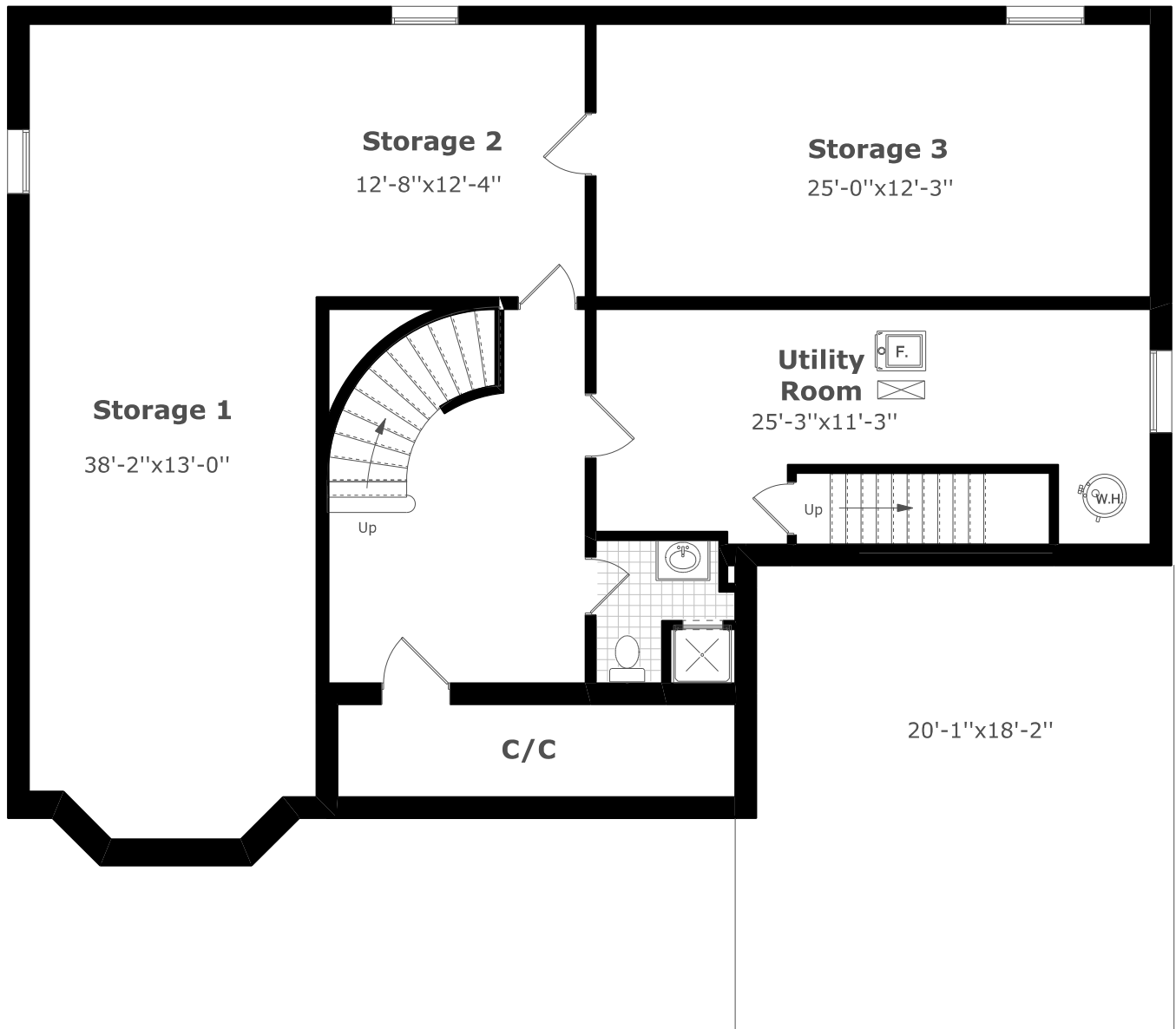
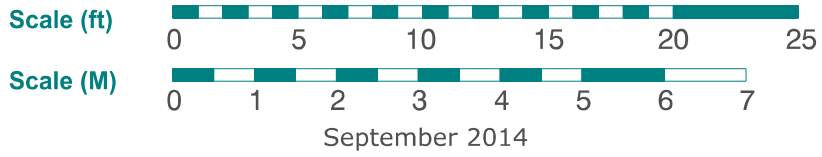
2nd Floor Plan

1,755.6 sq. ft.



Measurements may not be 100% accurate. Floor Plans provided for illustrative purposes only. Room sizes not used to calculate area.

120 Trelawn Avenue



Basement Plan

1,812.4 sq. ft.



Measurements may not be 100% accurate. Floor Plans provided for illustrative purposes only. Room sizes not used to calculate area.