

391 Pine Avenue

Oakville, Ontario



**SCHIAVONE
DIAMOND**

ROYAL LEPAGE
Royal LePage Real Estate Services Ltd., Brokerage



Welcome Home





Gourmet Kitchen





Luxurious Living



Master Suite





Family Time!



Features

391 Pine Avenue

MAIN LEVEL

Entrance

Single door entry with 2 sidelight windows, hardwood floor, pot lights, wood stairs with white square pickets, wood handrail and broadloom runner

Mudroom8'8 x 6'8

Side door entrance, slate tile floor, double mirrored closet doors, crown moulding, drum light fixture

Dining Room 13'11 x 12'0

Hardwood floor, pot lights, knee wall overlooking family room, crown moulding, chrome & crystal light fixture, 2 small upper windows, large bay window with seat, roller blind, drapes & rod with front yard view

Kitchen 12'11 x 11'1

Hardwood floor, cream cabinets with stainless steel hardware, some glass front cabinets, built-in wine storage, under cabinet lighting, Caesarstone counters, undermounted oversized stainless steel sink, brushed stainless steel faucet with pull-out, tumbled stone backsplash, stainless steel GE Profile fridge, GE Profile Performance smooth-top stove, built-in stainless steel Kenmore dishwasher, GE Profile stainless steel over-the-range microwave

Breakfast 11'1 x 9'10

Hardwood floor, bay window with bench seating and custom roman blinds, glass/crystal/chrome pendant light fixture

Living Room 18'7 x 13'0

Hardwood floor, vaulted ceiling, gas fireplace with marble surround and built-in cabinets, chrome firecracker light fixture, sliding glass patio doors to rear deck with transom windows above, custom roller blind, drapes & rod

2pc Bath

Slate tile floor, crown moulding, pedestal sink, chrome faucet & fixtures, window with roman blind

BEDROOM LEVEL

Master Bedroom 13'11 x 12'0

Handscraped hardwood floor, His & Hers closets, front and side window with shutters, drapes & rod, built-in vanity area with 2 sconce lights, pot lights, bedside pendant lights

Ensuite Bath

Marble 12x24 tile floor, free-standing tub, charcoal vanity with Caesarstone counter and 2 undermount sinks, chrome faucets & fixtures, separate glass shower with 12x24 marble tile surround and mosaic tile inlay, nickel firecracker light fixture, sconce lights, corner windows with shutters, drapes and rod overlooking front yard

2nd Bedroom 11'9 x 11'1

Berber carpeting, double closet with built-in shelving/drawers, wainscotting, chandelier, corner window with shutters, drapes & rods overlooking back yard

3rd Bedroom 11'9 x 11'1

Berber carpeting, high window with shutters overlooking front yard, side window with shutters, drapes & rod overlooking side yard, closet niche, built-in desk (can be converted back to closet), drum light fixture

4pc Jack & Jill Bath

Ceramic tile floor, white vanity with integrated sink, tub/shower combination

Upper Hall

Overlooks family room, linen closet

Laundry

Front loading LG washer and dryer, Caesarstone counter, mosaic tile backsplash, drying rod

BASEMENT LEVEL

Recreation Room 12'6 x 11'2 & Games Room 13'10 x 12'11

Laminate floor, windows with mini blinds, large separate storage area, cold cellar

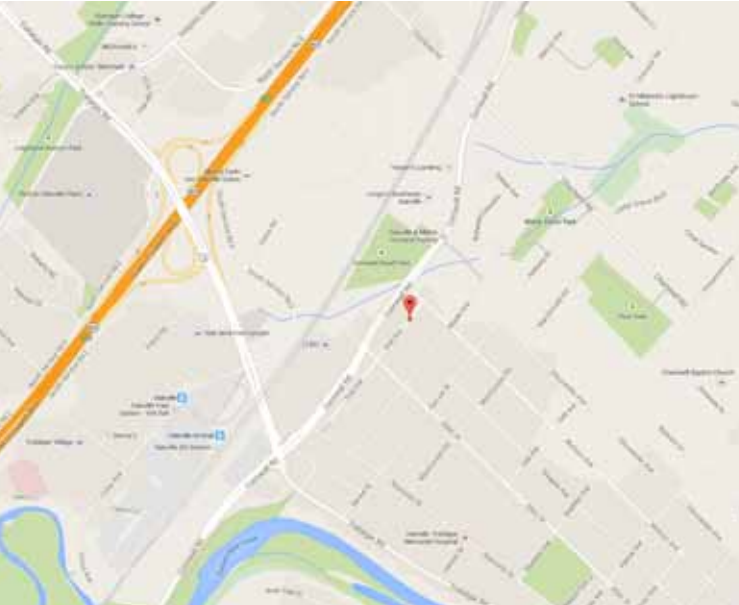
EXTERIOR FEATURES

Rear Yard

Wood deck with built-in planter boxes, corner garden shed, play structure, mature trees

Front Yard

Painted wood porch with columns, pot lights, concrete walkway, double driveway, single car garage



SCHOOL INFORMATION

Public

New Central Elementary (JK - Gr 6)

133 Balsam Drive
905-844-3081

Maple Grove Elementary (Gr 7 - 8)

288 Maple Grove Drive
905-844-9322

E.J. James Elementary (Fr. Imm. Gr 1 - 8)

338 Cairncroft Road
905-845-2015

Oakville Trafalgar Secondary (Gr. 9 - 12) (Fr. Imm.) (Gifted)

1460 Devon Road
905-845-2875

Catholic

St. Vincent Elementary (JK - Gr 8)

1280 Braeside Drive
905-849-0777

St. Mary Elementary (Early Fr. Imm. Gr 1 - 3)

2175 Colonel William Pkwy
905-469-0038

St. Joseph Elementary (Fr. Imm. Gr 5 - 8)

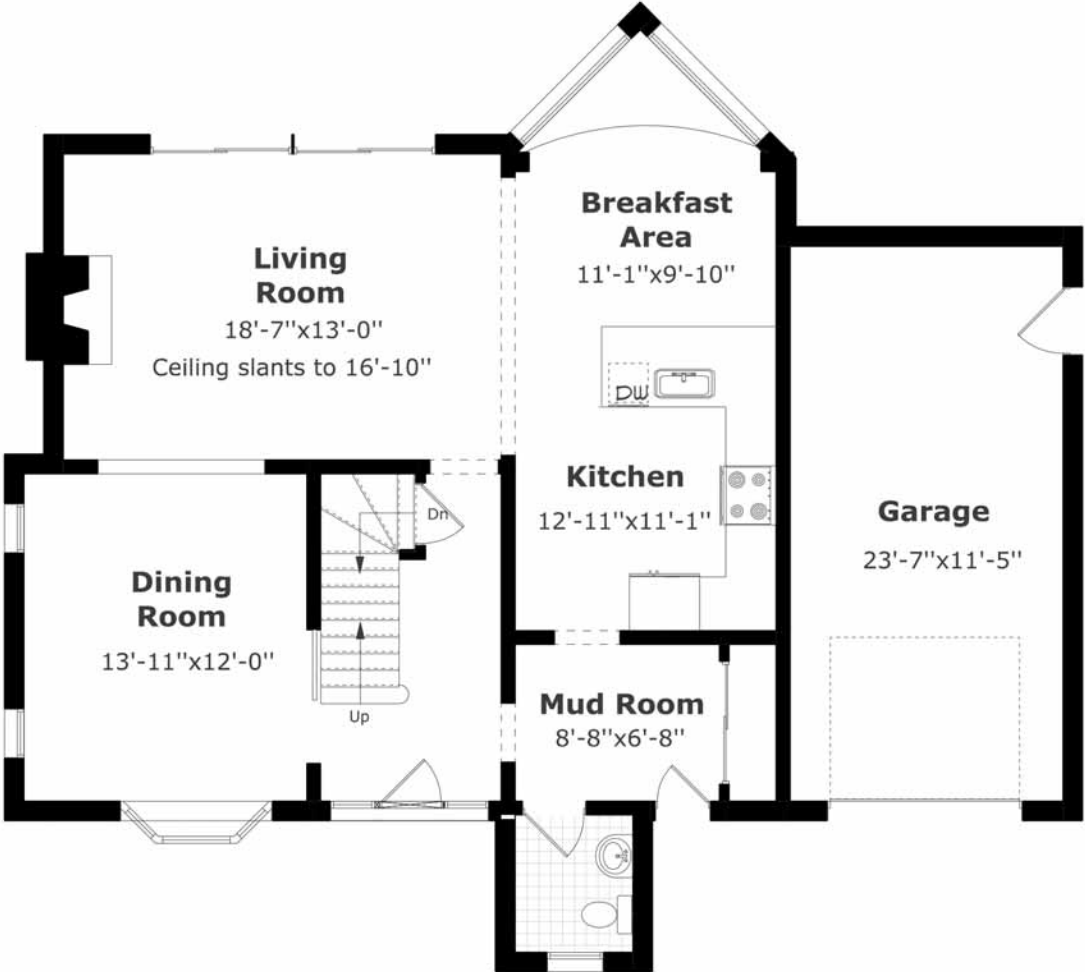
477 Warminster Drive
905-827-4231

St. Thomas Aquinas Secondary (Gr 9 - 12) (Fr. Imm.)

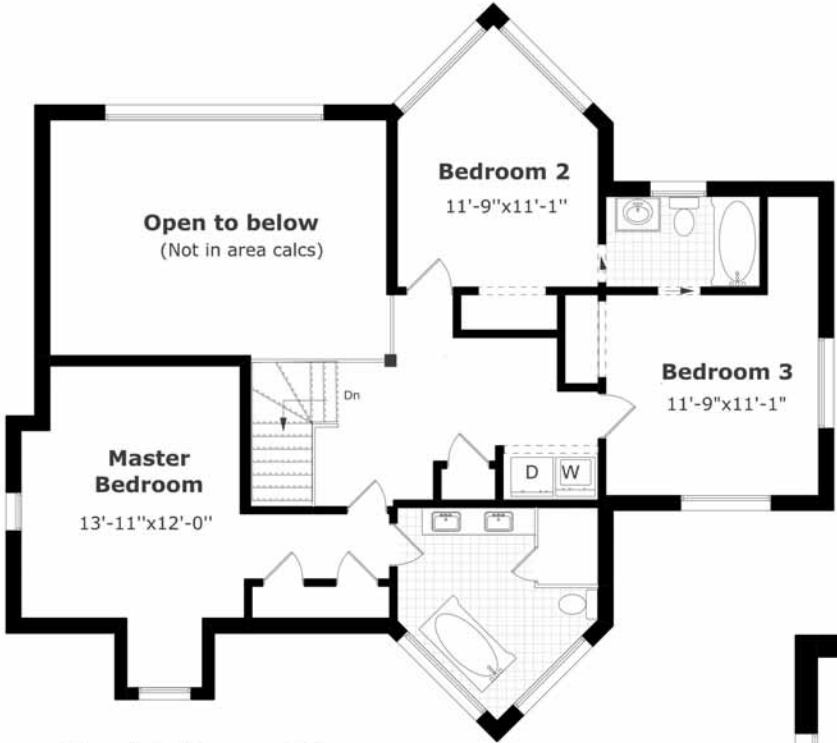
124 Dorval Drive
905-842-9494

Floor Plans

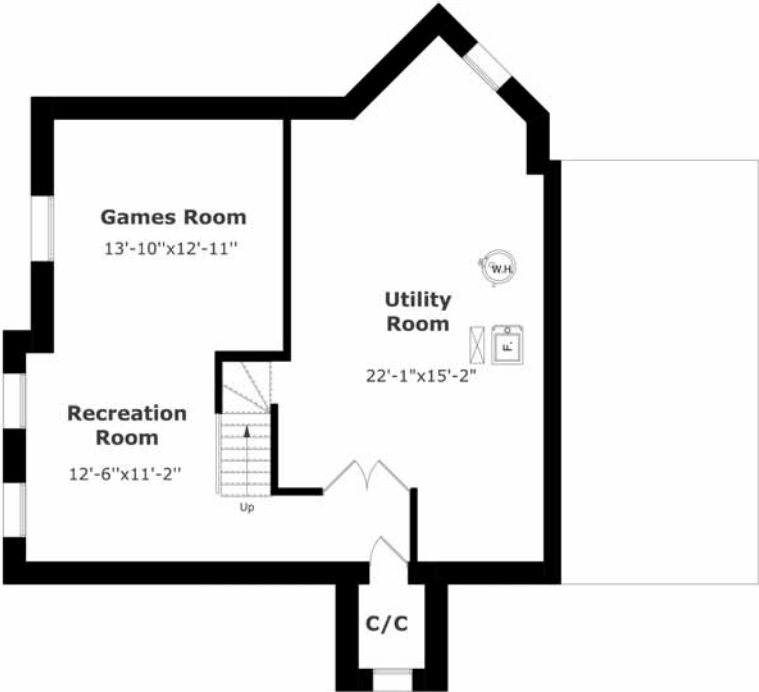
391 Pine Avenue



Main Floor Plan
1,023.7 sq. ft.+
313.5 sq. ft. (Garage)



2nd Floor Plan
989.6 sq. ft.



Lower Level Plan
1,020.2 sq. ft.

Backyard Retreat





For more information & pictures visit:
SchiavoneDiamond.com



Bill Schiavone

Broker

Tel 905.338.6550

Cell 416.999.6084

Fax 905.338.7452

Bill@SchiavoneDiamond.com



Steve Diamond

Sales Representative

Tel. 905.338.6550

Cell 416.566.9496

Fax. 905.338.7452

Steve@SchiavoneDiamond.com