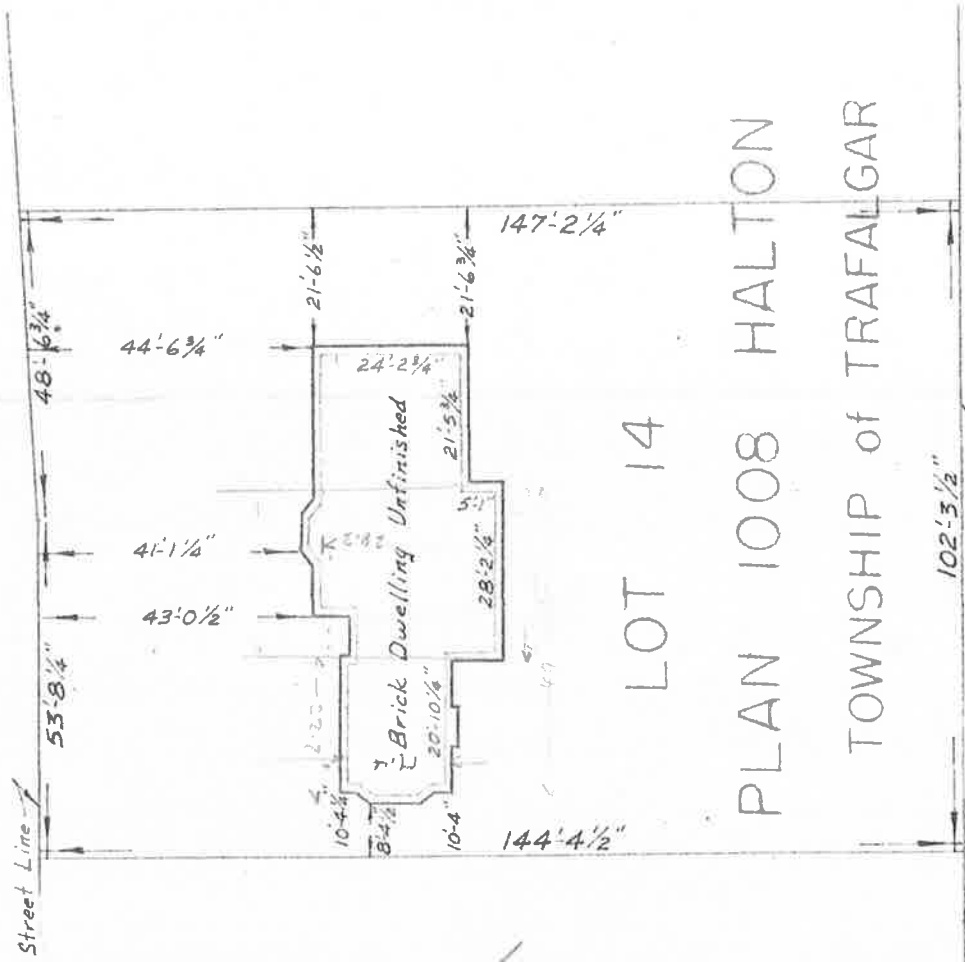


Sewell 1960 = 0.60'

CLAXTON DRIVE



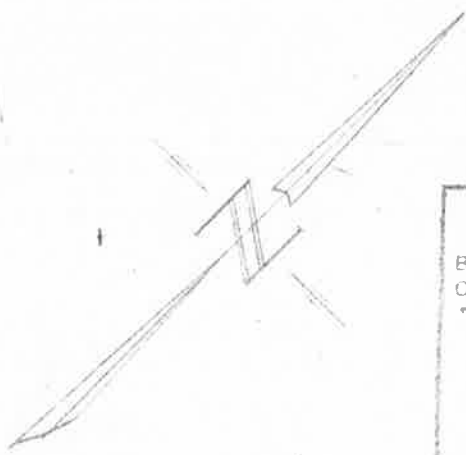
LOT 14

PLAN 1008 HALTON

TOWNSHIP OF TRAFALGAR

S.E. 1/4 Limit of Plan 1008

TOTAL AREA = 1750 SQ. FT.  
 TOTAL PERIMETER = 1172 FT.  
 TOTAL AREA = 1750 SQ. FT.  
 TOTAL PERIMETER = 1172 FT.



SCALE: 1" = 30'

**SEWELL & SEWELL**  
 BURLINGTON 11 JAMES ST. DISTRICT NO. 4 9070  
 OAKVILLE 9 ROBINSON ST. DISTRICT NO. 1 4171

*[Signature]*  
 ONTARIO LAND SURVEYOR

DATE OCT. 26, 1960. JOB No. 60-355

UNITED BUILDERS

129 CLAXTON DRIVE