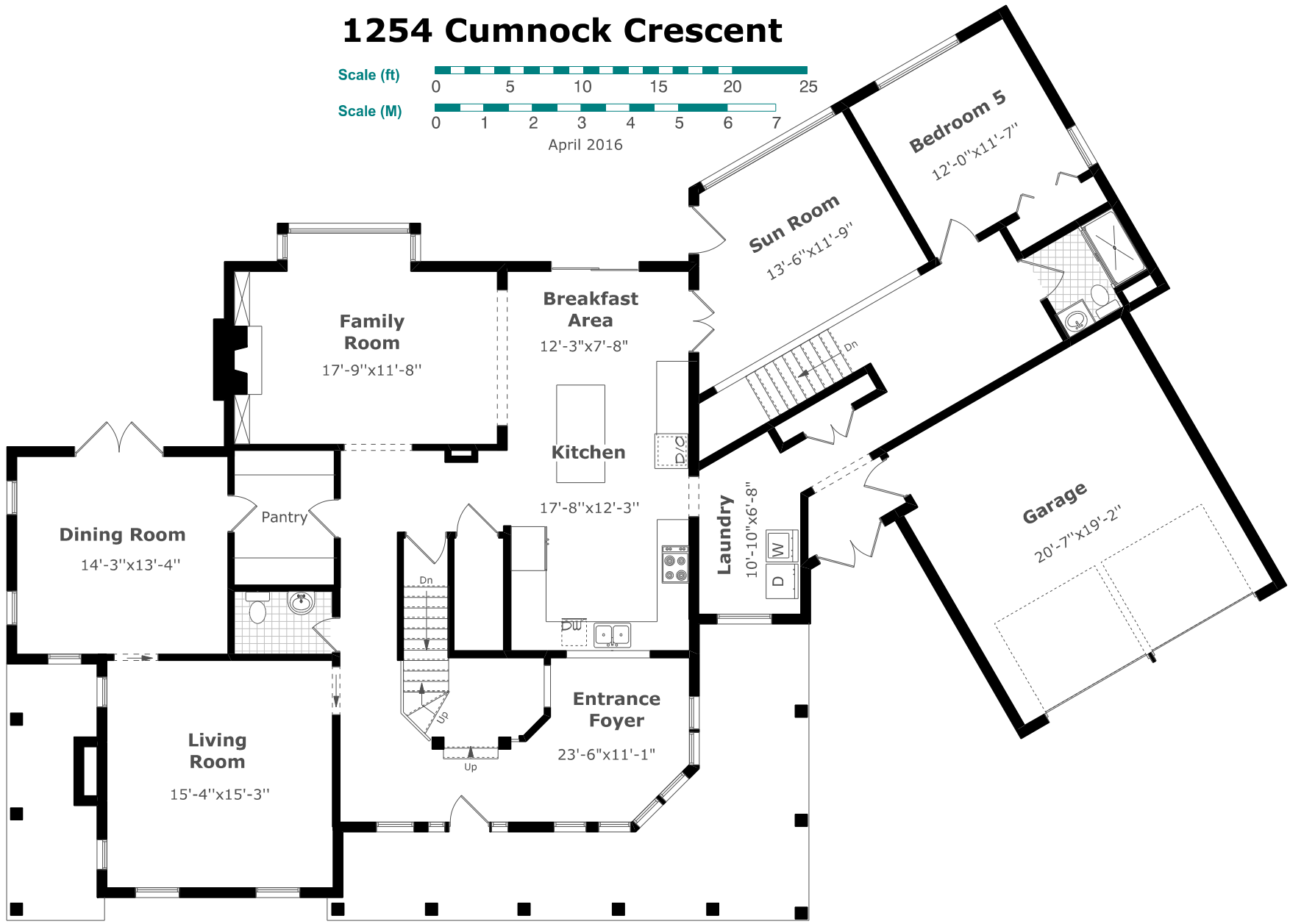
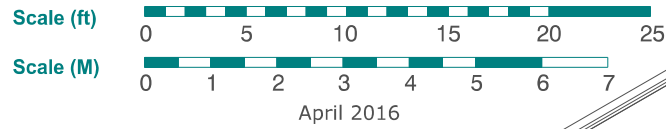


1254 Cumnock Crescent



Main Floor Plan

2,386.3 sq. ft.+
433.0 sq. ft. (Garage)



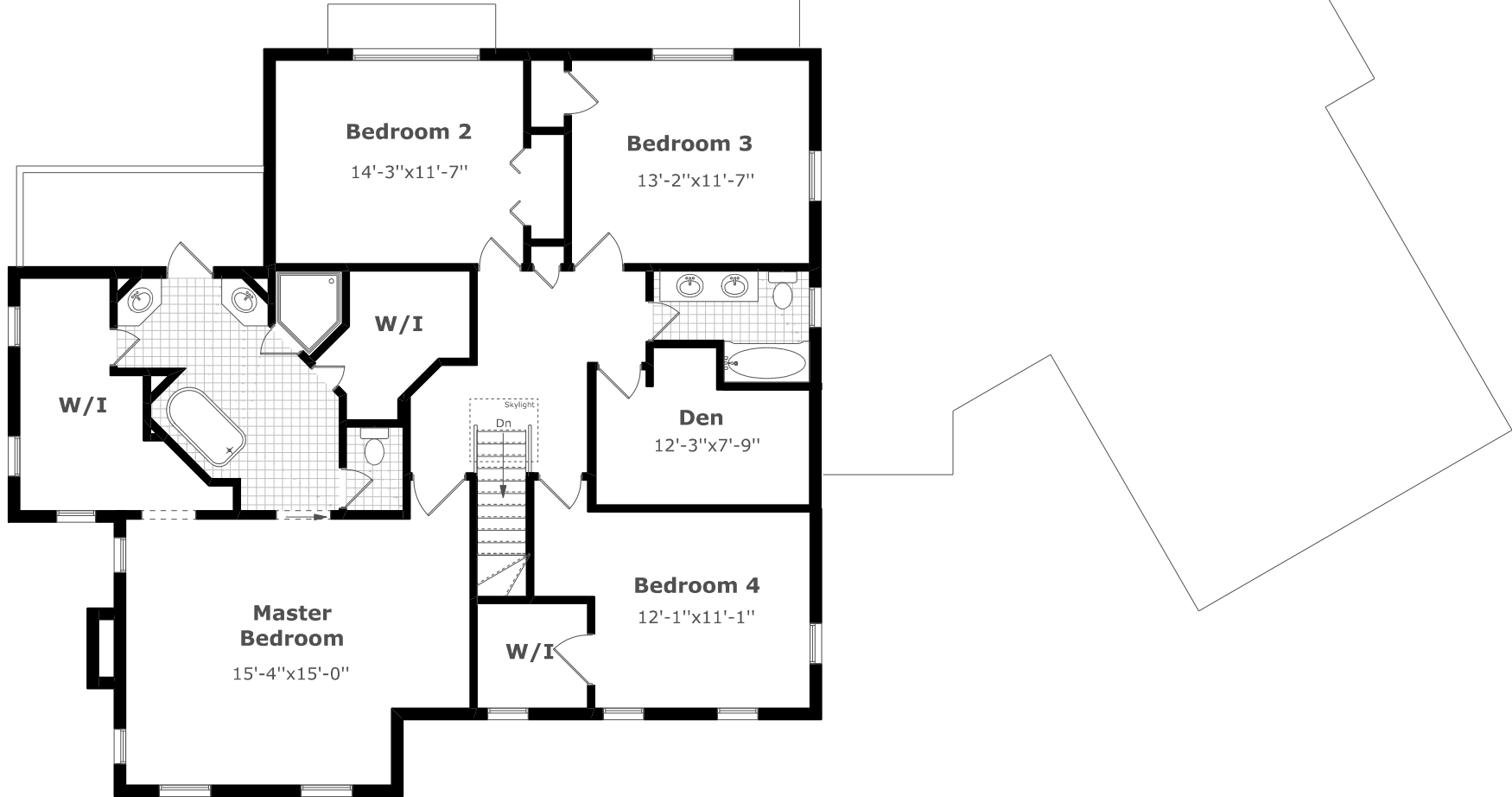
Measurements may not be 100% accurate. Floor Plans provided for illustrative purposes only. Room sizes not used to calculate area.

1254 Cumnock Crescent

Scale (ft) 0 5 10 15 20 25

Scale (M) 0 1 2 3 4 5 6 7

April 2016



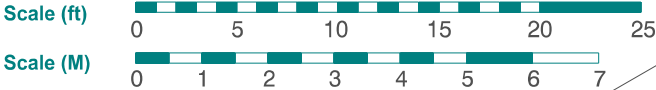
2nd Floor Plan

1,617.6 sq. ft.

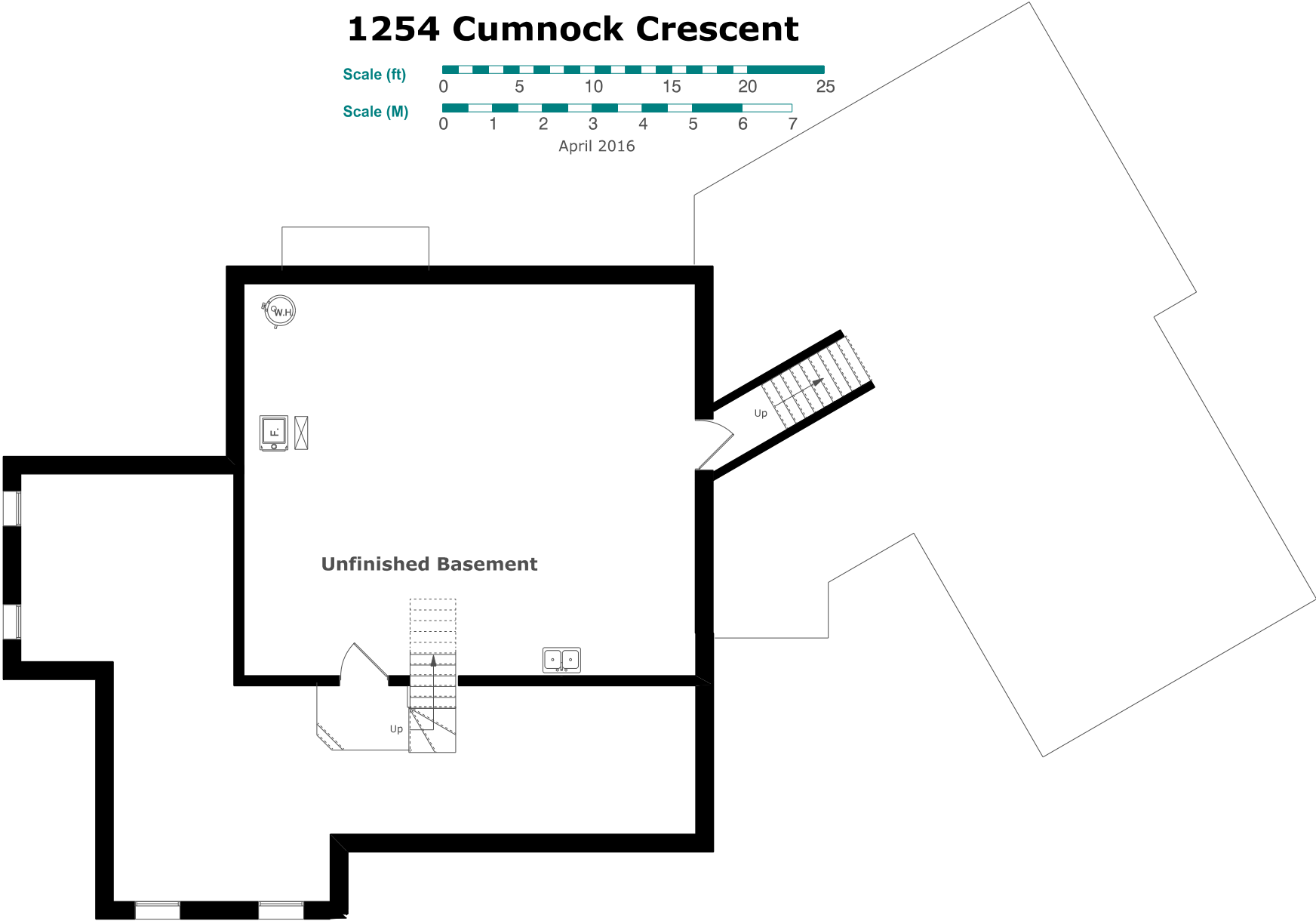


Measurements may not be 100% accurate. Floor Plans provided for illustrative purposes only. Room sizes not used to calculate area.

1254 Cumnock Crescent



April 2016



Unfinished Basement

Basement Plan

1,658.3 sq. ft.



Measurements may not be 100% accurate. Floor Plans provided for illustrative purposes only. Room sizes not used to calculate area.