

# 61 Chartwell Road

Oakville, Ontario



**SCHIAVONE  
DIAMOND**

**ROYAL LEPAGE**  
Royal LePage Real Estate Services Ltd., Brokerage

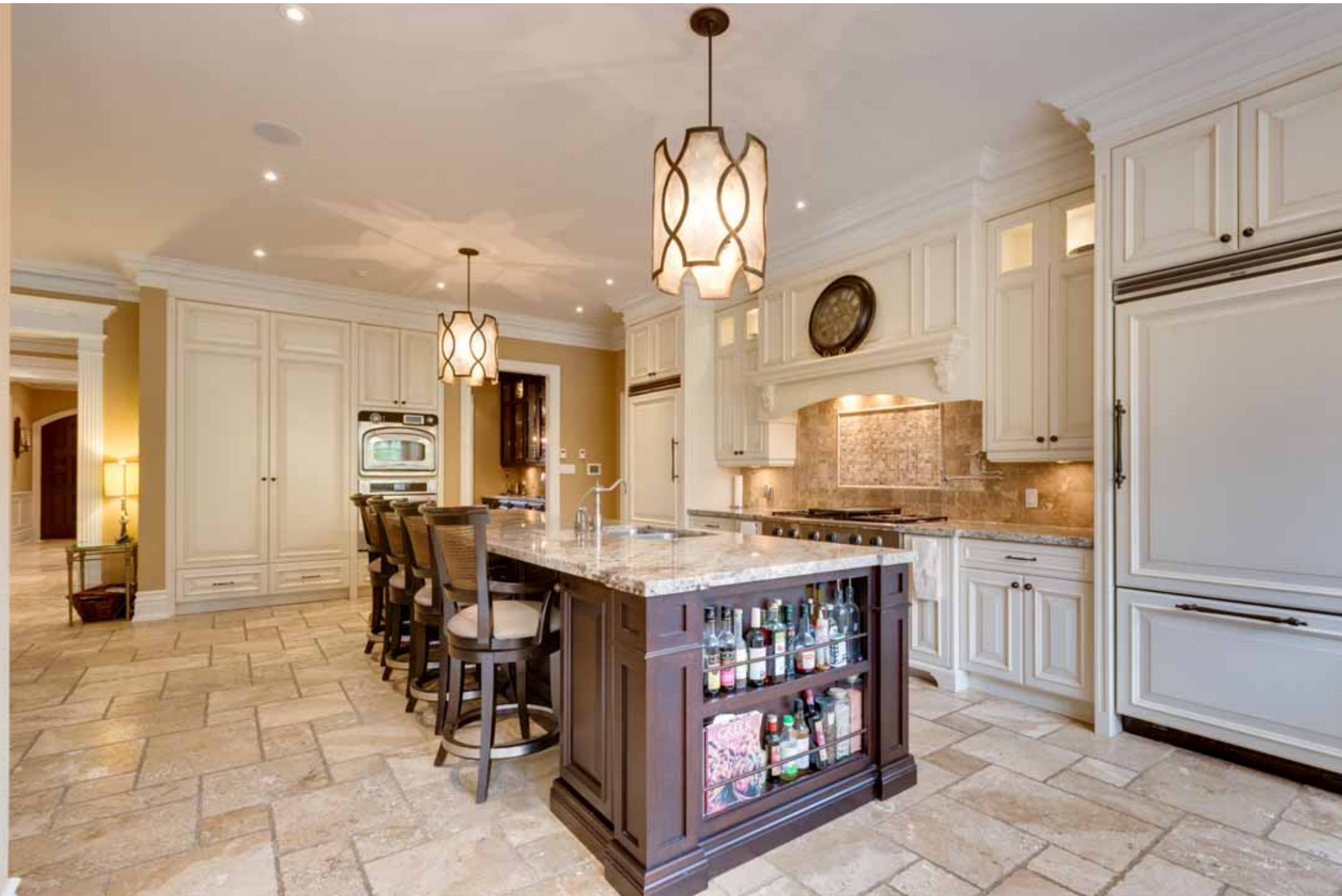




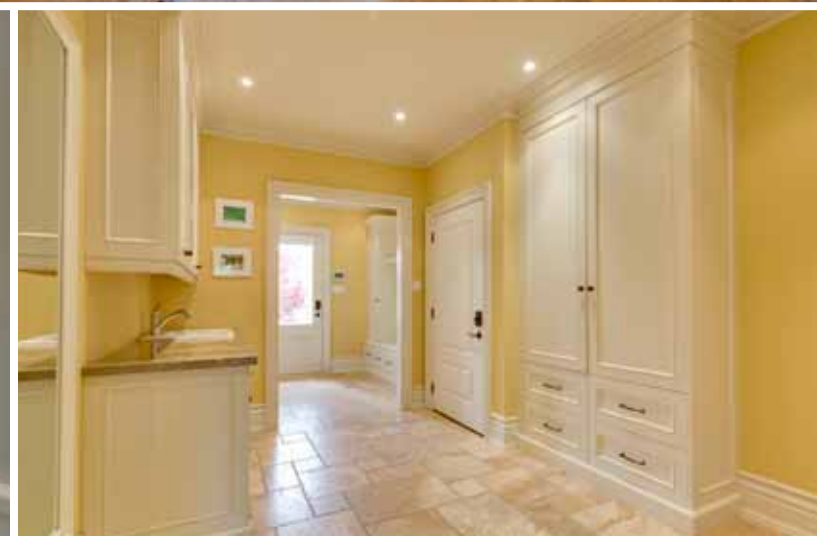




# Gourmet Kitchen









# Master Suite













# Features

# 61 Chartwell Road

## MAIN LEVEL

### Entry 16'1 x 7'6

Double arched wood door entry, stone tile floor, wainscotting, crown moulding, double door coat closet with built-ins, pot lights, scone lights, hardwood stairs with white risers & wrought iron pickets

### Living Room 16'1 x 14'4

Dark-stained hardwood floor, beamed ceiling, gas fireplace with granite surround & wood mantle, custom built-in cabinets and bookcases, pot lights, built-in speakers, large window with custom shade & front yard view

### Dining Room 20'6 x 14'4

Dark-stained hardwood floor, beamed ceiling, pot lights, built-in speakers, large window with custom shade & front yard view

### Butler's Pantry/Servery

Stone floor, dark wood cabinets with glass front uppers, granite counter, undermounted bar sink with brushed stainless steel faucet, integrated bar fridge, integrated Miele dishwasher, tumbled marble backsplash, crow moulding, pot lights

### Kitchen 19'0 x 18'2

Heated stone floor, off-white custom cabinets with dark wood island, granite counters, tumbled marble backsplash, crown moulding, undermounted double stainless steel sink with

brushed stainless gooseneck faucet, spray & water softener, garburator, 2 Viking integrated fridges, integrated Miele dishwashers, KitchenAid wall oven, Turbo Chef wall oven, Dacor 6-burner gas cooktop with griddle, pot lights, 2 pendants over island, walk-in pantry with built-in shelving

### Breakfast Room 14'4 x 11'9

Heated stone floor, wrought iron and glass chandelier, crown moulding, built-in speakers, pot lights, French doors to Muskoka room

### Family Room 18'1 x 18'0

Dark-stained hardwood floor, gas fireplace flanked with built-in cabinets and 2 windows, crown moulding, pot lights, 2 French doors to Muskoka room

### Office/Study 12'1 x 6'4

Dark-stained hardwood floor, custom built-in desk and bookshelves, window with custom shade and side yard view

### Muskoka Room 21'6 x 11'4

Heated stone floor, cedar ceiling, full windows and French door to rear patio, overlooks rear yard, pool and patio, built-in speakers, pot lights

### Play Room/Craft Room 11'9 x 10'1

Stone floor, custom built-in desk & shelves, crown moulding, pot lights, window with custom shade and rear yard view

### Mudroom/Laundry Room 12'4 x 10'1

Stone floor, entry door from driveway, inside entry from garage, custom built-in closets and storage, double door closet with built-ins, laundry closet with front loading Whirlpool washer, Miele dryer and folding counter, laundry sink with faucet, upper cabinets, crown moulding, pot lights

### 2pc Bath

Travertine tile floor, imported glass pedestal sink with matching mirror, chrome faucet & fixtures, crown moulding, pot lights

## BEDROOM LEVEL

### Master Bedroom 22'6 x 18'2

Dark-stained hardwood floor, gas fireplace with limestone mantle, large private balcony overlooking rear yard, ceiling fan, built-in speakers, pot lights, 4 windows with custom blinds overlooking side & rear yard, walk-in closet/dressing area with custom built-ins, granite topped built-in dresser and doorway to 'secret office' with wood floor, wainscotting and built-in cabinets

### 5pc Ensuite Bath

Heated marble tile floor, cream His & Hers vanities with granite counters and undermounted sinks, brushed stainless steel faucets & fixtures, separate water closet, Maax jetted bathtub with marble tile surround and glass front display cabinet, separate glass enclosed steam shower

with bench seat, marble tile surround and rainfall shower head, crown moulding, pot lights, wall-mounted tv

### 2nd Bedroom 17'9 x 13'7

Dark-stained hardwood floor, dressing area with wall-to-wall closet and built-ins, built-in desk, bookshelves and window seat, 'starlight' ceiling, pot lights, crown moulding, 2 windows with custom blinds overlooking front & side yards

### 4pc Ensuite

Heated marble tile floor, cream vanity with granite counter and vessel sink, chrome faucet and fixtures, framed mirror, jetted tub with glass shower doors and rainfall shower head, pot lights

### 3rd Bedroom 16'0 x 14'4

Dark-stained hardwood floor, closet with built-ins, ceiling fan, crown moulding, window with custom built-ins, mounted tv, window with custom blind overlooking front yard

### 3pc Ensuite

Heated tile floor, wood casement-style vanity with marble counter and undermounted sink, brushed stainless steel faucet & fixtures, separate glass shower with rainfall shower head and hand-held spray



# Features

# 61 Chartwell Road

### 4th Bedroom 16’3 x 14’4

Dark-stained hardwood floor, built-in desk, cabinets and window seat, walk-in closet with built-ins, crown moulding, built-in speakers, mounted tv

### 4pc Ensuite

Heated marble tile floor, cream vanity with marble counter and undermounted sink, chrome faucet & fixtures, framed mirror, jetted tub with glass doors, rainfall shower head & hand held spray, pot lights, window with custom blind overlooking side yard

### BASEMENT LEVEL

Radiant heated floors throughout  
Large storage room and under stairs storage closet  
36' x 6’ cold cellar  
‘Secret’ temperature controlled wine cellar with stone floor and custom stone storage cubbies  
Walk-up to rear yard with mudroom including storage cabinets, 4pc bath with 2 person steam shower and infrared sauna

### 2pc Bath

Stone floor, black vanity with quartz counter, undermounted sink, chrome faucet and fixtures, pot lights

### Recreation Room 22’3 x 17’8

Berber broadloom, gas fireplace with granite surround and wood mantle with built-ins, pot lights built-in speakers, 2 windows with custom shades

### Bar 16’2 x 13’8

Custom dark wood bar with built-in cabinets and glass front cabinets, secret doorway to wine cellar, granite counters with undermounted bar sink and oiled bronze faucet, KitchenAid bar fridge,

### 5th Bedroom 20’3 x 10’3

Berber broadloom, drum light fixture, window with custom shade

### Exercise Room 15’7 x 13’6

Rubberized flooring, glass enclosed, mounted tv, 2 windows with custom shades, built-in speakers

### Theatre Room 22’2 x 15’7

Hidden behind a library door, berber broadloom, raised seating platform, ‘starlight’ ceiling, granite topped bar seating, sound-proofed walls, programmed lighting, built-in sound system, pot lights

### EXTERIOR & ADDITIONAL FEATURES

- Custom built in 2008 by Renaissance Homes on nearly 1/2 acre
- Extensive stone work in front and rear yard
- ‘Secret rooms’ including theatre room, master office and wine cellar
- Kaleidescape Home Entertainment system throughout
- Huge skylight in second floor landing

Stone exterior with square-cut flagstone walkway and covered porch, professionally landscaped with mature trees & perennials, 2 car tandem attached heated garage as well as 2 car detached garage, driveway parking for 8 cars

Rear square-cut flagstone heated patio with stone knee walls, built-in outdoor kitchen including Viking gas bbq, infrared grill and warming drawer, built-in natural stone hot tub, Oasis unite ozone in-ground pool, 2pc bath and change room attached to garage, outdoor shower, natural stone walkways, professionally landscaped with bracketing gardens, mature trees & perennials, irrigation system, wrought iron fencing

### SCHOOL INFORMATION

**Public**  
**New Central Elementary (JK - Gr 6)**  
133 Balsam Drive  
905-844-3081

**Maple Grove Elementary Gr 7 - 8)**  
288 Maple Grove Drive  
905-844-9322

**E.J. James Elementary (Fr. Imm. Gr 1 - 8)**  
338 Cairncroft Road  
905-845-2015

**Oakville Trafalgar Secondary (Gr 9 - 12) (Fr. Imm.)**  
1460 Devon Road  
905-845-2875

**Catholic**  
**St. Vincent Elementary (JK - Gr 8)**  
1280 Braeside Drive  
905-849-0777

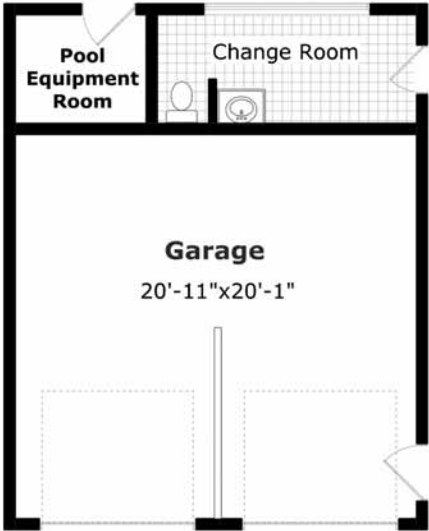
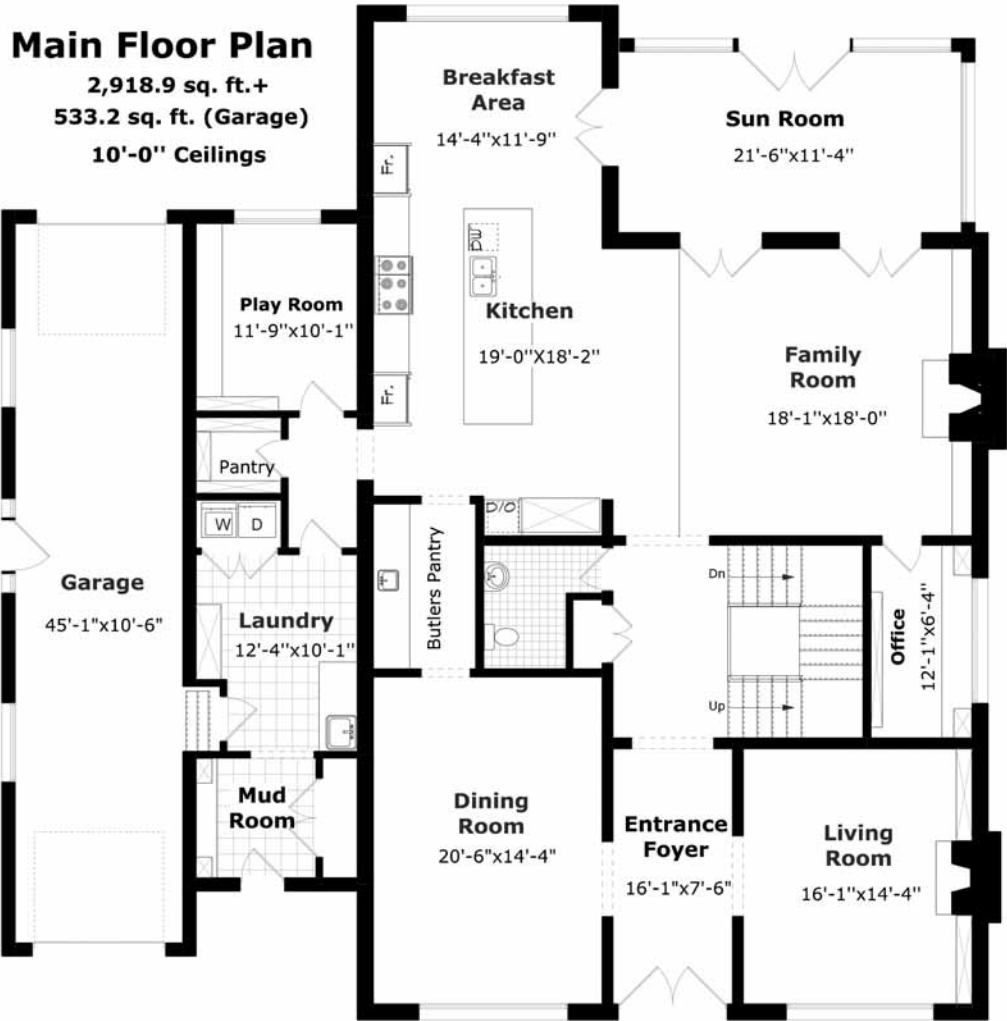
**St. Joseph Elementary (Fr. Imm. Gr 5 - 8)**  
477 Warminster Drive  
905-827-4231

**St. Thomas Aquinas Secondary (Gr 9 - 12) (Fr. Imm.)**  
124 Dorval Drive  
905-842-9494

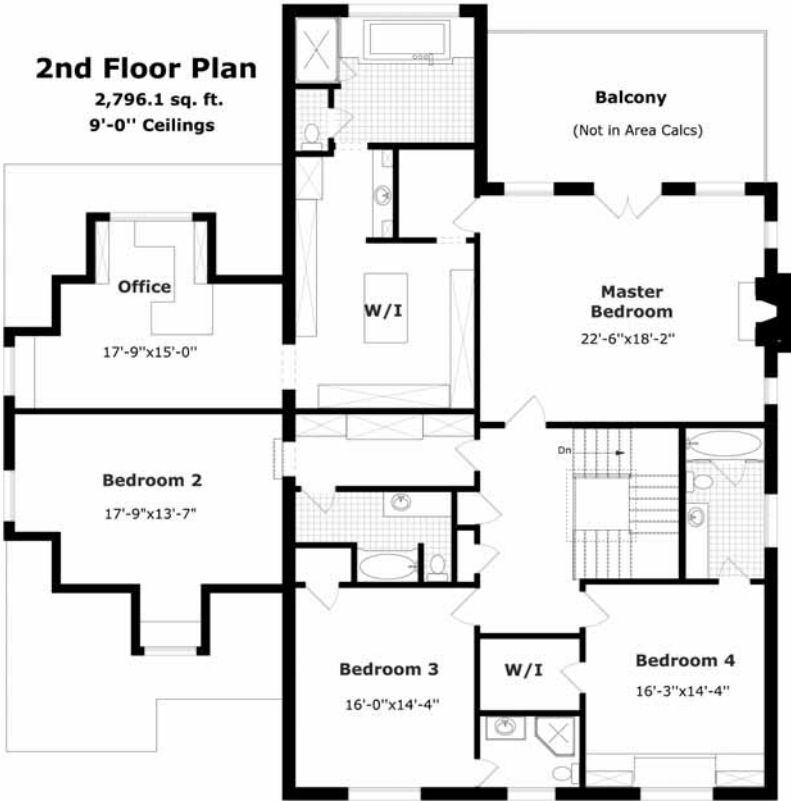


# Floor Plans

# 61 Chartwell Road



**Garage**  
469.3 sq. ft.+  
138 sq. ft. (Change & Equipment Room)





# Backyard Retreat





# Outdoor Paradise







For more information & pictures visit:  
**SchiavoneDiamond.com**



**Bill Schiavone**

Broker

**Tel 905.338.3737**

Cell 416.999.6084

Fax 905.338.7452

Bill@SchiavoneDiamond.com



**Steve Diamond**

Sales Representative

**Tel 905.338.3737**

Cell 416.566.9496

Fax. 905.338.7452

Steve@SchiavoneDiamond.com