

SCHIAVONE DIAMOND

ROYAL LePAGE
Royal LePage Real Estate
Services Ltd., Brokerage



School Information

Public

Oakwood Elementary (JK - Gr 5)
357 Bartos Drive
905-845-0412

W.H. Morden Elementary (JK - Gr 8)
180 Morden Road
905-844-9612

Pine Grove Elementary (Fr. Imm. Gr 1 - 8)
529 4th Line
905-844-6371

T.A. Blakelock Secondary (Gr 9 - 12) (Fr. Imm.)
1160 Rebecca Street
905-827-1158

Catholic

St. Vincent Elementary (JK - Gr 8)
128

St. James Elementary (JK - Gr 8)
255 Morden Road
905-339-0731

St. Joseph Elementary (Fr. Imm. Gr 5 - 8)
477 Warminster Drive
905-827-4231

St. Thomas Aquinas Secondary (Gr. 9 - 12) (Fr. Imm.)
124 Dorval Drive
905-842-9494

For more information & pictures visit:
SchiavoneDiamond.com



Bill Schiavone

Broker

Tel 905.338.3737

Cell 416.999.6084

Fax. 905.338.7452

Bill@SchiavoneDiamond.com



Todd Pilatzke

Sales Representative

Tel 905.338.3737

Cell 905.330.5652

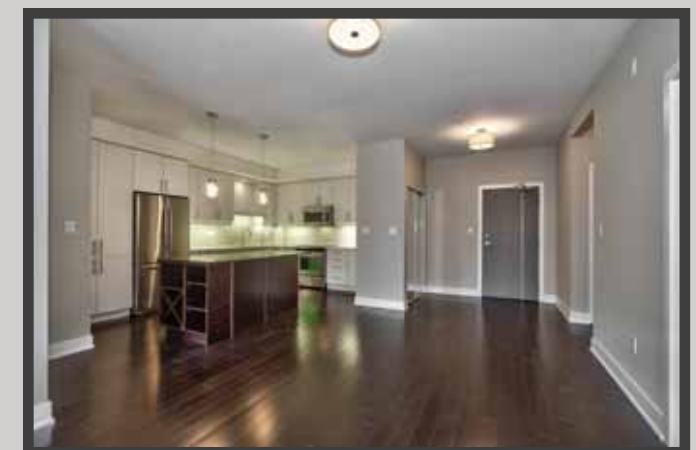
Fax. 905.338.7452

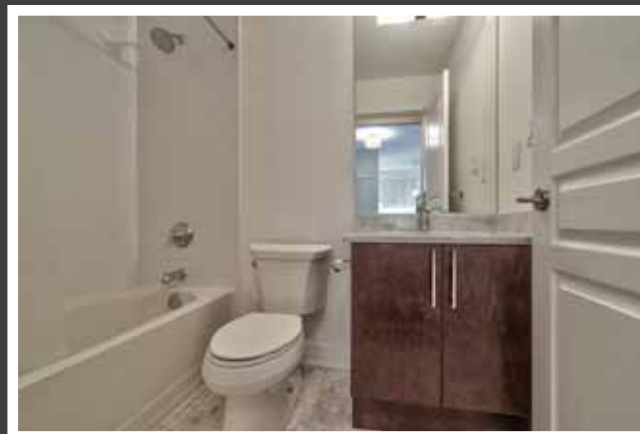
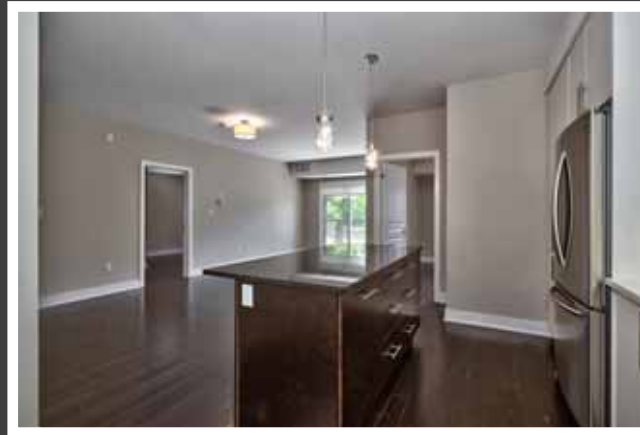
Todd@SchiavoneDiamond.com

SCHIAVONE DIAMOND

ROYAL LePAGE
Royal LePage Real Estate
Services Ltd., Brokerage

Welcome to...
#305-128 Garden Drive





Main Level

Entry

Dark-stained hardwood floor, double mirrored sliding door closet with white wire shelving

Living/Dining Room 23'8 x 11'3

Dark-stained hardwood floor, upgraded drum light fixtures, sliding glass patio doors to south-facing balcony

Kitchen 15'5 x 9'6

Dark-stained hardwood floor, white cabinetry with large pantry cabinet & slide out shelving, stainless steel bar hardware, Caesarstone countertops, under-cabinet lighting, extended dark wood island with granite countertop, pot drawers, pull-out garbage/recycle bins and wine storage/shelving, stainless steel over-sized sink with chrome pull-out faucet and soap dispenser, glass tile backsplash, 2 pendants above island, stainless steel Samsung fridge, stainless steel Whirlpool built-in dishwasher, slide-in smooth-top stove and over-the-range microwave

Master Bedroom 15'7 x 11'

Dark-stained hardwood floor, walk-in closet, upgraded drum light fixture, south-facing window with view of trees

3pc Ensuite Bath

Basket-weave marble tile floor, dark-stained vanity with stainless steel bar hardware, marble countertop and undermounted Kohler sink, chrome faucet and fixtures, Kohler toilet, glass enclosed shower with basket-weave marble tile floor and white tile surround, upgraded light fixture

2nd Bedroom 11' x 9'

Dark-stained hardwood floor, double sliding door closet, upgraded drum light fixture, south-facing window with view of trees

4pc Main Bath

Basket-weave marble tile floor, dark stained vanity with stainless steel bar hardware and marble counter with undermounted Kohler sink, Kohler toilet, chrome faucet and fixtures, tub/shower combination with white tile surround, upgraded light fixture

Additional Features

- One of the larger units in the building
- In-suite Laundry with tiled floor and stacked Whirlpool front-loading washer and dryer
- Large south-facing balcony with pot light and glass insert railing
- Building amenities include exercise gym, roof-top terrace/lounge, party room and visitor parking
- Locker easily accessed from across the hall