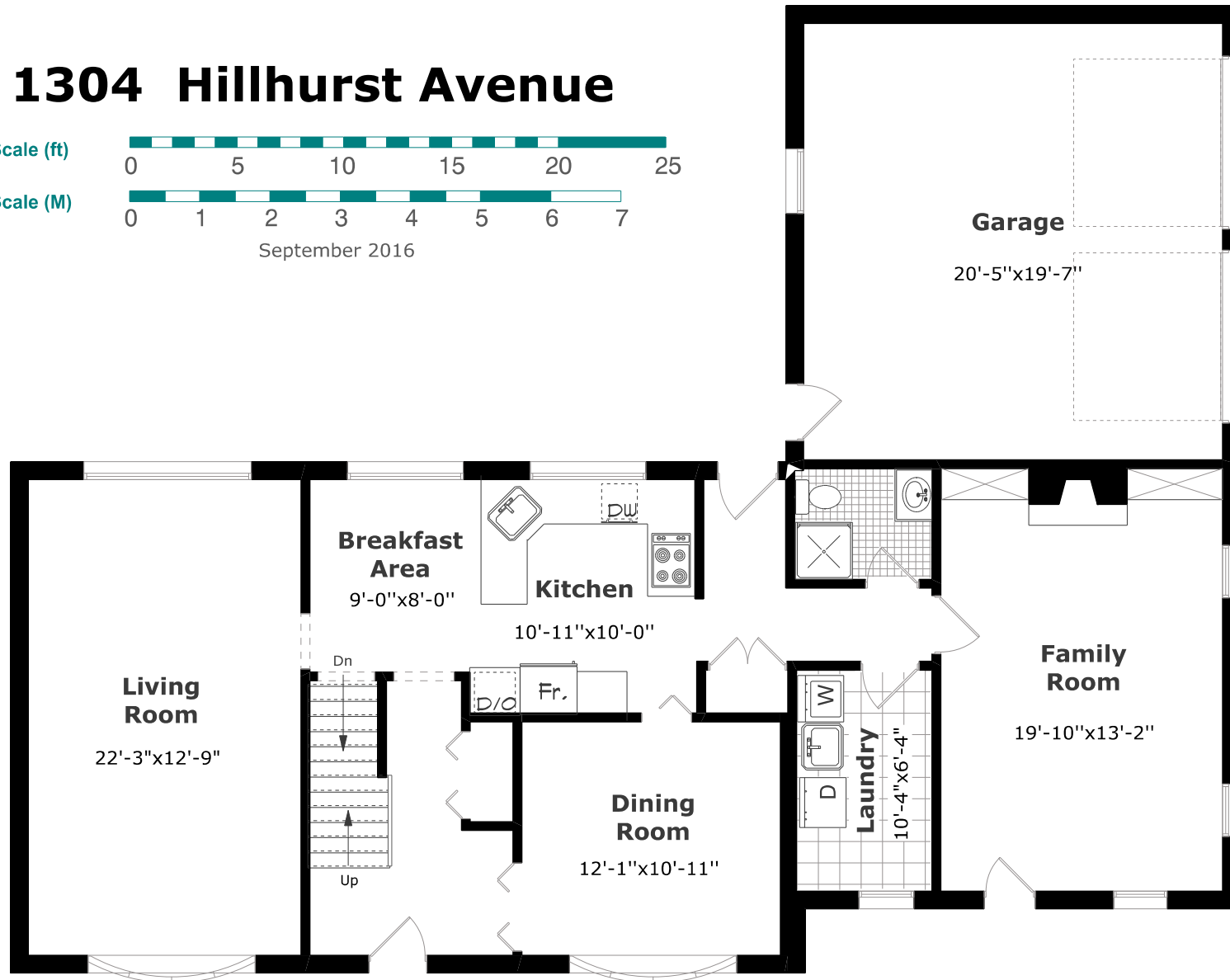


1304 Hillhurst Avenue



September 2016



Main Floor Plan

1,314.5 sq. ft.+

453.3 sq. ft. (Garage)

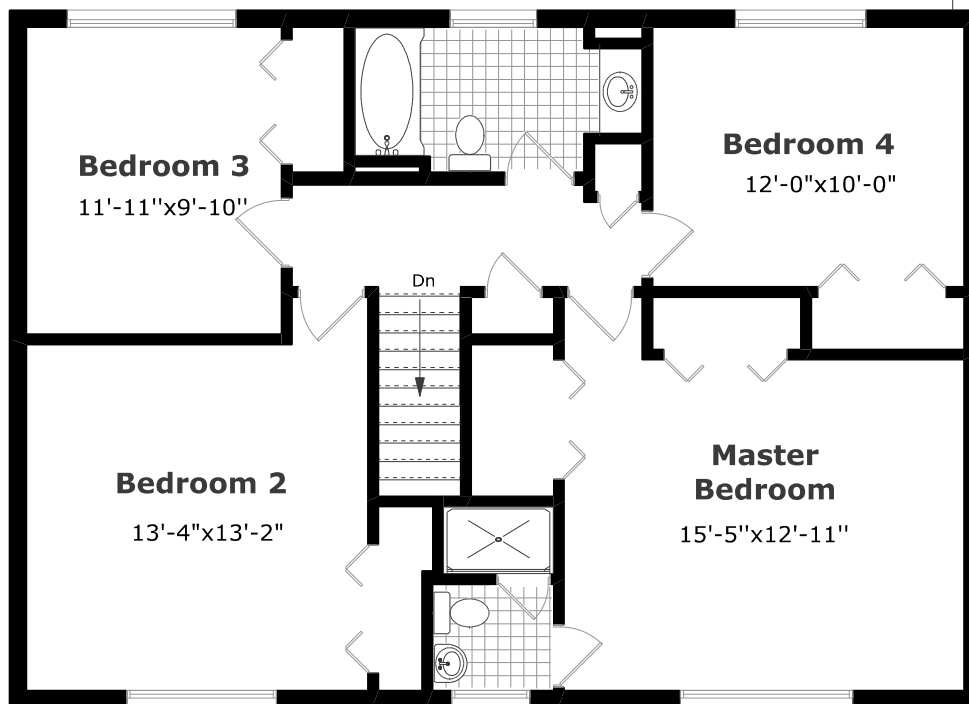


Measurements may not be 100% accurate. Floor Plans provided for illustrative purposes only. Room sizes not used to calculate area.

1304 Hillhurst Avenue



September 2016



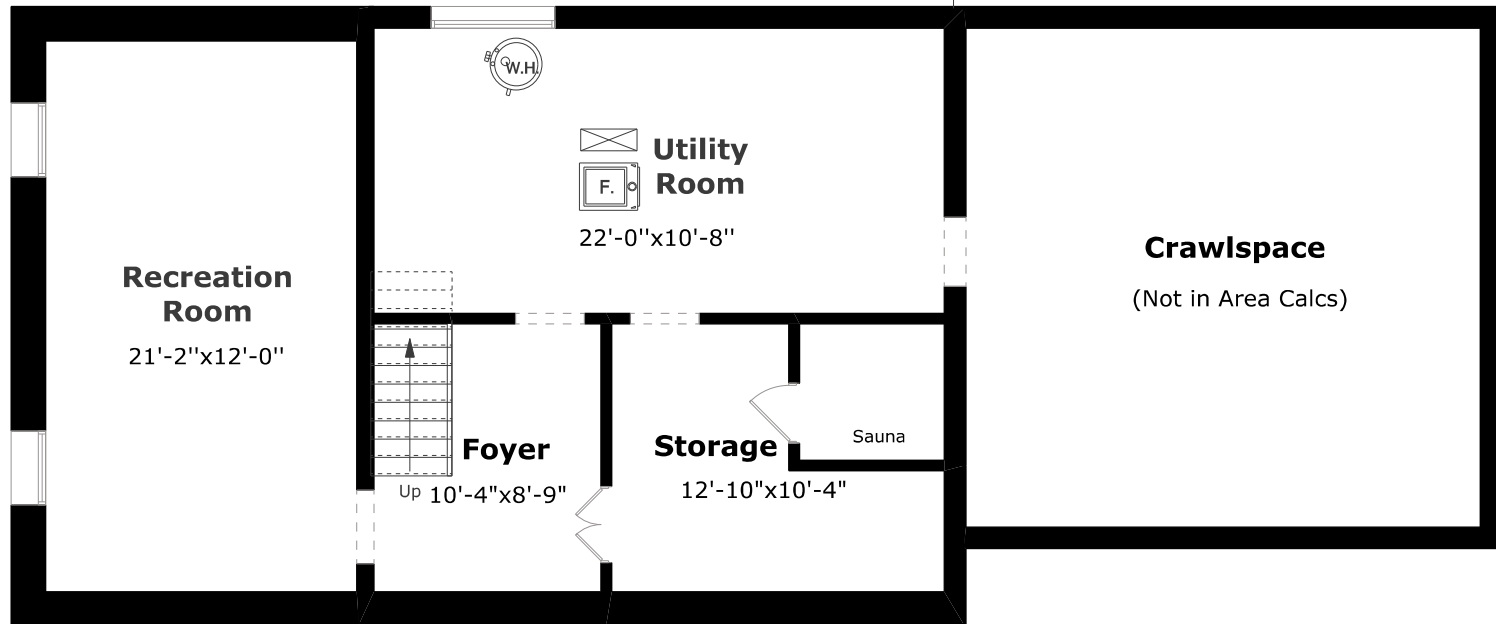
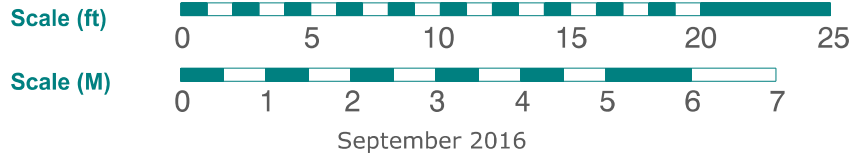
2nd Floor Plan

1,009.4 sq. ft.



Measurements may not be 100% accurate. Floor Plans provided for illustrative purposes only. Room sizes not used to calculate area.

1304 Hillhurst Avenue



Basement Plan

880.9 sq. ft.



Measurements may not be 100% accurate. Floor Plans provided for illustrative purposes only. Room sizes not used to calculate area.