

SCHIAVONE DIAMOND

ROYAL LePAGE
Royal LePage Real Estate
Services Ltd., Brokerage



School Information

Public

Falgarwood Elementary (JK - Gr 8)
1385 Gainsborough Drive
905-845-7478

Munn's Elementary (Fr. Imm. Gr 1 - 8)
1511 Sixth Line
905-844-9461

Iroquois Ridge Secondary (Gr 9 - 12) (Fr. Imm.)
1123 Glenashton Drive
905-845-0012

Catholic

St. Andrew Elementary (JK - Gr 8)
145 Millbank Drive
905-257-7102

St. Matthew Elementary (Ex. Fr. Imm. Gr 5 - 8)
1050 Nottinghill Gate
905-847-0088

Holy Trinity Secondary (Gr 9 - 12) (Fr. Imm.)
2420 Sixth Line
905-257-3534

For more information & pictures visit:
SchiavoneDiamond.com



Bill Schiavone

Broker

Tel 905.338.3737

Cell 416.999.6084

Fax. 905.338.7452

Bill@SchiavoneDiamond.com



Todd Pilatzke

Sales Representative

Tel 905.338.3737

Cell 905.330.5652

Fax. 905.338.7452

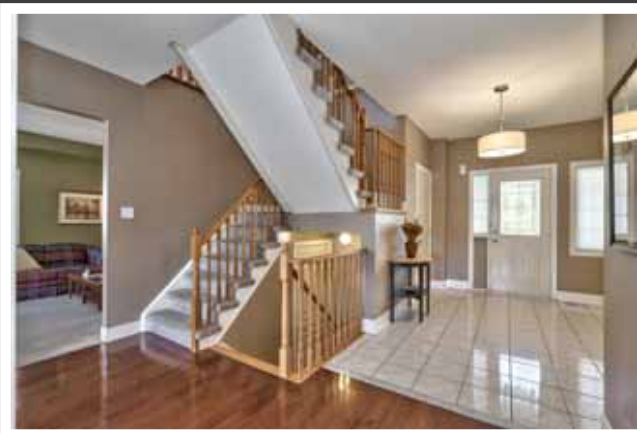
Todd@SchiavoneDiamond.com

SCHIAVONE DIAMOND

ROYAL LePAGE
Royal LePage Real Estate
Services Ltd., Brokerage

Welcome to...
2378 Woodridge Way





Main Level

Entry

Single door entry with sidelight window and window with front yard view, ceramic tile floor, double door coat closet, drum light fixture, bench seat, inside entry from garage, broadloom on stairs with oak handrail & pickets

Living Room 10'6 x 12'0

Combined with dining room, broadloom, windows with wide-slat blinds and side yard views

Dining Room 10'6 x 12'0

Combined with living room, broadloom, knee wall with decorative columns, antique iron chandelier

Kitchen 17'0 x 10'2

Renovated kitchen with hardwood floor, maple shaker-style soft-close cabinets, stainless steel bar hardware, glass tile backsplash, granite counters, breakfast bar, under-cabinet lighting, servery area with glass front cabinets, Samsung stainless steel fridge, Samsung stainless steel gas stove, Panasonic stainless steel over-the-range microwave, Samsung stainless steel built-in dishwasher, double stainless steel undermounted sink, brushed stainless steel faucet, pot lights, 2 pendant lights above peninsula, 2 windows with wide-slat blinds and side yard views

Breakfast 8'10 x 9'8

Hardwood floor, pantry cabinets, pot lights, sliding glass doors to rear deck

Family Room 14'0 x 15'9

Open to kitchen, hardwood floor, gas fireplace with white mantle, pot lights, 3 windows with wide-slat blinds and rear yard views

2pc Bath

Ceramic tile floor, pedestal sink, chrome faucet & fixtures

Bedroom Level

Master Bedroom 13'3 x 15'3

Broadloom, walk-in closet, His & Hers closets, ceiling fan, 3 windows with wide-slat blinds overlooking rear yard

5pc Ensuite Bath

Ceramic tile floor, white vanity with laminate counter and double sinks, chrome faucets, corner soaker tub with ceramic tile surround, separate shower with ceramic tile surround and rainfall shower head, window with wide-slat blinds overlooking rear yard

2nd Bedroom 12'7 x 16'7

Broadloom, cathedral ceiling, window seat, ceiling fan, 2 closets, 5 windows with wide-slat blinds overlooking front and side yard

4pc Ensuite Bath

Ceramic tile floor, white vanity with laminate counter, chrome faucet, tub/shower combination with ceramic tile surround, window with wide-slat blinds overlooking side yard

3rd Bedroom

Broadloom, double closet, window seat, ceiling fan, 3 windows with wide-slat blinds overlooking front yard

4th Bedroom

Broadloom, double closet, ceiling fan, window with wide-slat blinds overlooking side yard

5th Bedroom

Broadloom, 2 closets, ceiling fan, 2 windows with wide-slat blinds overlooking rear & side yards

4pc Bath

Ceramic tile floor, white vanity with laminate counter, chrome faucet, tub/shower combination with ceramic tile surround, window with wide-slat blinds overlooking side yard

Laundry Room

Ceramic tile floor, Frigidair washer & dryer, laundry sink & faucet, upper cabinets, shelving

Exterior & Additional Features

- Aggregate driveway with interlock stone walkway & front porch, double driveway & garage
- Fully fenced back yard, landscaped with gardens, interlock stone patio, BBQ deck with natural gas BBQ hook-up, in-ground 14 x 28 pool with fibre optic lighting system
- Full, unfinished basement with above-grade windows
- New roof (2016)
- Irrigation system - front and back yards