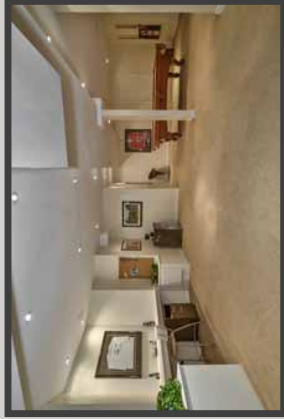


**SCHIAVONE
DIAMOND**

ROYAL LEPAGE
Royal LePage Real Estate
Services Ltd., Brokerage



School Information

Public

Maple Grove Elementary (JK - Gr 8)
288 Maple Grove Drive
905-844-9322

E.J. James Elementary (Fr. Imm. Gr 1 - 8)
338 Cairncroft Road
905-845-2015

Oakville Trafalgar Secondary (Gr 9 - 12) (Fr. Imm.)
1460 Devon Road
905-845-2875

Catholic

St. Vincent Elementary (JK - Gr 8)
1280 Brideside Drive
905-849-0777

St. Joseph Elementary (Fr. Imm. Gr 5 - 8)
477 Warminster Drive
905-827-4231

St. Thomas Aquinas Secondary (Gr 9 - 12) (Fr. Imm.)
124 Dorval Drive
905-842-9494

For more information & pictures visit:
SchiavoneDiamond.com



Bill Schiavone
Broker

Tel 905.338.3737
Cell 416.999.6084
Fax. 905.338.7452

Bill@SchiavoneDiamond.com



Steve Diamond
Sales Representative

Tel 905.338.3737
Cell 416.566.9496
Fax. 905.338.7452

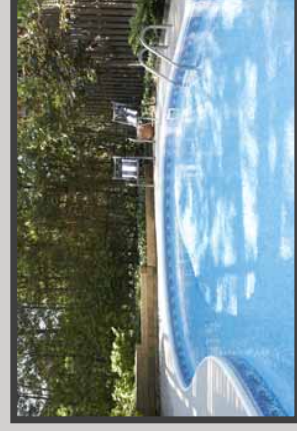
Steve@SchiavoneDiamond.com

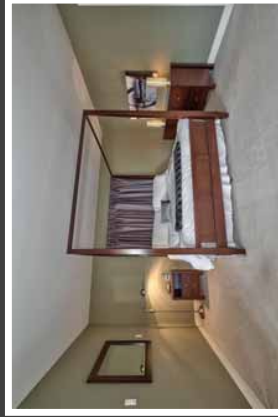
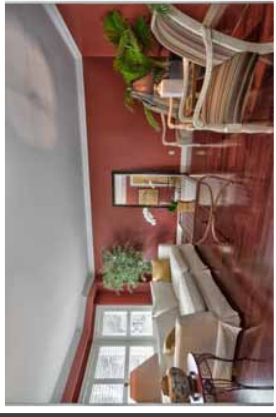
ALL information contained herein has been supplied by the Seller to the best of his knowledge and while deemed accurate is NOT guaranteed by Royal LePage Real Estate Services Ltd., Brokerage. ALL measurements are approximate.

**SCHIAVONE
DIAMOND**

ROYAL LEPAGE
Royal LePage Real Estate
Services Ltd., Brokerage

Welcome to...
141 Cheverie Street





Main Level

Entry

Double door entry with 2 sidelight windows, open to 2nd floor, dark-stained hardwood floor, double door coat closet, crown moulding, hardwood stairs with white risers & pickets and broodroom runner, oiled bronze chandelier

Living Room 129 x 186

Dark-stained hardwood floor, crown moulding, bay window with shutters and front yard view

Dining Room 113 x 12'10

Dark-stained hardwood floor, crown moulding, chair rail, ceiling medallion, wrought iron chandelier, bay window with drapes & rod and side yard view

Kitchen 177 x 180

Cork floor, maple cabinetry with pantry cabinets, granite countertops, undermounted double stainless steel sink, brushed stainless steel faucet, kitchenaid stainless steel fridge and smooth-top stove, Maytag stainless steel built-in dishwasher, built-in stainless steel wine fridge, stainless steel backsplash behind cooktop, pot lights, corner windows with wide-slat blinds and rear yard view, breakfast area has sliding glass patio doors to rear deck, as well as 2 windows with wide-slat blinds

Family Room 129 x 17'10

Dark-stained hardwood floor, wood-burning fireplace with brick surround, built-in bookshelves and cabinets, crown moulding, pot lights, sliding glass patio doors to rear deck

Den/Office 123 x 13'0

Dark-stained hardwood floor, window with drapes & rod and side yard view

Mudroom/Laundry Room

Cork floor, LG front loading washer & dryer, sink cabinet with faucet, upper cabinets, storage closet, inside entry from garage, window with side yard view

2pr. Bath

Cork floor, espresso vanity with glass vessel sink, chrome faucet, framed mirror, pebbled glass window with side yard view

Bedroom Level

Master Bedroom 198 x 20'3

Broadloom, walk-in closet with built-ins, 3 windows with wide-slat blinds overlooking rear yard

4pr. Ensuite Bath

Tile floor, white vanity with integrated sink and countertop, framed mirror, soaker tub with tile surround, glass shower with tile surround, linen closet, crystal light fixture, pot lights, 2 pebbled glass corner windows overlooking rear and side yard

2nd Bedroom 126 x 10'11

Laminate floor, double door closet, window with shutters overlooking front yard

3rd Bedroom 129 x 9'2

Laminate floor, ceiling fan, double door closet, window with shutters overlooking front yard

4th Bedroom 115 x 12'1

Broadloom, ceiling fan, double door closet, window with shutters overlooking side yard

4pr. Bath

Tile floor, white vanity with integrated double sinks and countertop, 2 oval mirrors, extra large shower with subway tile surround and shampoo shelf, pot lights, frosted glass window overlooking side yard

Basement

Recreation Room 191 x 22'0

Berber broadloom, pot lights, study/craft area with built-in desk, pool table area (201 x 220), cold cellar, under stairs storage, large storage room/work room (128 x 32'10)

2pr. Bath

Tile floor, pedestal sink, chrome faucet and fixtures, wainscoting, window with blind

Exterior & Additional Features

- Large family home with lots of storage, located at the end of a quiet cul-de-sac
- Double driveway, aggregate stone walkway and porch, landscaped front yard with mature trees
- Rear yard with large wood deck, overlooking in-ground saltwater pool, interlock stone patio, raised garden beds, mature trees, hot tub ("as is")