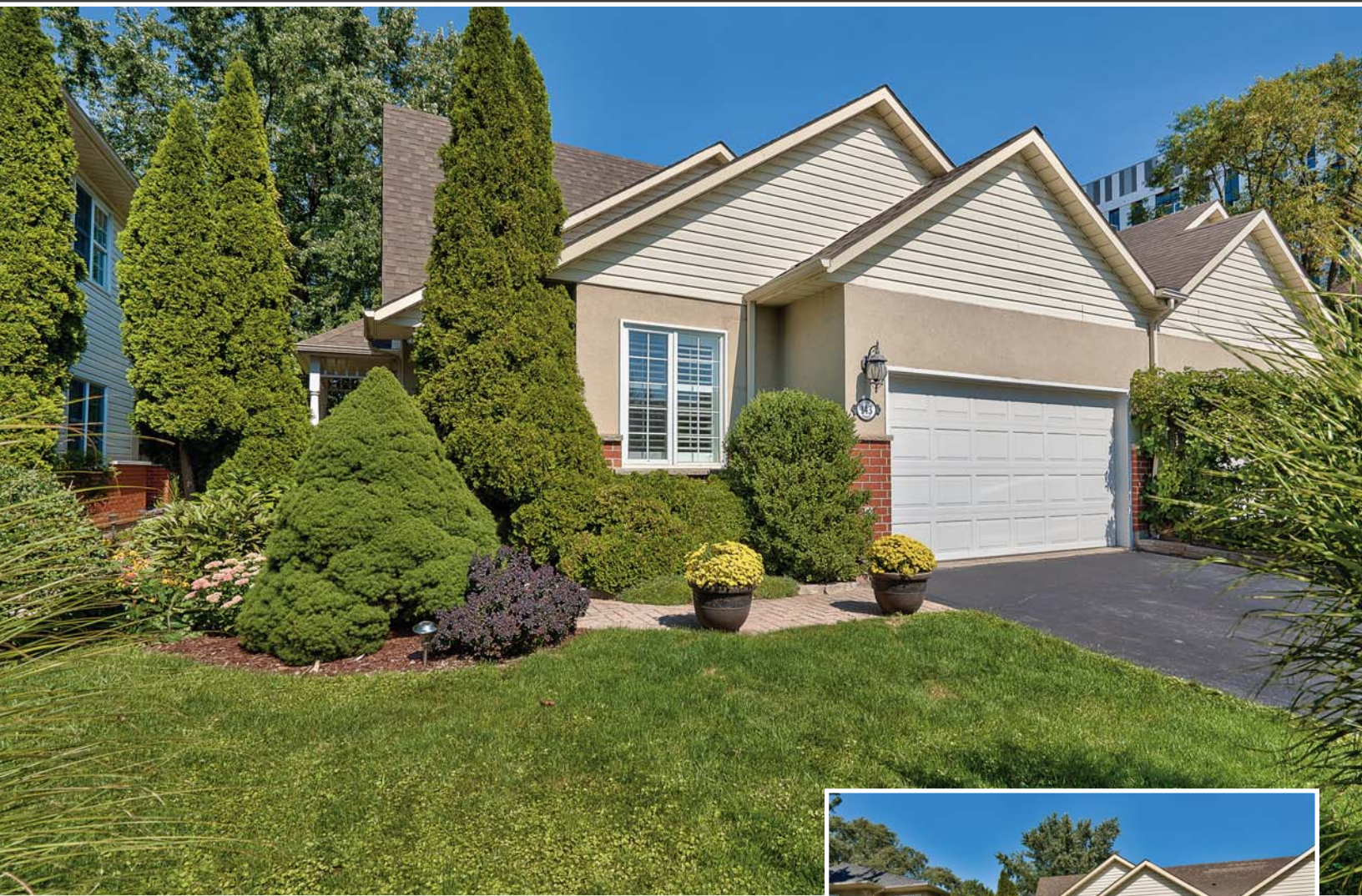


143 East River Street

Oakville, Ontario



SCHIAVONE
DIAMOND

ROYAL LEPAGE

Royal LePage Real Estate Services Ltd., Brokerage





Welcome Home



Gourmet Kitchen



Master Suite





Finished Basement



Features

143 East River Street

MAIN LEVEL

Entry
Single door entry with sidelight window and shutters, tile floor, double mirrored sliding door closet, pendant light fixture with ceiling medallion, crown moulding, broadloom on stairs with dark-stained hardwood railing and white balusters, sonotube in stairwell

Living Room/Dining Room 21’7 x 13’6
Cathedral ceiling with skylight and sonotube, hardwood floor, corner gas fireplace with tile surround and white mantle, crown moulding, pendant light with ceiling medallion, windows with shutters and side yard view, double garden doors with shutters lead to rear deck

Kitchen 12’2 x 10’3
Hardwood floor, white cabinetry with granite counters, double undermounted Kohler sink, brushed stainless steel faucet, subway tile backsplash, Whirlpool stainless steel fridge, Whirlpool stainless steel smooth-top stove, Whirlpool, built-in above-the-range microwave, Whirlpool stainless steel built-in dishwasher, crown moulding, sink window with shutters and front yard view

Breakfast Area 9’0 x 8’8
Hardwood floor, built-in china cabinet with glass fronts, pendant light fixture with ceiling medallion, large window and bay window with shutters and front yard views

Master Bedroom 15’7 x 10’8
Cathedral ceiling with skylight, hardwood floor, walk-in closet, double garden doors with shutters to rear deck

4pc Ensuite Bath
Tile floor, white shaker-style vanity with integrated sink & counter, brushed stainless steel faucet, framed mirror, jetted soaker tub with tile surround, separate corner shower with glass block detail and tile surround, medicine cabinet, pendant light fixture with ceiling medallion

2pc Bath
Hardwood floor, white vanity with laminate counter, chrome faucet, framed mirror, crown moulding

Laundry Room 11’8 x 4’11
Tile floor, inside entry from garage, upper cabinetry, crown moulding

SECOND LEVEL

2nd Bedroom 13’7 x 11’4
Broadloom, double door closet, crown moulding, window with shutters overlooking rear yard

3rd Bedroom 13’1 x 11’4
Broadloom, double door closet, crown moulding, ceiling fan, 2 windows with shutters overlooking rear and side yards

4pc Bath
Tile floor, white vanity with laminate counter, chrome faucet, framed mirror, tub/shower combination with tile surround, crown moulding, window

BASEMENT LEVEL

Recreation Room 29’7 x 19’11
Berber broadloom, gas fireplace with marble surround and wood mantle, 2 windows

Den/Bedroom 19’4 x 15’9
Double door entry, berber broadloom, closet

3pc Bath
Laminate floor, pedestal sink, chrome faucet and fixtures, separate shower with tile surround

Utility Room/Storage 18’11 x 11’6

EXTERIOR & ADDITIONAL FEATURES

Brick and vinyl siding exterior, completely landscaped with perennials, trees and shrubs, double car garage, double driveway with parking for 4 cars, interlock stone walkway to covered front porch

- Private, fully fenced rear yard, multi-level wood decks, retractable awning, storage shed, hot tub
- Located steps to the lake and Bronte Marina shops and restaurants
 - Beautifully maintained, pride of ownership
 - Main floor master suite

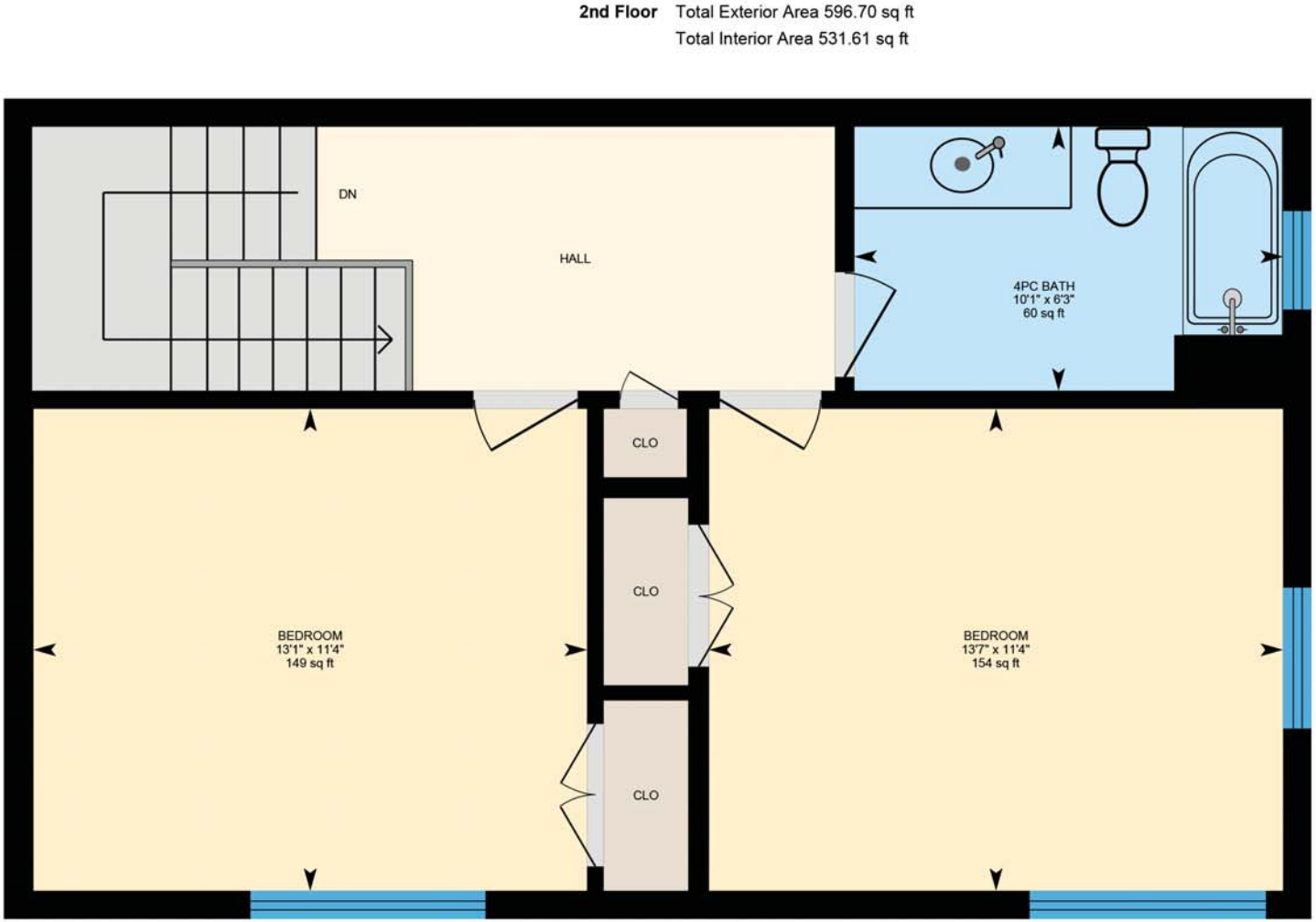
SCHOOL INFORMATION

- Public**
- Eastview Elementary (JK – Gr 8)**
2266 Hixon Street 905-827-1541
- Pine Grove Elementary (Fr. Imm. Gr 2 – 8)**
529 Fourth Line 905-844-6371
- T. A. Blakelock Secondary (Gr 9 – 12) (Fr. Imm.)**
1160 Rebecca Street 905-827-1158
- Catholic**
- St. Dominic Elementary (JK – Gr 8)**
2405 Rebecca Street 905-827-4401
- St. Nicholas Elementary (Fr. Imm. Gr 5 – 8)**
477 Warminster Drive 905-827-4231
- St. Thomas Aquinas Secondary (Gr. 9 – 12) (Fr. Imm.)**
124 Dorval Drive 905-842-9494

Main Floor Plans



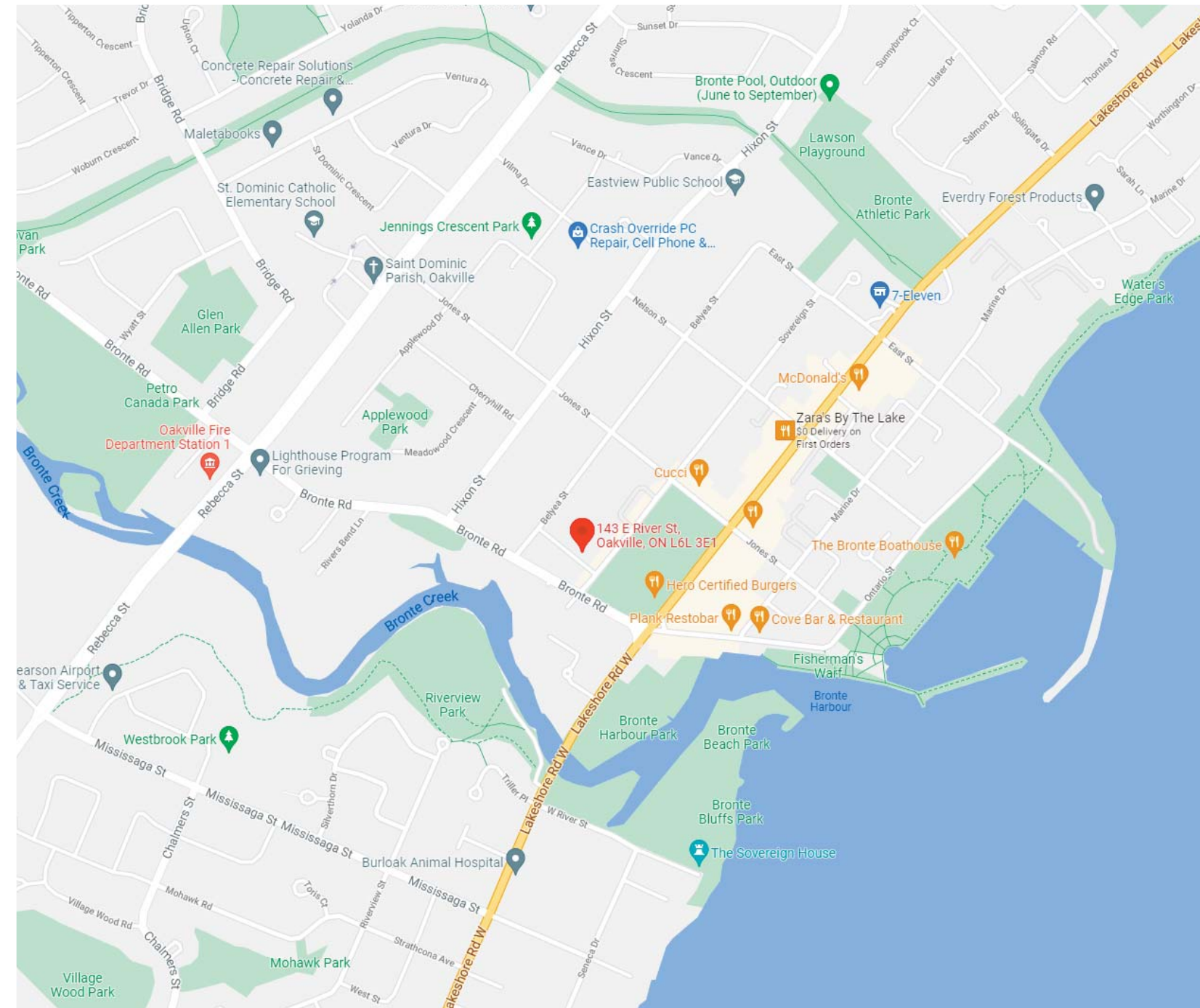
Second Floor Plans



Basement Floor Plans

Map

Main Floor Total Exterior Area 1213.41 sq ft
Total Interior Area 1105.93 sq ft



Expansive Patio





For more information & pictures visit:
SchiavoneDiamond.com



Julia Avery
Sales Representative

Tel 905.338.3737

Cell 416.576.3471

Fax. 905.338.7351

Julia@SchiavoneDiamond.com



Bill Schiavone
Broker

Tel 905.338.3737

Cell 416.999.6084

Fax 905.338.7351

Bill@SchiavoneDiamond.com