

# SCHIAVONE DIAMOND

**ROYAL LePAGE**  
Royal LePage Real Estate  
Services Ltd., Brokerage



## School Information

### Public

**Oakwood Elementary (JK - Gr 5)**  
357 Bartos Drive  
905-845-0412

**W.H. Morden Elementary (Gr 6 - 8)**  
180 Morden Road  
905-844-9616

**Pine Grove Elementary (Fr. Imm. Gr 2 - 8)**  
529 Fourth Line  
905-844-6371

**Thomas A. Blakelock Secondary (Gr 9 - 12)  
(Fr. Imm.)**  
1160 Rebecca Street  
905-827-1158

### Catholic

**St. Nicholas Elementary (JK - Gr 8) (Ex. French Gr 5 - 8)**  
477 Warminster Drive  
905-827-4231

**St. Thomas Aquinas Secondary (Gr 9 - 12)**  
124 Dorval Drive  
905-842-9494

For more information & pictures visit:  
**SchiavoneDiamond.com**



**Bill Schiavone**

Broker

**Tel 905.338.3737**

Cell 416.999.6084

Fax 905.338.7351

Bill@SchiavoneDiamond.com



**Brooke Reader**

Sales Representative

**Tel 905.338.3737**

Cell 905.334.0462

Fax 905.338.7351

Brooke@SchiavoneDiamond.com

# SCHIAVONE DIAMOND

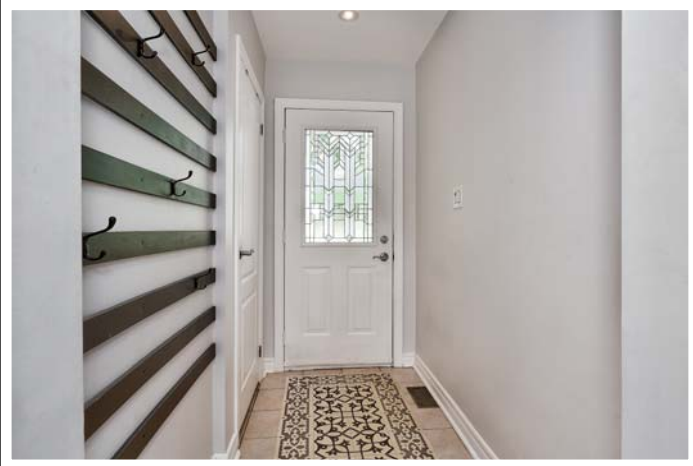
**ROYAL LePAGE**  
Royal LePage Real Estate  
Services Ltd., Brokerage

Welcome to...  
**68 Glenmanor Drive**



ALL information contained herein has been supplied by the Seller to the best of his knowledge and while deemed accurate is NOT guaranteed by Royal LePage Real Estate Services Ltd., Brokerage. ALL measurements are approximate.





## Main Level

### Entry

Single door entry with decorative window insert, tile floor, coat closet, pot lights

### Living Room 18'7 x 11'1

Hardwood floor, crown moulding, gas fireplace with tile hearth and white mantle, bay window with wide-slat blinds and front yard view

### Dining Room 12'11 x 10'4

Hardwood floor, drum light pendant, window with wide-slat blinds with rear yard view, sliding glass patio doors with wide-slat blinds leading to rear deck

### Kitchen 10'5 x 9'6

Hardwood floor, white cabinets, under-cabinet lighting, granite counters, tumbled stone tile backsplash, undermounted double stainless steel sink with brushed stainless steel faucet, stainless steel KitchenAid fridge, stainless steel Bosch gas stove, stainless steel Maytag above-the-range built in microwave, built-in Bosch dishwasher, crown moulding, pot lights, 3 pendant lights above peninsula, window with rear yard view

### Master Bedroom 12'9 x 10'4

Hardwood floor, double door closet with built-in organizers, drum light fixture, window with wide-slat blinds and front yard view

### 2nd Bedroom 9'10 x 8'11

Hardwood floor, closet with built-in organizers, brushed stainless steel light fixture, window with wide-slat blinds and front yard view

### 3rd Bedroom 10'6 x 8'7

Hardwood floor, closet, drum light fixture, window with wide-slat blinds and side yard view

### 4pc Bath

Heated tile floor, white vanity with granite counter and undermounted sink, brushed stainless steel faucet, soaker tub with tile surround, separate shower with tile surround and glass door

## Basement Level

### 4th Bedroom 17'9 x 10'9

Laminate floor, built-in bookshelves and desk drawers, large closet with double doors, pot lights, 2 above-grade windows with wide-slat blinds

### Recreation Room 27'8 x 13'6

Laminate floor, gas fireplace with tile hearth and white mantle, pot lights

### Bonus Room 15'9 x 12'9

Laminate floor, track lighting, above-grade window

### 3pc Bath

Tile floor, espresso vanity with integrated sink and counter, framed mirror, large shower with tile surround and glass door, pot lights

### Laundry Room 12'4 x 10'5

Tile floor, Samsung front loading washer & dryer, laundry sink and faucet, storage cabinets, folding counter, hanging rod, above grade window with blinds

## Exterior & Additional Features

Attractive painted brick and stucco exterior, single car garage, single driveway fits 3 cars, interlock stone walkway, tiled porch with railing, landscaped with perennials and mature trees

Private yard with garden beds and mature trees, wood deck with railing and privacy screen, wooden deck at side, garden shed, natural gas hookup for BBQ, separate entry to garage

- Quiet neighbourhood close to trendy Kerr Village and downtown Oakville
- Updated kitchen, bathrooms, interior doors, windows
- Main floor linen closet
- Garbage/recycling bin corral at side of house
- CVAC
- Hot Water Tank is owned
- Lot Size: 57' x 104.32' x 104.80' x 92.72'
- 2021 Taxes: \$5,873