

SCHIAVONE DIAMOND



School Information

Public

New Central Elementary (JK – Gr 6)
133 Balsam Drive 905-844-3081

Maple Grove Elementary (Gr 7 – 8)
288 Maple Grove Drive 905-844-9322

E.J. James Elementary (Fr. Imm. Gr 2 – 8)
338 Cairncroft Road 905-845-2015

Oakville Trafalgar Secondary (Gr 9 – 12) (Fr. Imm.)
1460 Devon Road 905-845-2875

Catholic

St. Vincent Elementary (JK – Gr 8)
1280 Braeside Drive 905-849-0777

St. Nicholas Elementary (Fr. Imm. Gr 5 – 8)
477 Warminster Drive 905-827-4231

St. Thomas Aquinas Secondary (Gr 9 – 12) (Fr. Imm.)
124 Dorval Drive 905-842-9494

For more information & pictures visit:
SchiavoneDiamond.com



Bill Schiavone
Broker

Tel 905.338.3737

Cell 416.999.6084

Fax 905.338.7351

Bill@SchiavoneDiamond.com



Julia Avery
Sales Representative

Tel 905.338.3737

Cell 416.576.3471

Fax 905.338.7351

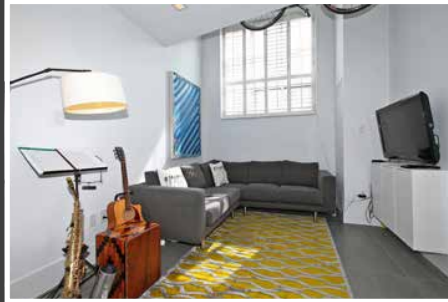
Julia@SchiavoneDiamond.com

SCHIAVONE DIAMOND



Welcome to...
TH2 – 221 Robinson Street





Main Level

Front Entry

Single door entry with transom window, tile floor, concrete accent wall, double door coat closet, industrial style open staircase with wood and steel treads, steel handrail and glass panels, complimentary wood accent wall

Living Room 13'4 x 12'3

Open to second level, tile floor, 2 large windows with shutters, pot lights

Dining Room 16'7 x 15'4

Open to second level, steel spotlight chandelier, ceiling fan

Kitchen 10'9 x 10'1

Tile floor, white shaker cabinets with stainless steel hardware, glass tile backsplash, quartz countertops, double stainless steel sink with brushed stainless steel pull-out faucet, stainless steel fridge, stainless steel smooth-top slide-in stove, integrated built-in dishwasher, microwave shelf, breakfast bar, pantry, pot lights, under-cabinet lighting

2pc Bath

Tile floor, pedestal sink with brushed stainless steel faucet, framed mirror

Family Room 11'3 x 9'9

Tile floor, large window with shutters, floating storage cabinet

Primary Bedroom 16'9 x 9'11

Double door entry, tile floor, double door closet, crown moulding

4pc Bath

Tile floor, white vanity with quartz counter and vessel sink, chrome faucet and fixtures, framed mirror, separate glass shower with rainfall shower head, shampoo shelf and tile surround, deep soaker tub with tile surround

Upper Level

2nd Bedroom 17'4 x 9'9

Polished concrete floor, raised sitting area overlooking living/dining area, double door closet,

Loft/Office 18'4 x 7'10

Polished concrete floor, built-in storage closets, built-in desk area, glass panels overlooking living/dining room, pot lights

4pc Bath

Marble tile floor, white vanity with quartz countertop and vessel sink, chrome faucet and fixtures, medicine cabinet, tub/shower combination with marble tile surround

Laundry

In-suite laundry next to kitchen

Exterior & Additional Features

- Private street-front entry
- 2nd entry from lobby
- Approximately 1600 square feet, renovated in an industrial style
- 2 bedrooms, 2.5 baths
- 20 foot ceilings in living and dining room
- 1 owned parking space
- Storage locker included
- 2021 Taxes: \$5,303