

259 Burgundy Drive Oakville, Ontario



SCHIAVONE
DIAMOND

ROYAL LEPAGE
Royal LePage Real Estate Services Ltd., Brokerage



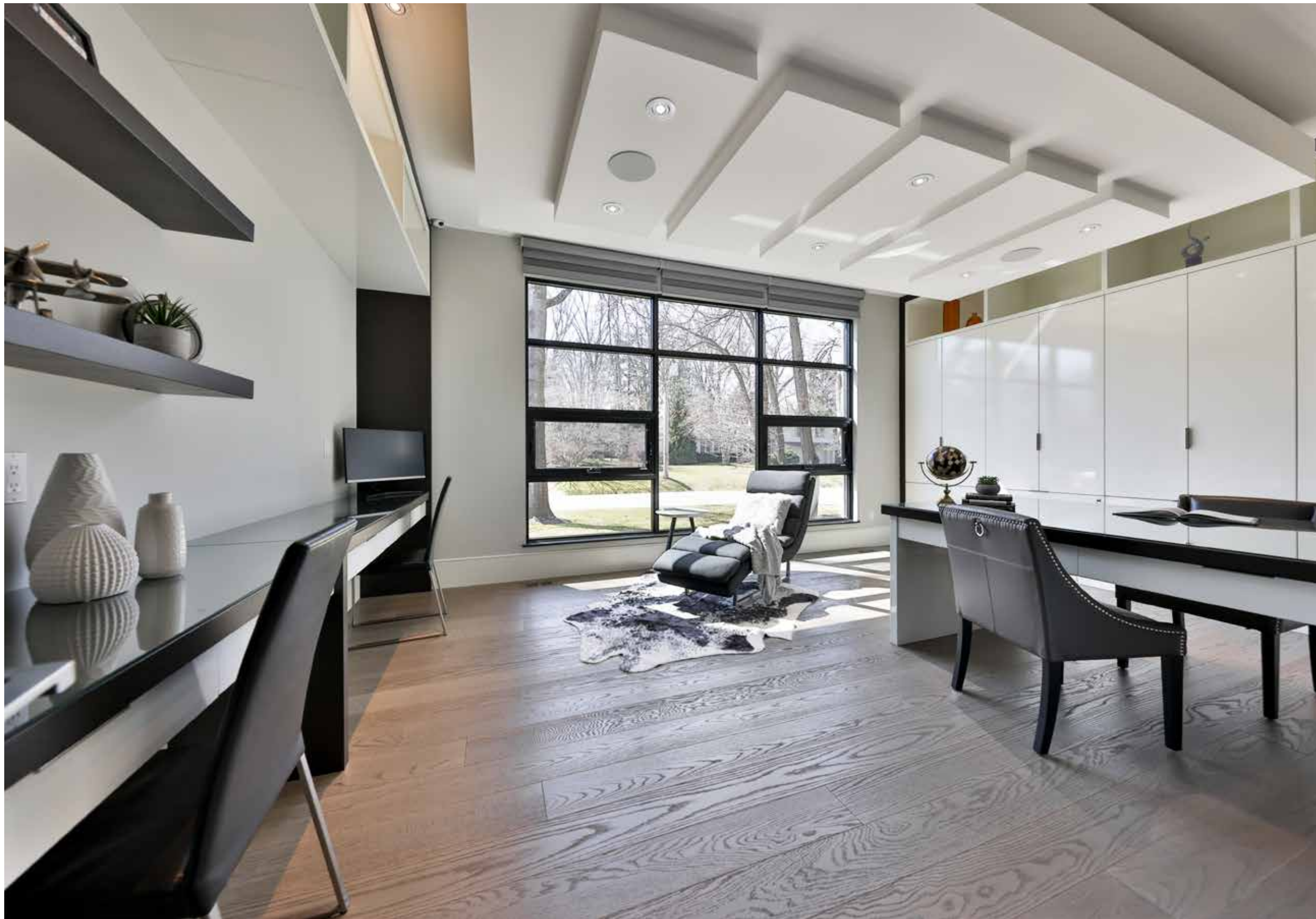
Welcome Home





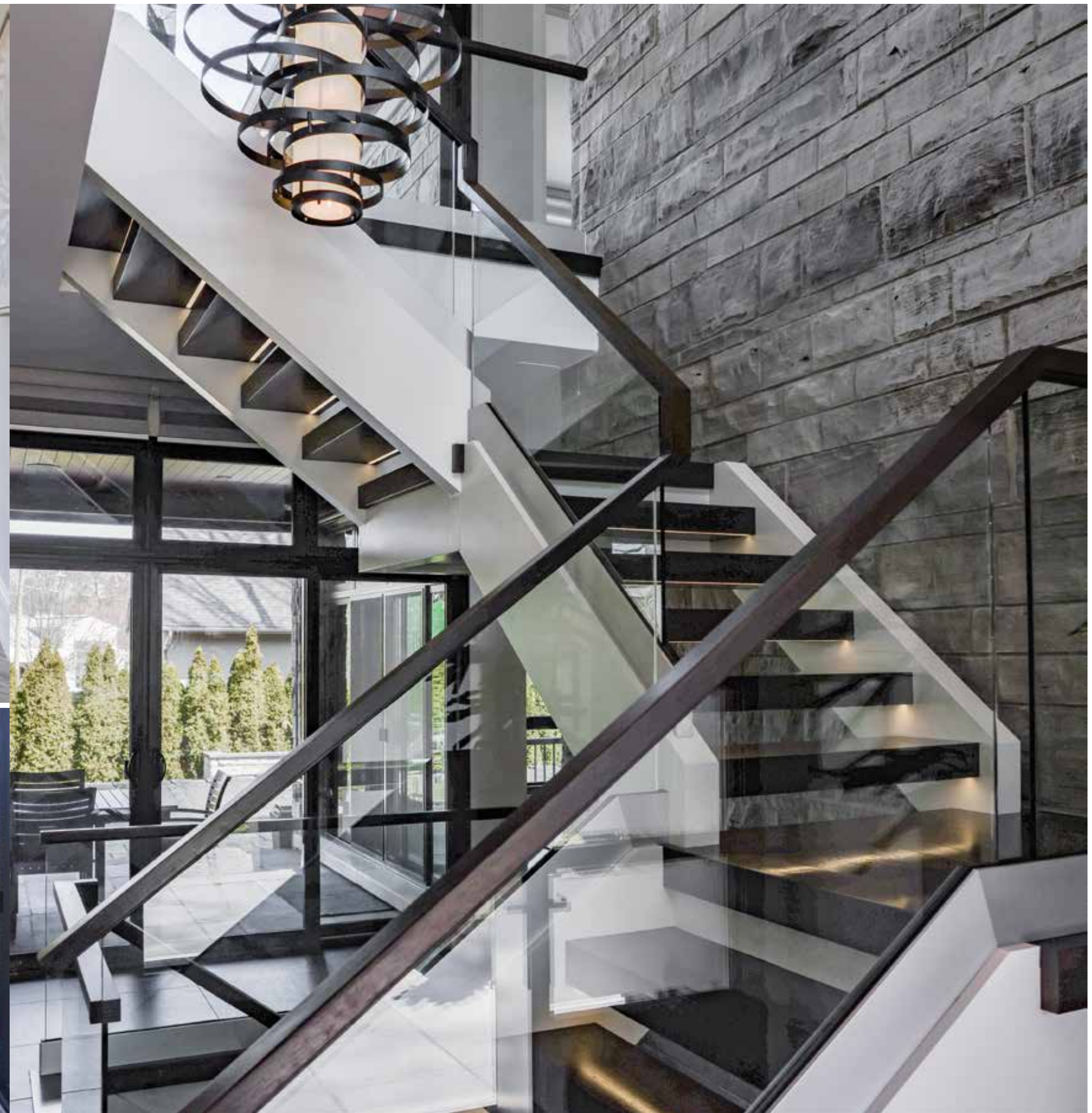
Gather Together





Luxurious Living





Upper
Level



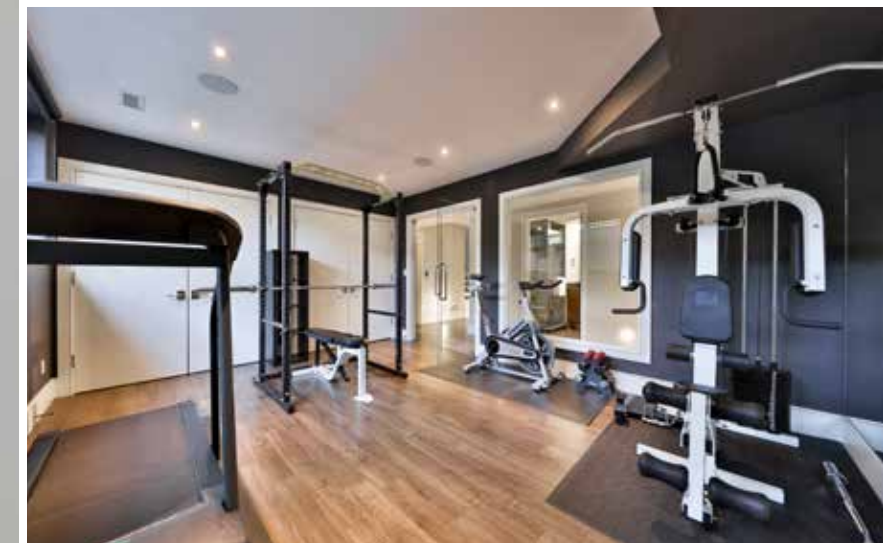








Great for Entertaining!





Floor Plans

259 Burgundy Drive

Main Floor Finished Area 2638.09 sq ft



2nd Floor Finished Area 2399.44 sq ft



Basement (Below Grade) Finished Area 2993.54 sq ft
Unfinished Area 68.77 sq ft



* Floor plans may not be exactly as shown

Features

259 Burgundy Drive

MAIN LEVEL

Foyer 15'5 X 7'6

Custom solid white oak double door entry with frosted glass sidelights and transom windows, 3 storey staircase with stone accent wall, open white oak treads with inlaid LED lighting, white oak handrail and glass panels, tile floor, walk-in coat closet

Living Room 27'6 x 22'11

Hardwood floor, linear gas fireplace with stainless steel surround and quartzite stone accent wall, custom built-in media cabinets, large corner windows with side yard views, suspended ceiling with built-in sound system, 2 sets of glass doors to rear patio allow for indoor/outdoor entertaining – all with custom automated blinds

Kitchen 15'3 x 15'0

Custom euro-style white cabinetry with quartz counters and matching slab backsplash, tile floor, under-cabinet lighting, undermounted sink with integrated strainer, ceramic bowls and cutting board accessories, huge centre island with quartz counter with attached stainless steel breakfast bar and stainless steel apron front sink, Gaggenau stainless steel 30" fridge & 30" freezer, Gaggenau built-in wall oven, combi-steam oven and warming drawer, Gaggenau built-in 36" 7-burner induction cooktop with knobs integrated into cabinetry, Gaggenau stainless steel hood vent, Gaggenau built-in stainless steel dishwasher, Miele built-in coffee system & warming drawer for cups, Miele built-in wine cooler, brushed stainless steel pot filler faucet, stainless steel ceiling accent with modern orb light fixture above island

Servery 9'1 x 8'4

Custom euro-style cabinetry with quartz counter and matching slab backsplash, tile floor, under-cabinet lighting, undermounted stainless steel sink with faucet,

Miele built-in microwave, Marvel built-in beverage fridge, Miele built-in stainless steel dishwasher, pocket door, sink window overlooking rear yard

Dining Room 20'5 X 12'7

Tile floor, custom built-in cabinetry, suspended ceiling with linear chandelier, floor-to-ceiling window with rear yard view and glass doors to rear patio – all with custom automated blinds

Office 20'7 X 15'5

Hardwood floor, custom built-in wall-to-wall cabinetry, custom built-in desk and workstations, suspended ceiling, large window with front yard view and automated blind

2pc Bath

Heated tile floor, custom vanity with vessel sink and chrome waterfall faucet, display niche

Mudroom 23'8 X 15'5

Heated tile floor, 2 double door coat closets, broom closet, 2 double door storage closets, inside entry from garage, separate stairs to basement, entrance to back yard, pocket door to separate from main living areas

SECOND LEVEL

Primary Bedroom 21'1 x 13'6

Hardwood floor, linear gas fireplace with stone tile surround, custom built-in bed, headboard & night tables, custom built-in wardrobes, floor-to-ceiling corner windows overlooking side yard with custom automated blinds, walk-in closet with custom built-ins and fire proof safe

6pc Ensuite Bath

Heated tile floor, custom floating vanity with quartz counter, double undermounted sinks with chrome faucets and fixtures, wall-mounted toilet and bidet, heated towel rack, large jetted soaker tub with quartz skirting, quartz shampoo niche and tile surround, separate glass shower with multiple sprays and tile surround

2nd Bedroom 20'6 x 12'9

Hardwood floor, custom built-in bed, headboard with lighting and night tables, display shelving with lighting, built-in floating desk, walk-thru closet with custom built-ins and fire proof safe, large window overlooking rear yard with custom blinds

4pc Ensuite Bath

Heated tile floor, custom vanity & makeup area with quartz counter, undermounted sink with chrome faucet and fixtures, built-in medicine cabinet, heated towel rack, bidet, glass shower with rainfall showerhead and tile surround, pocket door

3rd Bedroom 20'5 x 13'4

Hardwood floor, custom built-in bed, headboard with lighting and night tables, display shelving, custom built-in floating desk, walk-in closet with custom built-ins, large window overlooking front yard with custom blinds

4pc Ensuite Bath

Heated tile floor, custom vanity with quartz counter, undermounted sink with chrome faucet and fixtures, custom built-in linen cabinet, heated towel rack, bidet, glass shower with rainfall showerhead and tile surround

4th Bedroom 18'4 x 15'3

Hardwood floor, custom built-in bed, headboard with lighting and night tables, display shelves, built-in cabinet, walk-in closet with custom built-ins and fire proof safe, large window overlooking front yard with custom blinds

3pc Ensuite Bath

Heated tile floor, custom vanity with quartz counter, undermounted sink with chrome faucet and fixtures, heated towel rack, glass shower with rainfall showerhead and tile surround

Laundry Room 11'10 X 9'11

Tile floor, custom cabinetry, tile backsplash, undermounted stainless steel sink with faucet, quartz counters, hanging rod, built-in ironing board, front loading Whirlpool washer & dryer

LOWER LEVEL

Family Room 20'9 x 15'5

Heated hardwood floor, custom built-in media cabinetry, linear gas fireplace with Maui quartzite stone surround, recessed LED perimeter lighting

Wet Bar 11'8 x 9'1

Heated hardwood floor, custom cabinetry, quartz counters and backsplash, undermounted double sink with brushed stainless steel faucet, quartz sit-up bar, built-in Marvel beverage fridge, KitchenAid stainless steel built-in dishwasher

Recreation Room 20'1 x 15'0

Heated hardwood floor, custom built-in table

Features

259 Burgundy Drive

5th Bedroom 14'11 x 12'7

Heated hardwood floor, double door closet, access to storage room

Gym 17'5 x 12'7

Heated hardwood floor, double door closet, access to storage room

Sauna

Wood lined with bench seating, timer and automated heat

Wine Cellar 12'5 x 10'3

Heated hardwood floor, double door closet, access to storage room

Laundry Room 14'7 x 7'4

Heated hardwood floor, double door closet, access to storage room

3pc Bath

Heated tile floor, custom vanity with quartz counter, undermounted sink with chrome faucet and fixtures, glass shower with rainfall showerhead and tile surround

Refrigerated Cold Room 7'5 X 5'1

Storage Room 17'7 x 11'2

Storage Room 10'1 x 9'6

Utility Room 14'2 x 4'10

EXTERIOR & ADDITIONAL FEATURES

One-of-a-kind custom built contemporary home built by Neven Custom Homes, Owen Sound limestone ledge rock natural stone cut on site, cedar soffits with pot lights, square cut flagstone walkways and porch with aggregate accents, double car garage with cabinetry, epoxy floor and wash sink, double driveway with parking for 8 cars, large mature trees, foundation plantings in raised garden beds, irrigation system

Rear covered porch with square-cut flagstone, natural gas fireplace with limestone surround and retractable automated screens (connected to Control4), outdoor kitchen with granite counter and built-in gas grill, outdoor built-in speakers, walk-up from basement, 32' x 17' inground saltwater pool with waterfall, hot tub, garden beds with easy care foundation plantings including cedars, yews and hostas, irrigation system

- Spacious entry areas and landings on all levels
- 10' ceilings throughout main level
- Architectural use of suspended ceilings throughout main level
- Custom-designed double white oak entry doors
- 3/4" white oak floors throughout
- Radiant heat flooring in lower level
- Extensive pot lights and custom modern light fixtures
- Upper hallway with hardwood floors and entry to upper balcony overlooking rear yard
- Inline Fibreglass energy efficient windows resist swelling, rotting and warping
- Generac generator - automatic start in power outage
- Control4 smart home automation system with 6 exterior security cameras
- Upgraded batt, spray and wool insulation
- Large basement windows with natural stone window wells
- 2 separate sump pumps with generator back up
- Mechanical room in basement – impeccably maintained and clearly labelled

SCHOOL INFORMATION

Public

New Central Elementary (JK – Gr 6)

133 Balsam Drive 905-844-3081

Maple Grove Elementary (Gr 7 – 8)

288 Maple Grove Drive 905-844-9322

E.J. James Elementary (Fr. Imm. Gr 2 – 8)

338 Cairncroft Road 905-845-2015

Oakville Trafalgar Secondary (Gr 9 – 12) (Fr. Imm.)

1460 Devon Road 905-845-2875

Catholic

St. Vincent Elementary (JK – Gr 8)

1280 Braeside Drive 905-849-0777

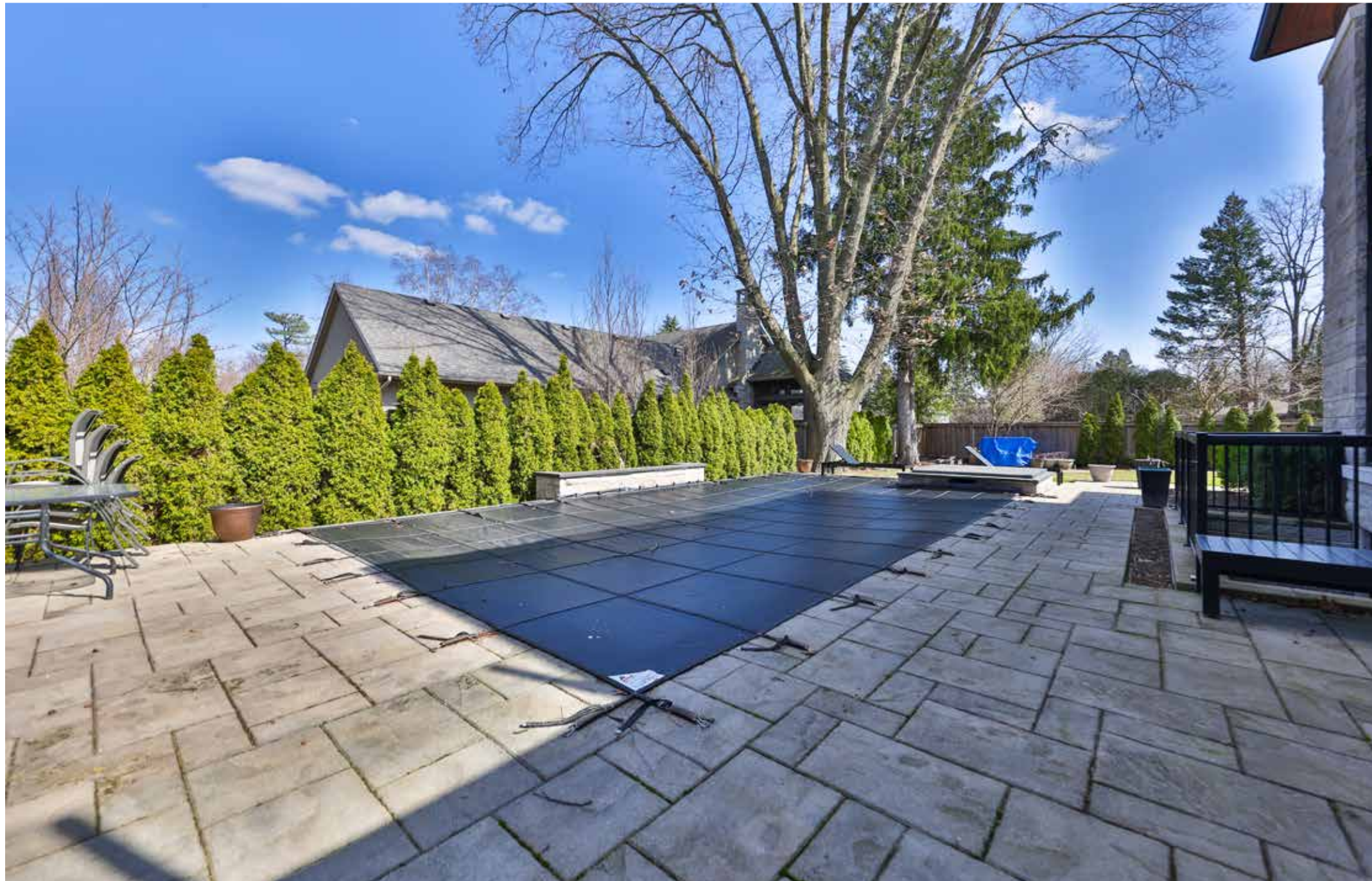
St. Nicholas Elementary (Ex. Fr. Gr 5 – 8)

477 Warminster Drive 905-827-4231

St. Thomas Aquinas Secondary (Gr 9 – 12) (Ex. Fr.)

124 Dorval Drive 905-842-9494

Backyard Retreat





For more information & pictures visit:
SchiavoneDiamond.com



Bill Schiavone

Broker

Tel 905.338.3737

Cell 416.999.6084

Fax 905.338.7351

Bill@SchiavoneDiamond.com



Steve Diamond

Sales Representative

Tel 905.338.3737

Cell 416.566.9496

Fax 905.338.7351

Steve@SchiavoneDiamond.com

ALL information contained herein has been supplied by the Seller to the best of their knowledge and while deemed accurate is **NOT** guaranteed by Royal LePage Real Estate Services Ltd., Brokerage. ALL measurements are approximate.