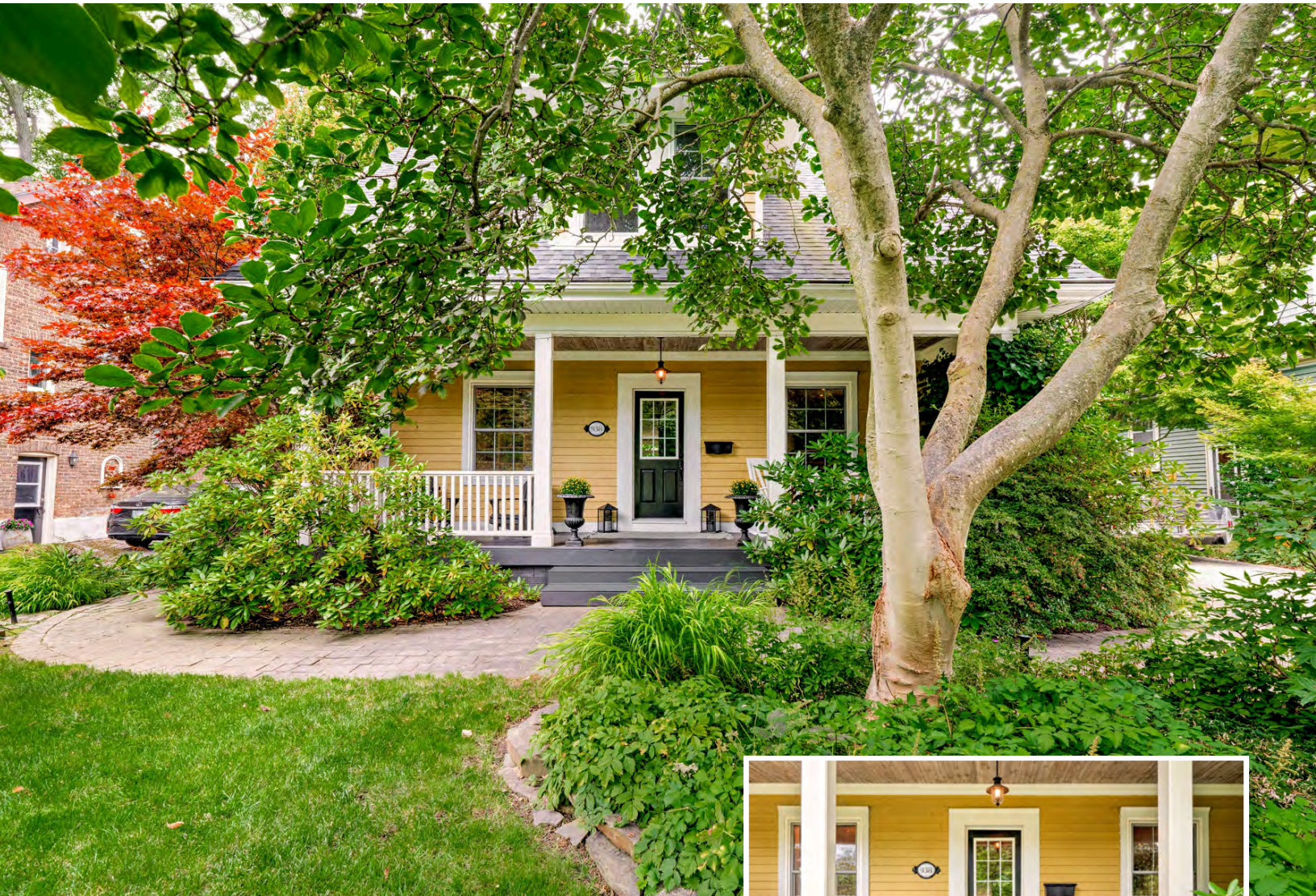


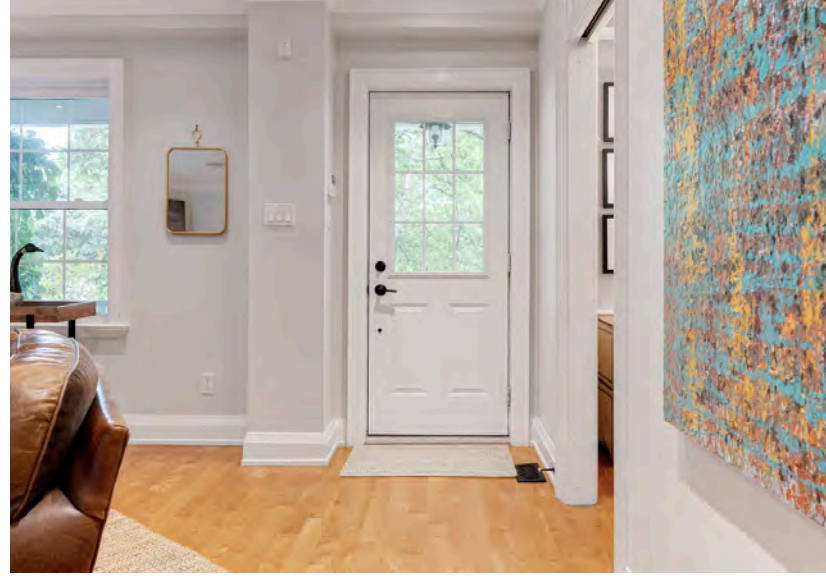
938 Meadow Wood Road

Mississauga, Ontario



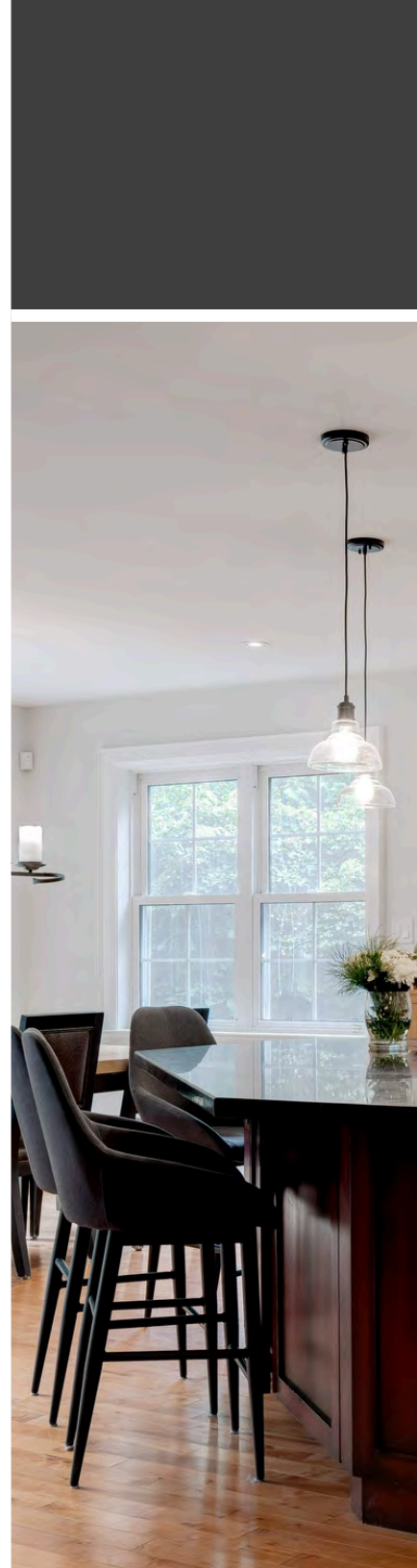
SCHIAVONE
DIAMOND





Welcome
Home





Gather Together



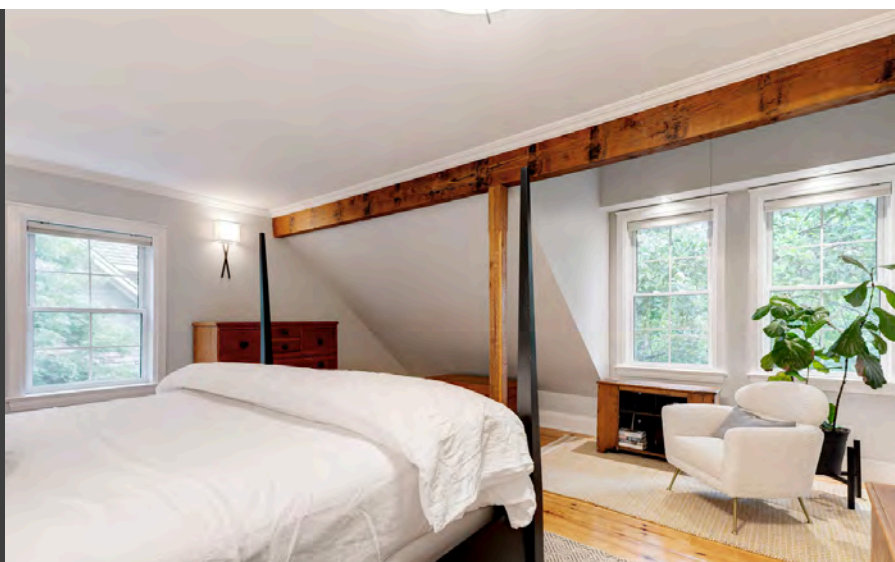
Luxurious Living

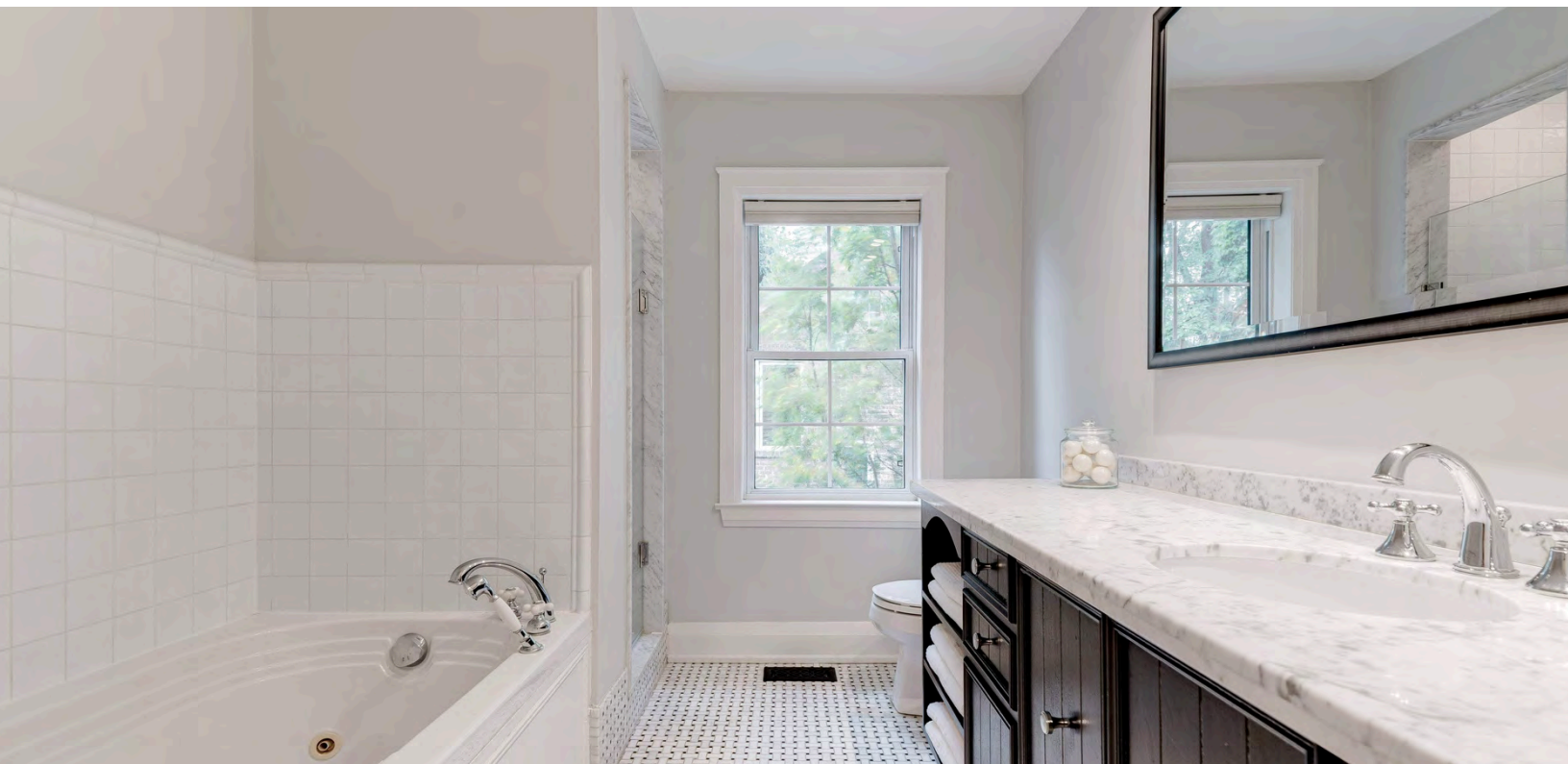






Primary Suite



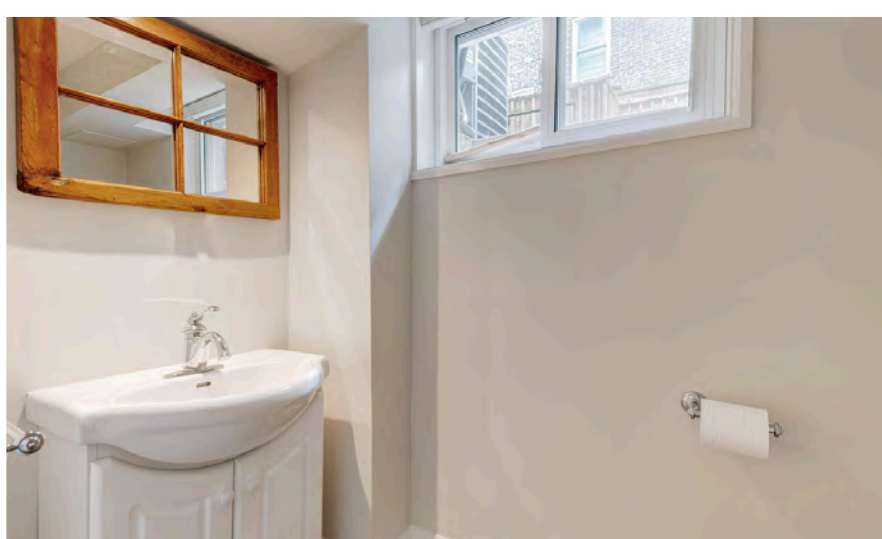
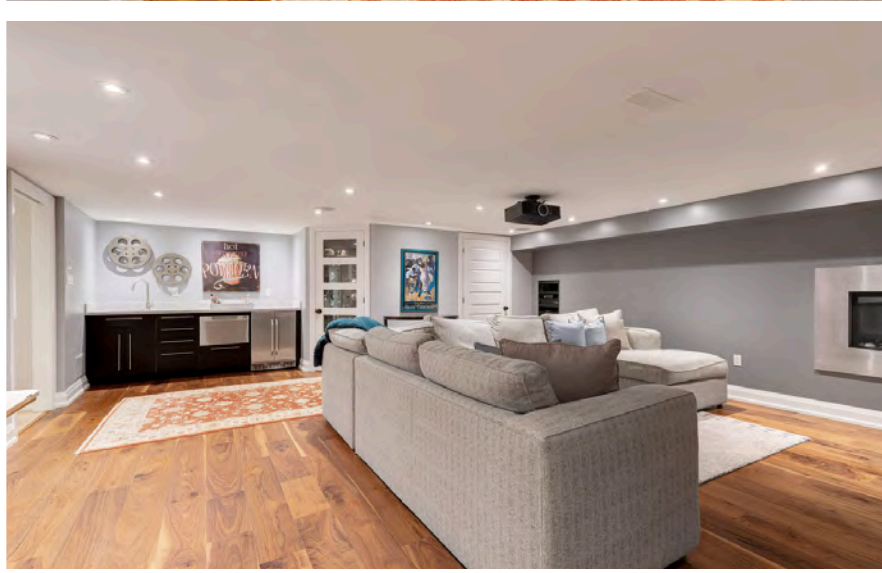






Great for Entertaining!





Floor Plans

938 Meadow Wood Rd, Mississauga, ON

Main Floor Exterior Area 1746.68 sq ft
Interior Area 1592.57 sq ft



0 4 8 ft

PREPARED: 2024/08/30

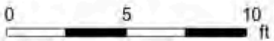


White regions are excluded from total floor area in iGUIDE floor plans. All room dimensions and floor areas must be considered approximate and are subject to independent verification.

Floor Plans

938 Meadow Wood Rd, Mississauga, ON

2nd Floor Exterior Area 1607.13 sq ft
Interior Area 1465.42 sq ft
Excluded Area 85.32 sq ft



PREPARED: 2024/08/30



White regions are excluded from total floor area in iGUIDE floor plans. All room dimensions and floor areas must be considered approximate and are subject to independent verification.

Floor Plans

938 Meadow Wood Rd, Mississauga, ON

Basement (Below Grade) Exterior Area 978.74 sq ft
Interior Area 856.22 sq ft
Excluded Area 368.19 sq ft



White regions are excluded from total floor area in iGUIDE floor plans. All room dimensions and floor areas must be considered approximate and are subject to independent verification.

Features

MAIN LEVEL

Entry

Single door entry, crown moulding, hardwood floor, hardwood stairs with broadloom runner, pot lights

Family Room 18'8 x 16'10

Hardwood floor, corner wood-burning fireplace with granite hearth & surround and white mantle, crown moulding, pot lights, window with front yard view, bay window with side yard view

Kitchen 13'3 x 13'2

Hardwood floor, white shaker style cabinets with stainless steel bar hardware, centre island with breakfast bar, granite counters and slab backsplash, under cabinet lighting, undermounted double stainless steel sink with chrome pull-down faucet, Frigidaire stainless steel fridge, Wolf stainless steel 6-burner stove, stainless steel Broan hood vent, LG stainless steel built-in dishwasher, Panasonic stainless steel built-in microwave, SubZero wine fridge, crown moulding, pot lights, 3 pendant lights above island

Dining/Breakfast Area 13'3 x 9'10

Hardwood floor, pot lights, wrought iron linear chandelier, 2 windows with backyard view, sliding patio doors with transom window above leads to back yard

Living Room 23'2 x 13'7

Hardwood floor, gas fireplace with marble hearth & surround, built-in bookshelf and audio system component display, crown moulding, pot lights, large window with rear yard view

All Season Room 19'10 x 9'8

Pocket door entry with transom window, heated slate tile floor, custom individual stone stacked accent wall, natural gas fireplace, pot lights, wall-to-wall windows with sliding glass doors leading to back yard

Office 12'7 x 11'0

Pocket door entry with transom window, hardwood floor, built-in desk, cabinets and bookshelves, wainscoting, crown moulding, pot lights, window with front yard view, bay window seat with storage and side yard view

2pc Bath

Heated slate tile floor, antique washstand with vessel sink, oiled bronze wall-mounted faucet, framed mirror, Toto toilet, crown moulding, pendant light fixture, pot light, +transom window above door, window with silhouette blind

Mudroom

Pocket door entry with transom window, heated slate tile floor, side entrance from driveway, custom built-in cabinetry and 2 bench seats, undermounted sink with chrome pull-out faucet and granite counter, drum light fixture

Bedroom Level

Primary Bedroom 17'2 x 16'11

Hardwood floor, exposed wood beam, His & Hers walk-in closets with built-in organizers and cabinetry, sitting area with cathedral ceiling, ceiling fan, crown moulding, drum light fixture, window with silhouette blind overlooking side yard, 2 windows with silhouette blinds overlooking front yard

4pc Ensuite Bath

Basket weave marble tile floor, wood vanity with marble counter, undermounted sink with chrome faucet and fixtures, framed mirror, large jetted bathtub with tile surround, separate glass shower with tile surround, pot lights, window with silhouette blind overlooking side yard

Upper Hallway

Cathedral ceiling with 2 skylight windows, custom built-in bookshelves with rolling library ladder, 9'1 x 7'7 alcove can be utilized as office space, study, playroom or tv room, coach style lantern, pot lights

938 Meadow Wood Road

2nd Bedroom 15'11 x 13'3

Engineered hardwood floor, walk-in closet with custom built-ins, crown moulding, drum light fixture, 2 windows with silhouette blinds overlooking back and side yards

3rd Bedroom 15'11 x 13'3

Engineered hardwood floor, 2 closets with built-in organizers, step down ladder up to functional attic storage, 2 windows with silhouette blinds overlooking side and back yards

4pc Bath

Travertine marble tile floor, double vanity with granite counter, 2 undermounted sinks with chrome faucets, separate glass shower with rainfall shower head and travertine tile surround, Toto toilet, pot lights, window with frosted glass overlooking side yard

Laundry Room 8'9 x 7'4

Travertine tile floor, cabinet with sink and faucet, tiled countertop, Whirlpool Duet front loading washer and dryer, pot lights, window overlooking side yard

Third Level

26'11 x 12'9 large loft space with dormer windows, sloped ceilings, berber broadloom, track lighting, 4 windows overlooking front and side yards

Lower Level

Separate side entrance with heated slate tile floor, leads to garbage corral and dog run

Recreation Room 25'5 x 20'5

Pocket door entry, heated engineered hardwood floor, wet bar with espresso cabinets and granite counter, undermounted stainless steel bar sink with pull-down faucet, Fisher & Paykel built-in stainless steel dishwasher drawer, built-in double door stainless steel bar fridge, built-in speakers, screen (55" x 93") and projector, pot lights

Wine Cellar

Dark stained wood panelled walls, slate tile floor, climate controlled, pot lights,

Gym 12'4 x 12'2

Rubberized floor tiles, laundry sink and faucet, window

2pc Bath

Heated slate tile floor, white vanity with integrated sink and chrome faucet, Toto toilet, pot light, window with silhouette blind

Storage closets

Storage/Utility Room 26'0 x 13'2
Adjustable wire shelving

EXTERIOR & ADDITIONAL FEATURES

Fabulous Arts & Crafts style home with Cape Cod Finished wood siding, gutter caps and large wood sitting porch, single driveway with room for 4 cars, interlock stone walkway, landscaped with mature trees and beautiful perennials

Amazing backyard with flagstone patio, natural granite stone accents throughout yard and gardens, in-ground pool, built-in wood bench seating, covered outdoor kitchen includes Crown Verity stainless steel BBQ, 2 bar fridges, beer tap and stainless steel integrated sink and countertop, heater, bracketing gardens include Japanese maples, hydrangeas, spirea, sweet woodruff, hostas and more, in-ground sprinkler

SCHOOL INFORMATION

Public

Owenwood Elementary (K1- Gr 5)

930 Owenwood Drive 905-822-0311

Riverside Elementary (Fr. Imm. Gr 1 – 5)

30 John Street N. 905-274-1515

Green Glade Senior (Gr 6-8) (Ex. French)

1550 Green Glade 905-822-8386

Hillcrest Middle (French Imm. Gr 6 - 8)

1520 Springwell Avenue 905-822-1657

Clarkson Secondary (Gr 9 – 12) (French Imm.)

2524 Bromsgrove Road 905-822-6700

Lorne Park Secondary (Ex. French Gr. 9 – 12)

1324 Lorne Park Road 905-278-6177

Catholic

St. Christopher Elementary (JK – Gr 8) (Ex. French Gr 5 - 8)

1195 Clarkson Road 905-822-0721

St Margaret of Scotland Elementary (French Imm. Gr 5-8)

2266 Council Ring Road 905-820-5115

Iona Secondary School (Gr 9 - 12)

2170 South Sheridan Way 905-823-0136

Loyola Secondary (Ex. French/French Imm. Gr 9 – 12)

4010 Sladeview Crescent 905-820-9822



Backyard Retreat











For more information & pictures visit:
SchiavoneDiamond.com



Bill Schiavone

Broker

Tel 905.338.3737

Cell 416.999.6084

Fax 905.338.7351

Bill@SchiavoneDiamond.com



Steve Diamond

Sales Representative

Tel 905.338.3737

Cell 416.566.9496

Fax 905.338.7351

Steve@SchiavoneDiamond.com