

167 Cairncroft Road Oakville, Ontario



SCHIAVONE
DIAMOND





Welcome Home





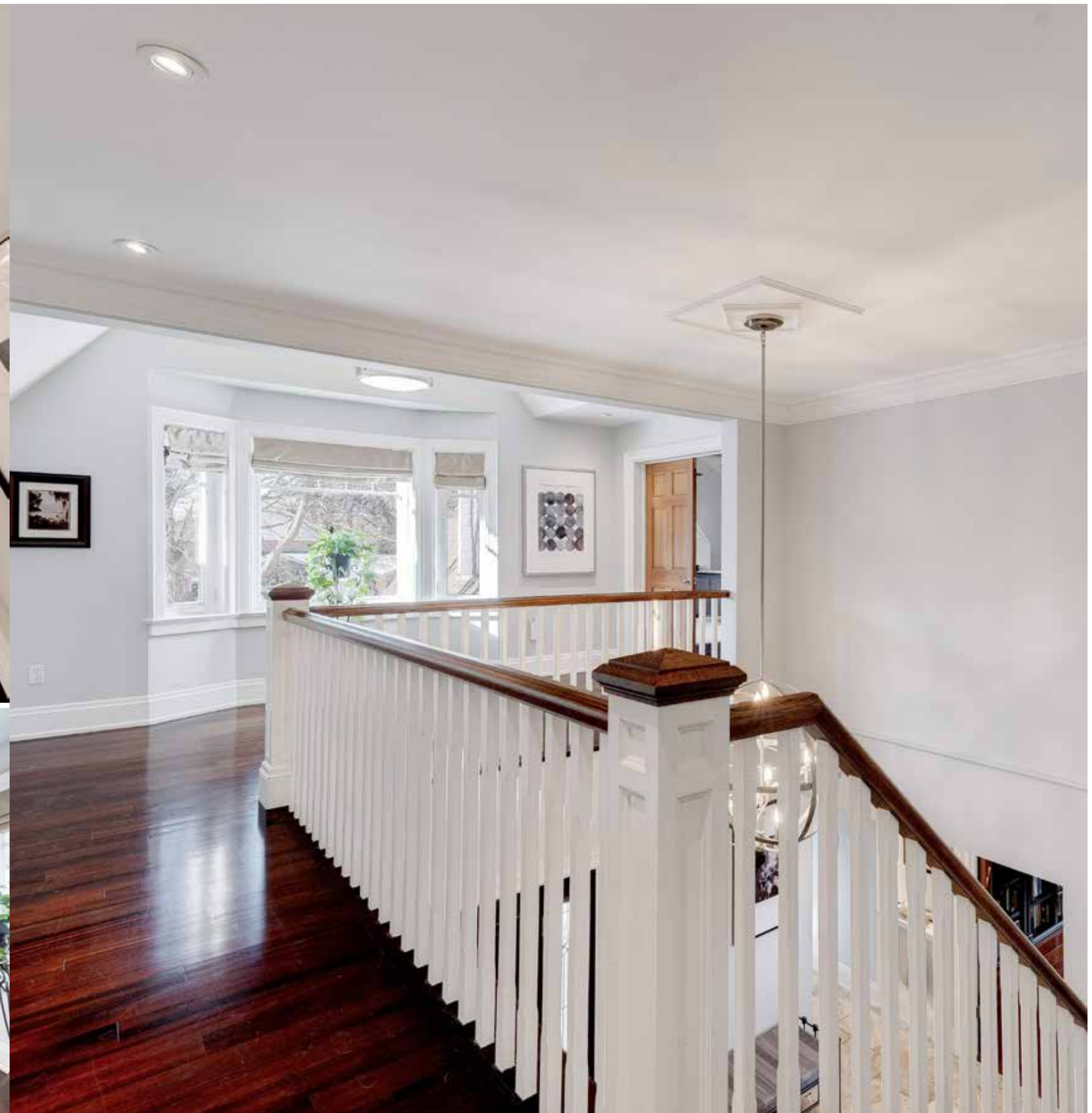
Gather Together





Luxurious Living

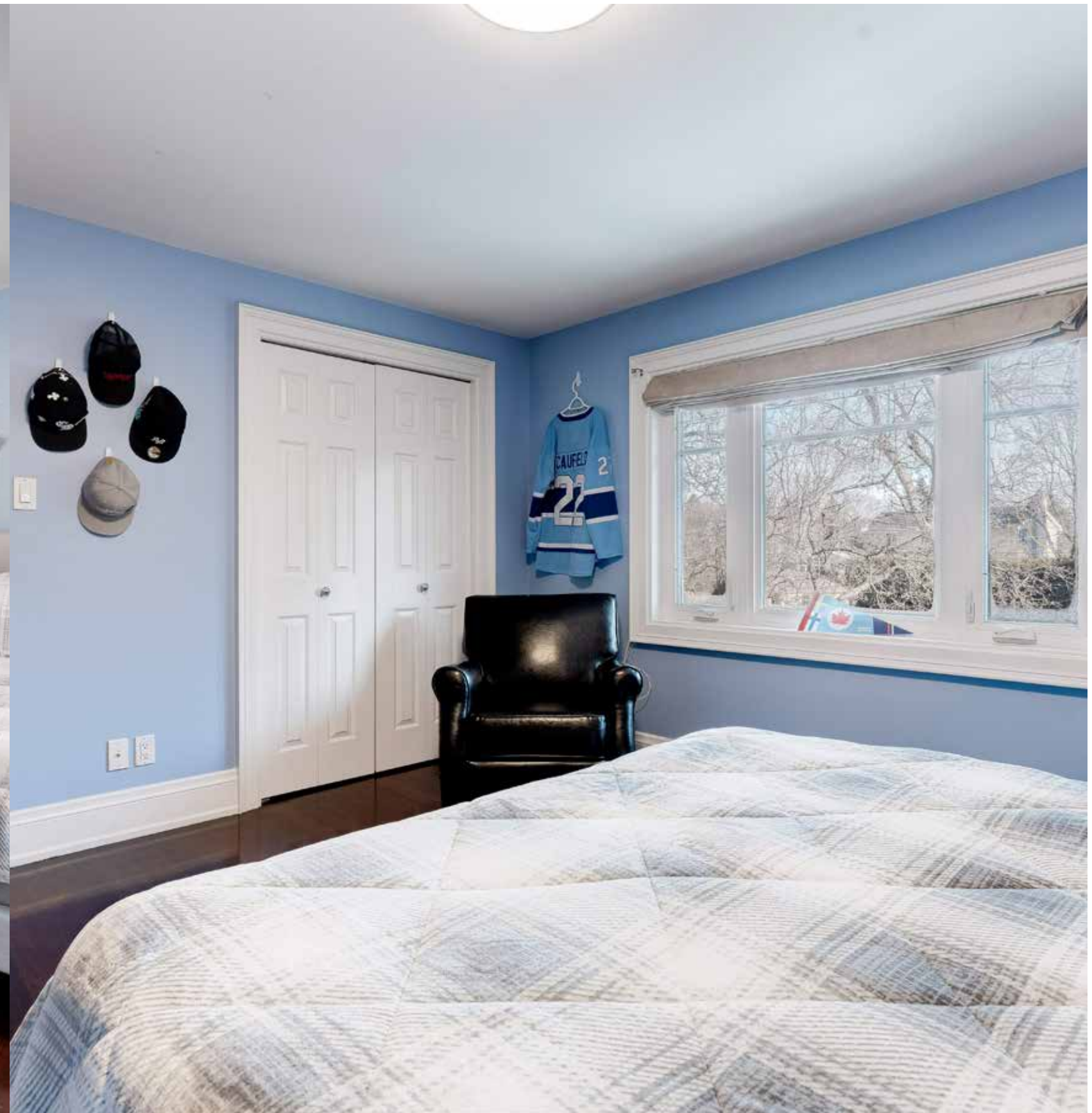
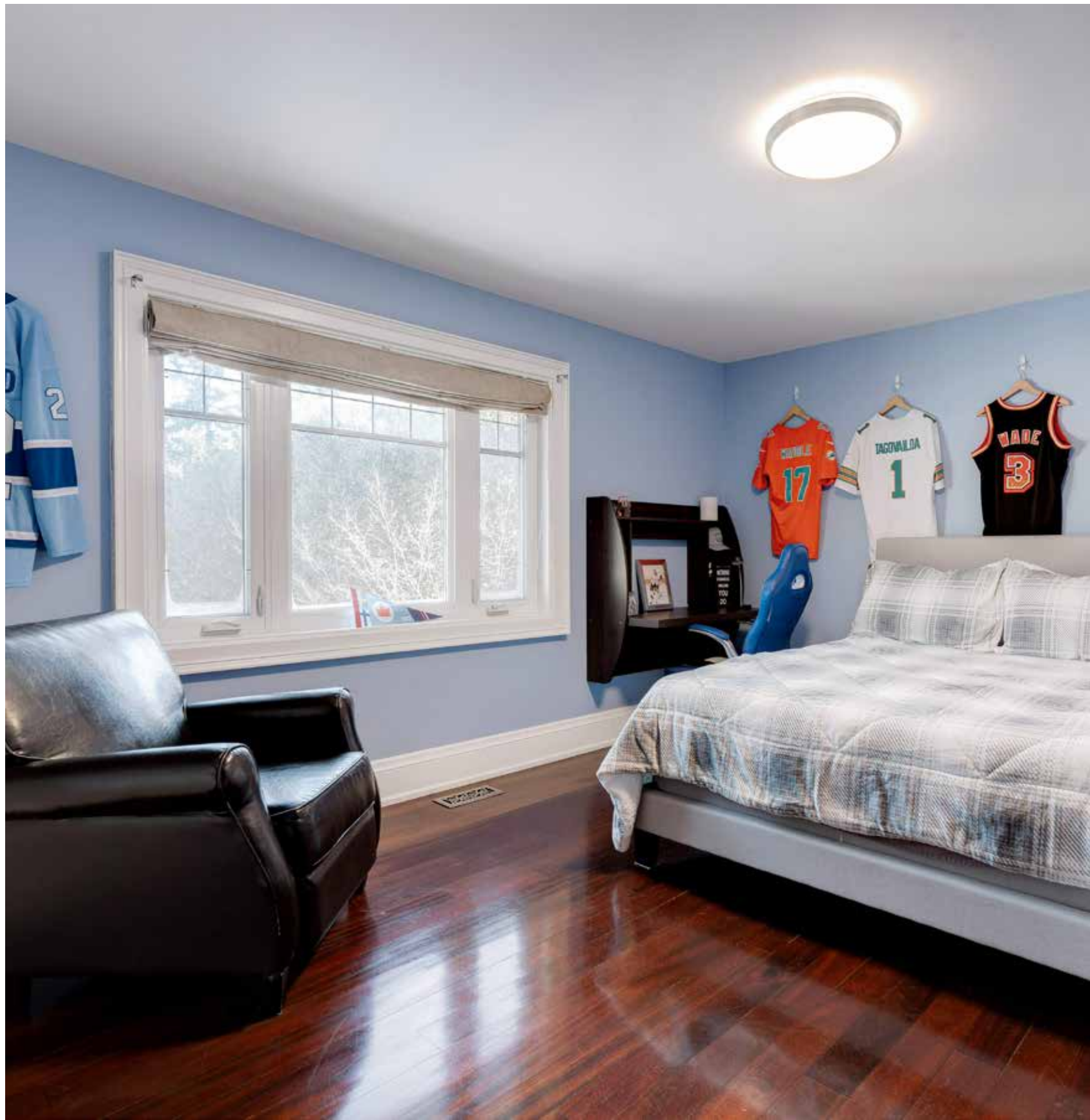




Upper
Level

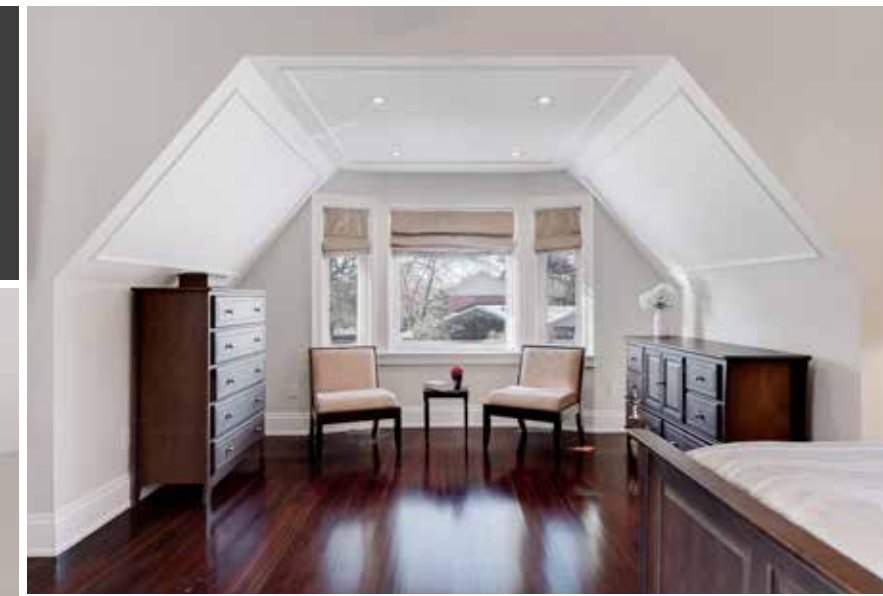








Primary Bedroom



Great for Entertaining!





Floor Plans

167 Cairncroft Road



* Floor plans may not be exactly as shown

Features

167 Cairncroft Road

MAIN LEVEL

Foyer 15'2 x 9'5

Solid mahogany wood door with sidelights, open to second level, travertine tile floor, double mirrored sliding door closet with custom built-ins, crown moulding, large orb chandelier, art niches with lighting, hardwood stairs with white balusters and broadloom runner

Living Room 16'5 x 13'11

Pocket door entry, coffered ceiling, hardwood floor, open gas fireplace with limestone mantle, crown moulding, pot lights, window with drapes & rod and front yard view

Dining Room 16'9 x 13'5

Hardwood floor, crown moulding, linear chandelier with crystals, bay window with rear yard view

Kitchen 20'11 x 17'8

Travertine tile floors, custom white cabinets, quartz countertops with full slab quartz backsplash, double stainless steel undermounted sink with brushed stainless steel pull-down faucet, under-cabinet lighting, large centre island with breakfast bar, wine storage and stainless steel undermounted prep sink with brushed stainless steel pull-down faucet, custom hood vent, KitchenAid stainless steel fridge and built-in wall oven, Panasonic stainless steel built-in microwave, Capital stainless steel 6-burner gas stove, Bosch built-in stainless steel dishwasher, separate servery/coffee bar area with matching cabinetry, glass front cabinets and built-in stainless steel beverage fridge, crown moulding, pot lights, 2 pendant lights above island, linear chandelier, sink window and picture window with roman blinds and rear yard view, garden door with roman blind to rear patio

Great Room 20'10 x 19'4

20' vaulted ceiling with exposed wood beam, hardwood floor, gas fireplace with field stone surround, reclaimed wood mantle and barnwood accent with 2 windows flanking fireplace, custom built-in media cabinetry and bookshelves with lighting, 2 large black iron drum light pendants, floor-to-ceiling windows and double garden doors with roman blinds to rear patio

Office 15'2 x 10'11

Double French door entry, coffered ceiling, hardwood floor, crown moulding, pot lights, window with roman blind and side yard view

2pc Bath

Travertine tile, pedestal sink with chrome faucet and fixtures, storage cabinet, frosted window with front yard view

Mudroom/Laundry 19'1 x 8'11

Travertine tile floor, custom built-in cabinets with bench seats and lockers, Samsung front loading washer, LG dryer, quartz countertop with undermounted stainless steel laundry sink and faucet, glass mosaic tile backsplash, inside entry from garage and separate entry from front porch, crown moulding, pot lights, window with custom shade and side yard view

BEDROOM LEVEL

Upper Hall 15'2 x 8'5

Vaulted ceiling with exposed wood beam, overlooks main floor foyer, hardwood floor, double door linen closet, 2nd linen closet, crown moulding, pot lights, pendant light, bay window with roman blinds overlooking front yard

Primary Bedroom 23' x 17'2

Double door entry, vaulted ceiling with exposed wood beam, hardwood floor, alcove sitting area, walk-in closet with custom built-ins, 2 ceiling fans, pot lights, linen closet, bay window with roman blinds overlooking front yard, 2 windows with roman blinds overlooking side and front yards

6pc Ensuite Bath

Vaulted ceiling with exposed wood beam, travertine tile, cream vanity with quartz counter, double undermounted sinks with chrome faucets, bidet, soaker tub with tile surround, separate large glass shower with tile surround, pot lights, pendant light, window overlooking side yard

2nd Bedroom 12'10 x 11'9

Hardwood floor, bifold door closet, window with roman blind overlooking rear yard

3rd Bedroom 13'10 x 11'11

Hardwood floor, double bifold door closet, built-in desk, window with roman blind overlooking rear yard

4th Bedroom 17'6 x 13'1

Hardwood floor, walk-in closet with custom built-ins, window with roman blinds overlooking front yard

3pc Ensuite Bath

Travertine tile, pedestal sink with chrome faucet and fixtures, separate large glass shower with tile surround

4pc Main Bath

Travertine tile, cream vanity with quartz counter, undermounted sink with chrome faucet and fixtures,

tub/shower combination with tile surround, window with roman blind overlooking rear yard

LOWER LEVEL

Recreation Room/Games Room 20'3 x 18'8

Double French door entry, engineered hardwood floor, storage closet, crown moulding, pot lights

Recreation Room 18'1 x 13'4

Luxury vinyl plank floor, gas fireplace with ledge rock surround, custom built in media cabinets and shelves, crown moulding, pot lights

Recreation Room 20'1 x 15'0

Heated hardwood floor, custom built-in table

Gym 13'10 x 10'2

Engineered hardwood floor, storage closet, crown moulding, pot lights

5th Bedroom 14'8 x 9'9

Engineered hardwood floor, pot lights, egress window with drapes & rod

3pc Bath

Tile floor, wood vanity with integrated sink & counter, oiled bronze faucet, framed mirror, separate glass shower with tile surround

Utility/Storage Room 25'1 x 10'10

Laundry sink, fridge, upright freezer, workshop area

Features

167 Cairncroft Road

EXTERIOR & ADDITIONAL FEATURES

Custom, complete renovation in 2008 with beautiful Cape Cod exterior with James Hardi cement siding and square cut Owen Sound stone, copper roof accents, professionally landscaped with mature trees and perennials, 2 car garage with mahogany door, double driveway fits 4 cars, aggregate stone walkway and extensive front porch with gabled sitting area, armour stone accents

Gorgeous backyard oasis with Award Winning Solda in-ground pool with patterned concrete patio, garden beds with armour stone accents and wrought iron safety fence, cabana/pool house with 2pc bathroom, bar and equipment room, custom wood pergola, separate garden shed, metal gazebo, professionally landscaped with mature trees, shrubs and perennials

- Over 5000 sq ft of finished living space on 3 levels
- Huge 103' x 200' lot in sought-after SouthEast Oakville
- 40 year roof shingles
- French Cobblestone travertine tile flooring in varying sizes throughout
- Pringa hardwood on main level and Andiroba Vintage hardwood on second level
- Next Generation wiring throughout
- Solid mahogany interior doors, 8" baseboards and 4.5" casement trim
- Central vacuum
- 2 exterior water taps, one with hot & cold
- Sprinkler system through gardens and yards
- Top of the line Carrier Infinity furnace (2021)
- UV air filter
- 75 gallon water heater (rental)

LOT SIZE: 103' X 200'

2024 TAXES: \$18,765

SCHOOL INFORMATION

Public

New Central Elementary (JK - Gr 6)

133 Balsam Drive 905-844-3081

E.J. James Elementary (Fr. Imm. Gr 2 - 8)

338 Cairncroft Road 905-845-2015

Maple Grove Elementary (Gr 7 - 8)

288 Maple Grove Drive 905-844-9322

Oakville Trafalgar Secondary (Gr 9-12) (Fr. Immersion)

1460 Devon Road 905-845-2875

Catholic

St. Vincent Elementary (JK - Gr 8)

1280 Braeside Drive 905-849-0777

St. Marguerite d'Youville Elementary (Fr. Imm Gr 1-4)

1359 Bayshire Drive 905-849-7772

St. Mary Elementary (Fr. Imm Gr 5-8)

2145 Upper Middle Road 905-336-3911

St. Thomas Aquinas Secondary (Gr 9-12)

124 Dorval Drive 905-842-9494

St. Ingatius of Loyola Secondary (Fr. Imm Gr 9-12)

1550 Nottinghill Gate 905-847-0595

Backyard Retreat





For more information & pictures visit:
SchiavoneDiamond.com



Bill Schiavone

Broker

Tel 905.338.3737

Cell 416.999.6084

Fax 905.338.7351

Bill@SchiavoneDiamond.com



Steve Diamond

Sales Representative

Tel 905.338.3737

Cell 416.566.9496

Fax 905.338.7351

Steve@SchiavoneDiamond.com

ALL information contained herein has been supplied by the Seller to the best of their knowledge and while deemed accurate is **NOT** guaranteed by Royal LePage Real Estate Services Ltd., Brokerage. ALL measurements are approximate.