

SCHIAVONE DIAMOND



For more information & pictures visit:
SchiavoneDiamond.com



Bill Schiavone
Broker

Tel 905.338.3737

Cell 416.999.6084

Fax 905.338.7351

Bill@SchiavoneDiamond.com



Todd Pilatzke
Sales Representative

Tel 905.338.3737

Cell 905.330.5652

Fax 905.338.7351

Todd@SchiavoneDiamond.com

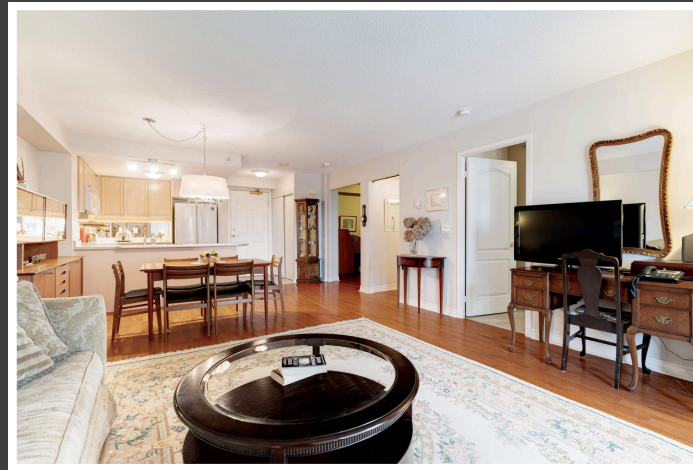
ALL information contained herein has been supplied by the Seller to the best of his knowledge and while deemed accurate is NOT guaranteed by Royal LePage Real Estate Services Ltd., Brokerage. ALL measurements are approximate

SCHIAVONE DIAMOND



Welcome to...
#706-350 Princess Royal Drive





Main Level

Entry

Single door entry, tile floor, double sliding door coat closet

Living Room 14'8 x 13'5

Hardwood floor, sliding glass doors to balcony overlooking park

Dining Room 14'8 x 10'0

Hardwood floor, drum light chandelier, open to living room and kitchen

Kitchen 8'3 x 7'10

Tile floor, wood cabinetry, laminate counter, double stainless steel sink with chrome faucet, mirrored backsplash, Samsung fridge, Frigidaire stove, Frigidaire above-the-range built-in microwave, Frigidaire built-in dishwasher, track lighting above peninsula

Bedroom 12'0 x 11'1

Broadloom, wall-to-wall closet with sliding doors and built-in shelving, window and sliding glass doors to balcony overlooking park

Den 12'0 x 8'6

Hardwood floor

3pc Bath

Sliding barn door entry, tile floor, wood vanity with integrated sink and counter, chrome faucet and fixtures, large shower with shelves, bench seat and grab bars, medicine cabinet

In-Suite Laundry

Tile floor, stacked GE washer and dryer

Additional Features & Amenities

- Private, full unit-width balcony with 7th floor city views and overlooking dedicated green space
- Over 800 sqft with 1 bedroom + den, 1 bathroom, 1 underground parking space and 1 storage locker
- Concierge/security
- Social activities including private shuttles, theatre with weekly movie screenings, daily coffee & tea gatherings,
- Building amenities include on-site hair salon, indoor pool, exercise room, putting green, shuffleboard, billiards room, internet café, library, meeting/party room
- Meal plans/tickets may be purchased for use in the dining room of adjacent 380 Princess Royal
- Walk score of 93 – walk to Square One, Living Arts Centre, many restaurants and City Hall
- Unique community atmosphere for active adults

2024 Taxes: \$2,717

Floor Plan

