

SCHIAVONE DIAMOND



For more information & pictures visit:
SchiavoneDiamond.com



Bill Schiavone
Broker

Tel 905.338.3737

Cell 416.999.6084

Fax 905.338.7351

Bill@SchiavoneDiamond.com



Steve Diamond
Sales Representative

Tel 905.338.3737

Cell 416.566.9496

Fax 905.338.7351

Steve@SchiavoneDiamond.com

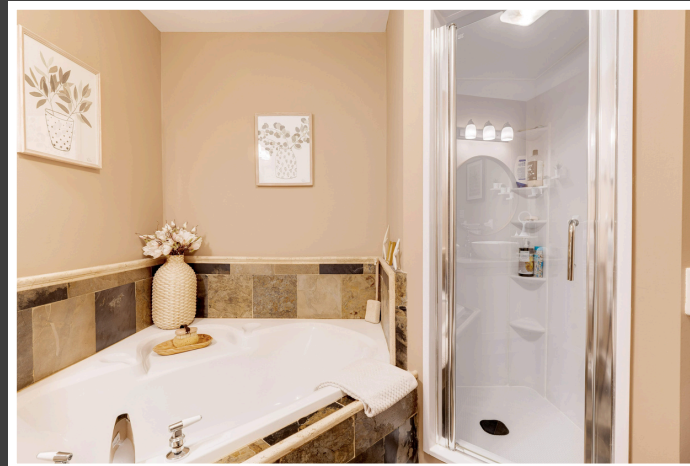
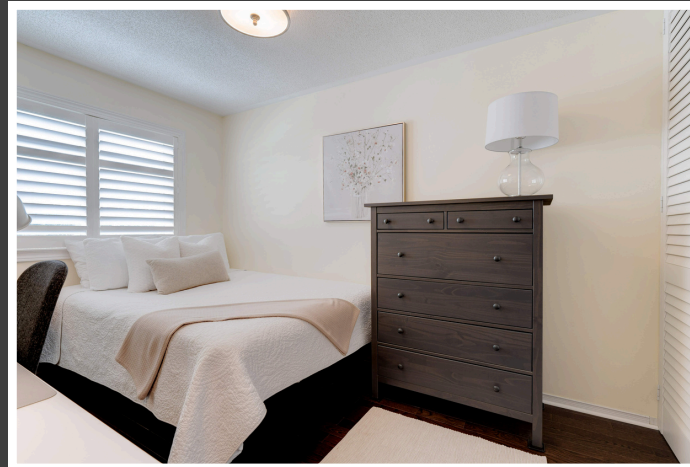
ALL information contained herein has been supplied by the Seller to the best of his knowledge and while deemed accurate is NOT guaranteed by Royal LePage Real Estate Services Ltd., Brokerage. ALL measurements are approximate

SCHIAVONE DIAMOND



Welcome to...
#84-2350 Grand Ravine Drive





Main Level

Foyer

Single door entry, side window with shutters, travertine tile floor, coat closet, inside entry from garage, hardwood stairs with white risers & balusters, drum light

Living Room 16'4 x 12'7

Hardwood floor, drum light fixture

Kitchen 13'10 x 8'9

Travertine tile floor, refaced white shaker-style cabinets with oiled bronze bar hardware, glass fronts and pantry cabinets, granite counters, undermounted stainless steel double sink, brushed stainless steel pull-down faucet, tumbled marble tile backsplash, Frigidaire stainless steel fridge, KitchenAid stainless steel smooth-top stove, KitchenAid low-profile stainless steel over-the-range microwave, Bosch stainless steel built-in dishwasher, pot lights, sliding glass patio doors with shutters to rear patio

Dining Area 10'7 x 9'3

Hardwood floor, corner natural gas fireplace, window with shutters and rear yard view

2pc Bath

Tile floor, grey vanity with granite counter, brushed stainless steel faucet & fixtures, framed mirror

Basement

Rec Room 22'8 x 11'10

Berber broadloom, under stairs storage

Den 12'5 x 7'3

Double French door entry, berber broadloom

Laundry Room/Storage 12'2 x 8'9

LG front loading washer & dryer, laundry sink with faucet

Second Level

Primary Bedroom 23'6 x 18'

Hardwood floor, walk-in closet with custom built-ins, bay window with shutters overlooking front yard, ceiling fan, sitting area has 2 windows with shutters overlooking front yard

4pc Ensuite Bath

Slate tile floor, white vanity with laminate counter and vessel sink, chrome faucet, framed mirror, corner soaker tub with slate tile surround, separate corner glass shower

2nd Bedroom 12'2 x 8'8

Hardwood floor, double door closet, drum light, window with shutters overlooking rear yard

3rd Bedroom 9'7 x 9'0

Hardwood floor, double door closet, drum light, window with shutters overlooking rear yard

4pc Bath

Tile floor, white vanity with laminate counter, brushed stainless steel faucet, tub/shower combination with tile surround

Exterior & Additional Features

Brick exterior, single car garage with loft storage and inside entry, single driveway

Fully fenced rear yard, new fencing (2022), interlock stone patio, private setting backing on to parkette with no direct neighbours behind

- Well-maintained with updates including 2pc bath, hardwood flooring, kitchen refacing, light fixtures
- Beautiful hardwood floors throughout living room, dining room and second level
- Upper hallway linen closet
- Neutral colours throughout

School Information

Public

Post's Corners Elementary (JK - Gr 8)
2220 Caldwell Drive 905-845-1661

Palermo Elementary (SK - Gr 8)
561 Valleyridge Drive 905-469-1138

Sunningdale Elementary (Fr Immersion Gr 2 - 8)
1434 Oxford Avenue 905-844-9941

White Oaks Secondary (Gr 9 - 12) (Fr Imm.)
1330 Montclair Drive 905-845-5200

2024 Taxes: \$3,430

Catholic

St Andrew Elementary (JK - Gr 8)
145 Millbank Drive 905-257-7102

St. Marguerite d'Youville Elementary (Fr. Imm Gr 1 - 4)
1359 Bayshire Drive 905-849-7772

St Mary Elementary (Fr. Imm Gr 5 - 8)
2145 Upper Middle Road 905-336-3911

Holy Trinity Secondary (Gr 9 - 12)
2420 Sixth Line 905-257-3534

St. Ignatius of Loyola Secondary (Fr. Imm Gr 9 - 12)
1550 Nottinghill Gate 905-847-0595