

SCHIAVONE
DIAMOND



For more information & pictures visit:
SchiavoneDiamond.com



Bill Schiavone
Broker

Tel 905.338.3737

Cell 416.999.6084

Fax 905.338.7351

Bill@SchiavoneDiamond.com



Steve Diamond
Sales Representative

Tel 905.338.3737

Cell 416.566.9496

Fax 905.338.7351

Steve@SchiavoneDiamond.com

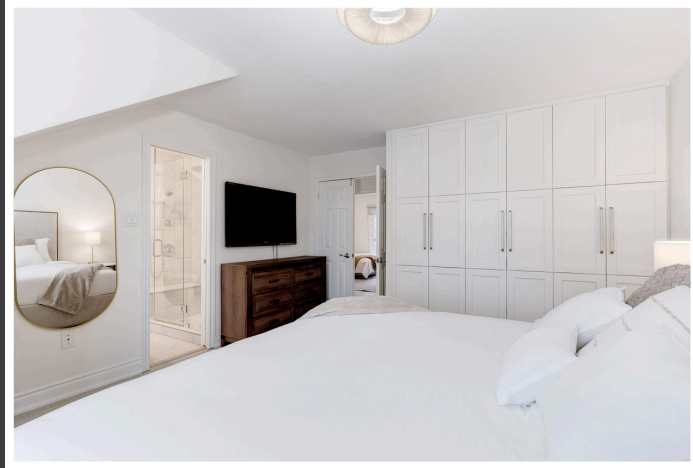
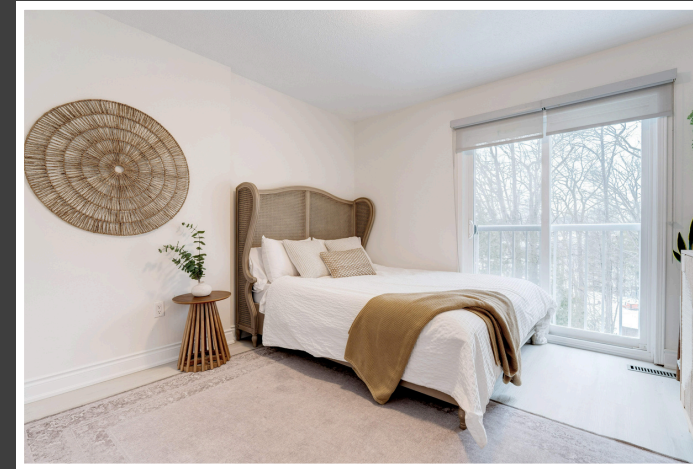
ALL information contained herein has been supplied by the Seller to the best of his knowledge and while deemed accurate is NOT guaranteed by
Royal LePage Real Estate Services Ltd., Brokerage. ALL measurements are approximate

SCHIAVONE
DIAMOND



Welcome to...
#213-2110 Cleaver Avenue





Main Level

Living Room 22'1 x 12'11

Corner natural gas fireplace with painted brick surround and wood mantle, laminate floor, sliding glass doors to rear balcony/patio overlooking wooded area, window overlooking rear yard

Kitchen 11'11 x 9'7

Renovated in 2023 with white shaker-style cabinets and stainless steel bar hardware motion sensor under-cabinet lighting, Caesarstone quartz counters and breakfast bar, artisan white glossy subway tile backsplash, oversized single stainless steel sink with pull-down faucet and water purifier, Frigidaire stainless steel gas stove, Frigidaire stainless steel fridge, Frigidaire stainless steel built-in dishwasher

Dining 9'5 x 6'11

Laminate floor, orb chandelier, large window overlooking front yard

2pc Bath

Laminate floor, white vanity with marble counter, undermounted sink, chrome faucet and fixtures, round mirror

Hallway

Coat closet, window with custom blind overlooking front yard, stairs to upper level with broadloom

Bedroom Level

Primary Bedroom 15'3 x 13'0

Double door entry, luxury vinyl plank floor, custom wall-to-wall closets, jute light fixture, Palladian window with drapes and rod overlooking front yard

3pc Ensuite Bath

Porcelain tile floor, grey vanity with integrated sink and counter, chrome faucet and fixtures, round mirror, large glass shower with bench seat, shampoo niche, rainfall shower head and tile surround, window with custom blind overlooking front yard

2nd Bedroom 10'10 x 8'4

Luxury vinyl plank floor, custom wall-to-wall closets, window with drapes & rod overlooking rear yard

3rd Bedroom 10'9 x 11'0

Luxury vinyl plank floor, custom wall-to-wall closets, sliding glass doors to Juliette balcony with custom blinds overlooking rear yard

4pc Main Bath

Newly renovated with luxury vinyl plank floor, white vanity with quartz counter and undermounted sink, chrome faucet, tub/shower combination with tile surround

Laundry

Maytag Epic Z front-loading washer and dryer, storage shelf

2025 Taxes: \$3,197

Lot Size: 63' x 109.67'

Exterior & Additional Features

Stacked townhouse, brick exterior, overlooks wooded/treed lot

- Kitchen renovation in 2023 (25 year warranty on Ikea cabinet frames, drawers, hinges & legs)
- Main bath and 2pc bath update in 2025
- Freshly painted throughout in 'dove white'
- Luxury vinyl plank flooring throughout upper level in 2023
- Detached single car garage with driveway parking space – easily accessed from unit
- Custom closets in bedrooms 2025
- Boonstra furnace and AC 2022 (5 year transferable warranty)
- Condo fees include garbage removal, snow removal, landscaping, irrigation and building insurance
- Furnace and Sensi WiFi thermostat

School Information

Public

C.H. Norton Elementary (JK – Gr 8)
2120 Cleaver Avenue 905-332-3897

Clarksdale Elementary (Fr. Imm. Gr 2 – 6)
2399 Mountainside Drive 905-335-5605

M. M. Robinson Secondary (Gr 9 – 12) (Fr. Imm.)
2425 Upper Middle Road 905-335-5588

Rolling Meadows Elementary (Fr. Imm. Gr 7 – 8)
1522 Mountain Grove Avenue 905-332-6000

Catholic

St. Timothy Elementary (JK – Gr 8)
2141 Deer Run Avenue 905-332-5253

Sacred Heart of Jesus Elementary (Fr. Imm. Gr 5 – 8)
2222 Country Club Drive 905-331-4656

Notre Dame Secondary (Fr. Imm. Gr 9 – 12)
2333 Headon Forest Drive 905-335-1544